

EMINENT



MANUAL

EM8100/EM8102 – WEB TV Box with HD Media Player

WWW.EMINENT-ONLINE.COM

EM8100/EM8102 – WEB TV Box with HD Media Player

Table of contents

1.0 Introduction	3
1.1 Functions and features	3
1.2 Packing contents	4
2.0 Explanation of the remote control	5
3.0 Explanation of the connections	6
3.1 Explanation of the connections (EM8100).....	6
3.2 Explanation of the connections (EM8102).....	6
4.0 Mounting a SATA hard disk (EM8102 only)	7
5.0 Connecting the EM8100/EM8102	7
6.0 Setting up the EM8100/EM8102 (Automatic)	8
6.1 Using the wizard (Initial setup).....	8
7.0 Setting up the EM8100/EM8102 (Manually).....	8
7.1 Formatting the internal hard disk (EM8102 only).....	9
7.2 Setting up the screen.....	9
7.3 Setting up sound.....	9
If connected directly to your television:	9
If connected to a HDMI DTS receiver:	10
If connected to a DTS receiver using the coaxial or optical connection:	10
7.4 Setting up the network.....	10
7.4.1 Wired connection-Automatically using DHCP	10
7.4.2 Wired connection-Manually.....	11
7.4.3 Wireless connection.....	11
7.4.4 Enabling the Samba server.....	12
8.0 Copying media to a connected USB device or copy media to the internal hard disk (EM8102 only)	12
8.1 Using the File Manager.....	12
8.2 Using the network connection (Samba)	13
9.0 Playing Media.....	14
9.1 Blu-Ray ISO	14
9.2 DVD playback.....	15
9.2.1 DVD ISO	15
9.2.2 DVD VIDEO_TS	15
9.3 Search and play other video formats	15
9.4 Playing music and other audio files.....	16
9.5 Playing photos and other images.....	16
10.0 Playing media through the network.....	17
10.1 Setting up Windows media player 11 as UPnP server (Windows XP and Vista)	17
10.2 Setting up Windows media player 12 as UPnP server (Windows 7)	18
10.3 Playing media through your network (UPnP)	19

10.4 Playing media through your network (Samba)	19
10.5 Playing media through your network using DLNA DMR	20
11.0 Stream online using the Portal (WEB TV/Radio Apps)	21
11.1 Country selection	21
11.2 Using the web apps	21
11.3 Arranging apps	22
11.4 Using YouTube	22
11.5 Using the Social Connect features	23
12.0 Other functions	23
13.0 Frequently Asked Questions and other related information	24
14.0 Service and support	25
15.0 Warning and points of attention	25
16.0 Warranty conditions	27
17.0 Declaration of Conformity	27

1.0 Introduction

Congratulations with the purchase of this high-quality Eminent product! This product has undergone extensive testing by Eminent's technical experts. Should you experience any problems with this product, you are covered by a five-year Eminent warranty. Please keep this manual and the receipt in a safe place.

Register your product now on www.eminent-online.com and receive product updates!

1.1 Functions and features

Using the EM8100 and EM8102, hundreds of television and radio channels will become available using the internet. Television and radio channels which usually are not available will become within reach. No need for a laptop or computer to watch television or radio: Just connect the EM8100 or EM8102 to your router and television and a whole new world opens up!

The EM8100 and EM8102 are also equipped with online services such as YouTube and others. Social Media is also supported: Facebook and Twitter are available.

The EM8100 and EM8102 are also fully capable media players with support for all common media formats. Blu-Ray files? No problem! Connect a USB hard disk with media content or built-in a SATA hard disk (EM8102 only) and copy media to the hard disk to enjoy your media files in Full HD and digital sound! The EM8100 and EM8102 are also able to play media which is available on other devices such as NAS devices, using the UPnP protocol and Samba protocol.

The EM8100 and EM8102 are also designed for the audio enthusiasts: The EM8100 and EM8102 both provide a complete home cinema experience by using digital sound. The EM8100 and EM8102 both have support for Dolby true-HD and DTS-HD Master

by HDMI 1.3. In case you do not have an external receiver: The EM8100 and EM8102 are also able to downmix HD-audio content.

Do you have photos on a SD card? Then use the built-in card reader (EM8102 only) to enjoy your photos on your HD television using a slideshow.

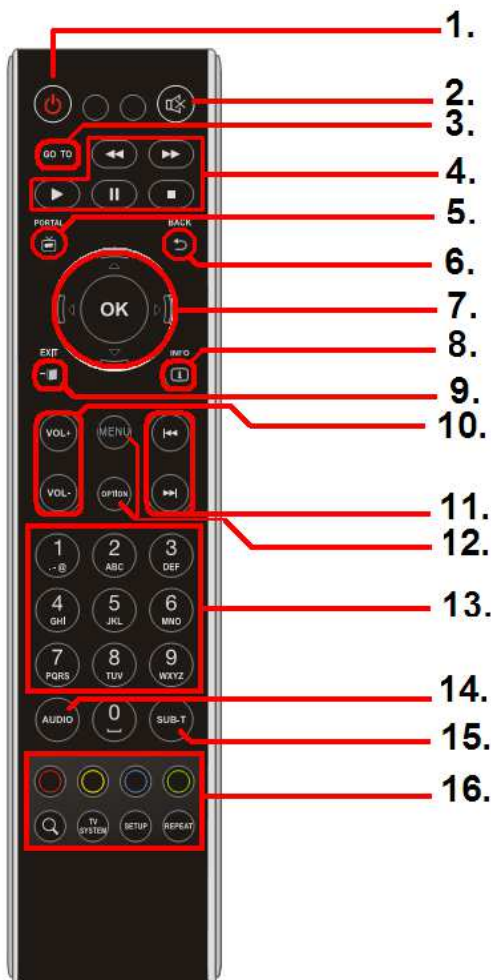
The EM8100 has support for USB 2.0 and has a 100Mbit LAN interface. The EM8102 supports USB 3.0 and has a Gigabit LAN interface.

1.2 Packing contents

The following parts need to be present in the packing:

- EM8100 or EM8102 Web TV box
- Power supply
- Remote control
- Batteries
- HDMI cable
- Optical cable
- USB 3.0 cable (EM8102 only)
- AV cable
- CD-ROM with multilingual manual
- Quick Install Guide

2.0 Explanation of the remote control

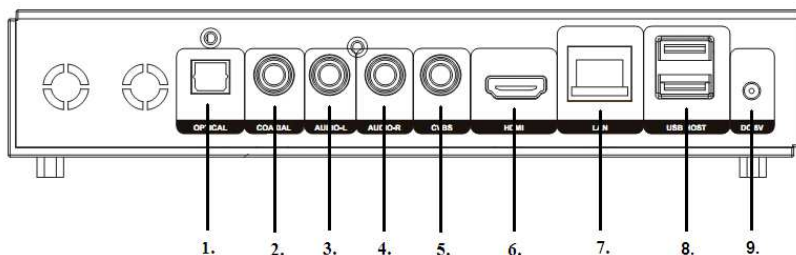


1. **Power button:** Switch the device on/off.
2. **Mute button:** Used to mute the sound.
3. **Go To buttons:** Used to select a specific time frame.
4. **Function buttons:** Used when playing media files.
5. **Portal button:** Used to go to the main page of the portal.
6. **Back button:** Used in Portal view. Go back one step.
7. **Navigation:** Used to navigate through menu's and files.
8. **Info button:** Shown information about the current file.
9. **Exit button:** Used to go back one step.
10. **Volume button:** Used to increase and decrease the sound volume.
11. **Next/Previous button:** Used to select the next or previous chapter or song.
12. **Menu & Option button:** Menu: Used to select the main menu icons.

- Option:** Mainly used to select views.
13. **Numeric buttons:**
 14. **Audio button:** Used to select audio streams.
 15. **Subtitle button:** Used to select the subtitles.
 16. **Functions buttons:** Mainly used during 'File Manager' usage and system functions: 'TV System' is used to select another resolution. 'Zoom' button is used to zoom in while playing media or select full screen with certain web apps.

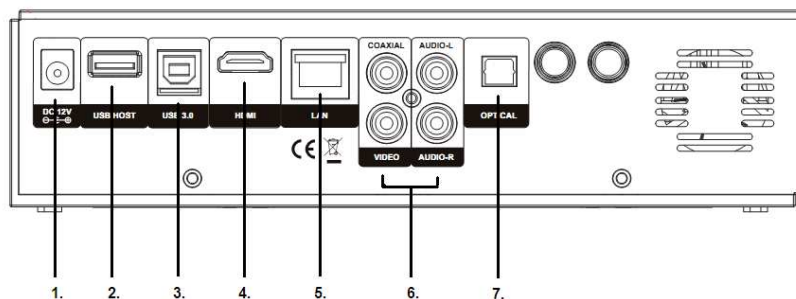
3.0 Explanation of the connections

3.1 Explanation of the connections (EM8100)



1. **Optical connection:** Used to connect a digital SPDIF receiver.
2. **Coaxial connection:** Used to connect a coaxial receiver.
3. **Audio-L:** Used to connect an analog stereo receiver.
4. **Audio-R:** Used to connect an analog stereo receiver.
5. **CVBS:** Use to connect a composite video cable.
6. **HDMI Connection:** Used to connect to your television or HDMI receiver.
7. **LAN connection:** Used to connect to your network (modem, router or switch).
8. **USB Host:** Used to connect USB devices (USB HDD, USB memory stick).
9. **DC 5V:** Used to connect the power supply.

3.2 Explanation of the connections (EM8102)



1. **DC 12Volt:** Used to connect the power supply.
2. **USB Host:** Used to connect USB devices (USB HDD, USB memory stick).
3. **USB 3.0 Client:** Used to connect the TV box to your computer.

- | | |
|-----------------------------------|---|
| 4. HDMI connection: | Used to connect to your television or HDMI receiver. |
| 5. Gigabit LAN: | Used to connect to your (gigabit) network (modem/router/switch). |
| 6. Coaxial/composite/CVBS: | Coaxial used to connect to a digital receiver.
Composite and CVBS connections are used to connect to an older CRT television.
Composite can also be connected to an analog stereo receiver. |
| 7. Optical connection: | Used to connect a digital SPDIF receiver. |

4.0 Mounting a SATA hard disk (EM8102 only)

The following steps describe how to built-in a SATA hard disk. You will need a Philips screw driver when using the following steps.

1. Take the EM8102 out of the packing and turn the unit over in such a way the bottom of the device points to your face.
2. Two white arrows will point to two screws. Unscrew the two screws on the bottom of the media player using the Philips screw driver and lift the lid.
3. Take the SATA hard disk and position the hard disk in such a way the screw holes of the hard disk align with the screw holes on the lid.
4. Use four screws to fix the hard disk to the lid.
5. Connect the SATA cables to the hard disk.
6. Place the lid back and use the Phillips screw driver to screw the lid to the housing.

5.0 Connecting the EM8100/EM8102

1. Connect the HDMI cable to the HDMI connection of the EM8100/EM8102 and connect the other side of the HDMI cable to a free HDMI connection on your television. You can also make use of the composite connection when using an older CRT television.
2. If desired, connect a network cable to the LAN connection of the EM8100/EM8102. Connect the other side of the network cable to your router or switch.
3. Set the television to the corresponding HDMI channel.
4. Connect the cable of the power supply to the power connection of the media player.
5. Connect the power supply to a wall outlet.

In case you want to use a HDMI receiver, you need to connect the HDMI cable to both media player and HDMI receiver.



Attention: If an internal hard disk is mounted in the EM8102, and you have started the EM8102 for the first time, the EM8102 will initialize the hard disk. Initializing the hard disk can take some time. Do not interrupt this initializing procedure! Interrupting this procedure can create errors on the hard disk which will result in a non-working hard disk...

6.0 Setting up the EM8100/EM8102 (Automatic)

6.1 Using the wizard (Initial setup)

The moment the power supply has been connected to a wall outlet, the media player automatically starts. Usually, at first start a wizard will be shown. This wizard can be used to setup the media player.

1. The wizard starts with the menu language. Press the 'OK' button to enter the language selection. In this case, select 'English' and press the 'OK' button.
2. 'Region' is the next item. Select your region. For Example: 'United Kingdom' and press the 'OK' button on the remote control.
3. Then 'Wired LAN Setup' is selected. Press the 'OK' button to enter the selection menu. If the media player has been connected using a network cable, you can select 'DHCP IP (AUTO)' to automatically assign an IP-Address to the media player. Also, select DNS (AUTO). Press the 'OK' button again after which de connection will be tested. Press the 'Exit' button a few times to enter the main menu.
4. If you want to manually set the IP-Address, you need to select 'FIX IP (MANUAL)' and fill out the necessary data. Press the 'OK' button to confirm your input.

Hint: If the wizard does not appear after the first startup, you need to set the media player back to default settings. After this procedure, the wizard will appear. If you do see the wizard: Press the 'Setup' button, and then use 'System→Factory Default' to set the media player back to default settings.

7.0 Setting up the EM8100/EM8102 (Manually)

After using the wizard, the initial settings have been set. Now, you can completely set the media player to your own preferences.

Note: If the EM8100/EM8102 is connected to your network and has received a valid IP-Address, the device will automatically startup with the Portal.

7.1 Formatting the internal hard disk (EM8102 only)

1. Make sure the EM8102 is started and you are in the main menu by pressing the 'Menu' button on the remote control until you see the icons in the main menu.
2. Go to 'Setup' and press the 'OK' button on the remote control.
3. 'System' is selected by default, press the 'OK' button.
4. Go to 'Format' and press the 'OK' button.
5. Select 'Internal HDD' and press the 'OK' button.
6. Use the steps shown on the screen to format the hard disk.

7.2 Setting up the screen

1. Make sure the EM8100/EM8102 is started and you are in the main menu by pressing the 'Menu' button on the remote control until you see the icons in the main menu.
2. Use the navigation buttons to go to 'Setup' and press the 'OK' button.
3. Select 'Video' and press the 'OK' button.
4. Select the correct aspect ratio. When using a wide screen television, '16:9' is recommended.
5. Select the desired resolution at 'TV System'. When using a Full HD television, 1080P 60Hz is recommended. This resolution provides the best possible image quality.
6. 'Video Zoom' can be used to zoom in when playing video material. Only usable on full screen! Default setting is set to 'Off'.
7. If video content will be used with 'original' HD video specifications such as video with 24 frames per second, you can also set 1080P 24Hz to 'On'. This way, the video content with original video specification will be shown as fluently as possible.
8. If necessary, the 'Deep color' option can be set. The amount of bits will determine the amount of colors shown on screen. The higher amount of bits = More colors. Usually, 'Auto' is the ideal setting. Only change this option to a manual setting if you do know what the maximum amount of bits is for your television.

7.3 Setting up sound

If connected directly to your television:

1. Make sure the EM8100/EM8102 is started and you are in the main menu by pressing the 'Menu' button on the remote control until you see the icons in the main menu.
2. Use the navigation buttons to go to 'Setup' and press the 'OK' button.
3. Select 'Audio' and press the 'OK' button.
4. At 'HDMI Output', the setting needs to be set to 'LPCM'.
5. 'Surround Sound' needs to be set to 'Don't Care'.
6. The last item is 'Lip Sync'. Usually, 'AUTO' is the default setting and is the recommended setting. Only set the 'Lip Sync' option if you experience delay in audio playback. The maximum setting for lip sync is 500.

If connected to a HDMI DTS receiver:

Refer to the manual of your HDMI receiver to make sure which codecs are supported. The steps shown are default settings and are normally useable for a HDMI receiver.

1. Make sure the EM8100/EM8102 is started and you are in the main menu by pressing the 'Menu' button on the remote control until you see the icons in the main menu.
2. Use the navigation buttons to go to 'Setup' and press the 'OK' button.
3. Select 'Audio' and press the 'OK' button.
4. Select 'HDMI Output' and press the 'OK' button. Select 'RAW' and press the 'OK' button.
5. Select 'Surround Sound' and press the 'OK' button. If your HDMI receiver supports HD Audio formats, select 'HD Audio' and press the 'OK' button. If your HDMI receiver does not support HD Audio formats, select '5.1CH' or 'Don't Care' and press the 'OK' button.
6. The last item is 'Lip Sync'. Usually, 'AUTO' is the default setting and is the recommended setting. Only set the 'Lip Sync' option if you experience delay in audio playback. The maximum setting for lip sync is 500.

If connected to a DTS receiver using the coaxial or optical connection:

1. Make sure the EM8100/EM8102 is started and you are in the main menu by pressing the 'Menu' button on the remote control until you see the icons in the main menu.
2. Go to 'Setup' and press the 'OK' button.
3. Select 'Audio' and press the 'OK' button.
4. Select 'SPDIF Output' and press the 'OK' button. Set 'SPDIF Output' to 'RAW'.
5. Select 'Surround Sound' and press the 'OK' button. Select '5.1CH' and press the 'OK' button.
6. The last item is 'Lip Sync'. Usually, 'AUTO' is the default setting and is the recommended setting. Only set the 'Lip Sync' option if you experience delay in audio/video. The maximum setting for lip sync is 500.

7.4 Setting up the network

During the wizard, the initial network setup was available. The network settings can be changed afterwards if necessary. Also, it is possible to connect a wireless USB dongle such as the EM4576 or EM4579 to connect the media player wirelessly to your network. During the next chapter we will explain how wired network settings can be changed and how to setup a wireless connection.

7.4.1 Wired connection-Automatically using DHCP

1. Make sure the EM8100/EM8102 is started and you are in the main menu by pressing the 'Menu' button on the remote control until you see the icons in the main menu.
2. Go to 'Setup' and press the 'OK' button.

3. Select 'Network' and press the 'OK' button.
4. Select 'Wired Lan Setup' and press the 'OK' button.
5. Choose 'DHCP IP (AUTO)' to automatically obtain an IP-Address. Press the 'OK' button to confirm.
6. Choose 'DNS (auto)' and press the 'OK' button, after which the notification 'Save Network Setting' appears. Select 'Yes' and press the 'OK' button.
7. The connection will be tested. If correct, the notification 'Connected' will appear. Also, an 'IP-Address' and 'Submask' will be shown. Press the 'OK' button.
8. Press the 'Exit' button several times to return to the main menu.

7.4.2 Wired connection-Manually

In case your network does not have a DHCP server, or you want to manually add an IP-Address, you can use the following steps:

1. Make sure the EM8100/EM8102 is started and you are in the main menu by pressing the 'Menu' button on the remote control until you see the icons in the main menu.
2. Go to 'Setup' and press the 'OK' button.
3. Select 'Network' and press the 'OK' button.
4. Select 'Wired Lan Setup' and press the 'OK' button.
5. Choose 'FIX IP (Manual)' and press the 'OK' button.
6. Fill out an correct 'IP-Address' at 'IP Address'. This IP-Address needs to be in range with your network's IP-Address.
7. Fill out a correct 'Subnet Mask' at 'Subnet Mask'. This 'Subnet Mask' needs to be the same as used in your network.
8. Fill out the 'Default Gateway' at 'Default Gateway'. This Gateway is usually the same as your router's IP-Address.
9. Fill out a 'DNS Server' at 'DNS Server IP address'. You can fill out the same number as filled in at 'Default Gateway'. You can also fill out a DNS server which is in use by your provider.
10. Press the 'OK' button and choose 'Yes' at the 'Save Network Setting' question. Press the 'OK' button again to save the settings.

7.4.3 Wireless connection

After connecting a supported WIFI adapter into a USB port of the media player, such as the EM4576 or EM4579, the wireless network can be setup:

1. Make sure the EM8100/EM8102 is started and you are in the main menu by pressing the 'Menu' button on the remote control until you see the icons in the main menu.
2. Go to 'Setup' and press the 'OK' button.
3. Select 'Network' and press the 'OK' button.
4. Select 'Wireless Setup' and press the 'OK' button.
5. A list of available wireless networks will be displayed.
6. Select your own wireless network and press the 'OK' button.

7. If your network has been secured, you need to fill out your network's security key. If your security key uses one or more capital letters, you need to press the 'Zoom' button on the remote control for the Upper Case Alphabet. Press the 'Zoom' button again to switch to the Lower Case Alphabet.
8. Once the key has been filled in, select the 'OK' button on the screen and press the 'OK' button on the remote control. The connection will be tested. If correct, a list with network parameters will be displayed. Press the 'OK' button.
9. Press the 'Menu' button to return to the main menu.

Note: It is not possible to use a fixed IP-Address when using the wireless connection.

7.4.4 Enabling the Samba server

In order to be able to access the internal hard disk (EM8102), USB hard disk or USB memory stick which is connected to the media player using the local network, it is necessary to enable the 'Samba server' of the EM8100/EM8102. Enabling this feature will allow you to access the internal hard disk (EM8102), USB hard disk or memory stick which is connected to the media player.

1. Make sure the EM8100/EM8102 is started and you are in the main menu by pressing the 'Menu' button on the remote control until you see the icons in the main menu.
2. Go to 'Setup' and press the 'OK' button.
3. Select 'Network' and press the 'OK' button.
4. Select 'SAMBA Process'. The 'SAMBA Server' needs to be set to 'On'. If not, press the 'OK' button and select 'On' and press the 'OK' button again.

Note: How to access the EM8100/EM8102 using the local network will be explained in chapter 8.2.

8.0 Copying media to a connected USB device or copy media to the internal hard disk (EM8102 only)

During the following steps we will explain how to copy media through the network to a connected USB device. In case you are using the EM8102 with an internal hard disk, you can also use the file manager to copy files to the internal hard disk.

8.1 Using the File Manager

1. Make sure the EM8100/EM8102 is started and you are in the main menu by pressing the 'Menu' button on the remote control several times until you see the icons in the main menu.
2. Go to 'File Manager' and press the 'OK' button.
3. Select 'Net(work)' and press the 'OK' button.

4. Select the name of the network or choose the workgroup name and press the 'OK' button.
5. Select the name of the device you want to copy from and press the 'OK' button.
6. Browse to the file(s) you want to copy.
7. Press the green button on the remote control and choose 'Copy'. If you want to copy multiple files, choose the 'Multiple Select' option and press the 'OK' button. Select the files you want to copy and press the 'Play' button. Go to the 'File List' and press the green button.
8. Choose 'Copy' and press the 'OK' button.
9. Select the destination, in this case 'USB' and press the 'OK' button.
10. Select the name of the USB disk/stick and press the 'OK' button.
11. The content of the USB disk/stick will be shown.
12. Press the 'Play' button to start copying.
13. If you want, you can also create a new folder using the 'Zoom' button. You can also give a name to the new folder.
14. Once the new folder has been created, you can select the new folder and press the 'OK' button.
15. Press the 'Play' button to start copying.
16. A pop-up appears telling you copying the file(s) has been finished. Press the 'OK' button after which the copied content will be shown.

8.2 Using the network connection (Samba)

It is also possible to copy your media to a connected USB device or to the internal hard disk (EM8102 only) using the Samba protocol. This way, you can copy media to a USB device which is connected to the EM8100/EM8102, using your network. In case you are using the EM8102 with an internal hard disk, you can also use Samba to copy media to the internal hard disk, using your network.

1. Make sure the EM8100/EM8102 is started and you are in the main menu by pressing the 'Menu' button on the remote control until you see the icons in the main menu.
2. Go to 'Setup' and press the 'OK' button.
3. Select 'Network' and press the 'OK' button.
4. Write down the IP-Address shown at 'Wired Lan Setup' or 'Wireless Setup'.
5. Make sure 'SAMBA Process' is set to 'On'.
6. Go to 'System' and press the 'OK' button.
7. Select 'Host Name' and press the 'OK' button. Fill out a name for the EM8100/EM8102. This name can also be used to access the EM8100/EM8102 instead the whole IP-Address.
8. Press the 'Exit' button several times to return to the main menu.
9. Make sure your computer is started and is connected to the same network as the media player.
10. Open the Windows Explorer and type: [\\IP-Address](#) (The IP-Address you have written down) and press the 'Enter' key on the keyboard. You can also type the

name you have filled out at step 7. In that case, you need to fill in

[\namedevice](#) and then press the 'Enter' key on the keyboard.

11. Double-click the USB device or internal HDD (EM8102 only) after which the content of the USB device/HDD will be shown.
12. You are now able to copy data from your computer to the connected USB device.

Hint: After copying, the EM8100/EM8102 needs to initialize the USB device and/or internal hard disk. Please restart the device after which the EM8100/EM8102 will initialize the USB device and/or internal hard disk. Do not interrupt this procedure!

Important information:

Since the EM8100 and EM8102 are intended to be used as network devices with streaming capabilities, the transfer rate when copying data to a USB device connected to the EM8100/EM8102 using your network is not comparable to the copy capabilities of your computer. The media player's processing unit (CPU) and memory are specifically designed for media capabilities, not for transferring data as fast as possible. Since both CPU and memory are also responsible for the network performances, the transfer rate using the network is not as high in comparison to the transfer rate of your computer.

9.0 Playing Media

When you are finished setting up the media player, and you have copied files to the connected USB device, you can start to play these media files. You can also play files from your network or from the internal card reader.

The EM8100/EM8102 is able to play many types of video files. 'Regular' video files like DVD ISO and VIDEO_TS files are supported. Also, .MOV, .MKV, .AVI and Blu-Ray video files are supported.

9.1 Blu-Ray ISO

The media player is able to play unprotected Blu-Ray ISO / AVCHD ISO files. Use the following steps to play these ISO files.

1. Make sure the EM8100/EM8102 is started and you are in the main menu by pressing the 'Menu' button on the remote control until you see the icons in the main menu.
2. Select 'Movies' and press the 'OK' button.
3. Press the 'Option' button and select 'BD/DVD' and press the 'OK' button.
4. The Blu-Ray and DVD movies are shown.
5. Select the Blu-Ray ISO you want to play and press the 'OK' button.
6. The ISO file will start to play.

The EM8100/EM8102 can display the original Blu-Ray menu if the Blu-Ray has a 1.0 BR profile menu structure. The media player will automatically detect which profile is

present. If the media player detects a higher profile, the media player will not be using the original BD menu's. Instead, the device uses it's own menus for (HD) audio and subtitles.

Note: If your Blu-Ray ISO does not play, change the 'BD Menu' option to the 'On' or 'Off' position, depending on the current setting. This function can be found using 'Setup→System'.

9.2 DVD playback

The EM8100/EM8102 is able to play DVD files and DVD ISO's. DVD files made by yourself can be played without any problems. Also, the device has full DVD menu support.

The EM8100/EM8102 does not play commercial DVD's which have CSS security. However, DVD backups without security can be played.

9.2.1 DVD ISO

1. Make sure the EM8100/EM8102 is started and you are in the main menu by pressing the 'Menu' button on the remote control until you see the icons in the main menu.
2. Select 'Movies' and press the 'OK' button.
 1. Press the 'Option' button and select 'BD/DVD' and press the 'OK' button.
 2. The Blu-Ray and DVD movies are shown.
 3. Select the DVD ISO you want to play and press the 'OK' button.
 3. The ISO file will start to play. If menu support is available in the DVD ISO, the menu will be fully functional.

9.2.2 DVD VIDEO_TS

1. Make sure the EM8100/EM8102 is started and you are in the main menu by pressing the 'Menu' button on the remote control until you see the icons in the main menu.
2. Select 'Movies' and press the 'OK' button.
3. Press the 'Option' button and select 'BD/DVD' and press the 'OK' button.
4. Select the DVD file you want to play and press the 'OK' or 'Play' button.
5. If menu support is available, the menu will be fully functional.

9.3 Search and play other video formats

Besides the already explained video formats, the EM8100/EM8102 is able to play many other video formats, such as MKV. It is also possible to search for specific file extensions such as MKV. By using the 'Search' function, only the file extensions you search for will be shown.

1. Make sure the EM8100/EM8102 is started and you are in the main menu by pressing the 'Menu' button on the remote control until you see the icons in the main menu.
2. Select 'Movies' and press the 'OK' button.
3. Select 'Movies' and press the 'OK' button.
4. Press the 'Option' button.
5. Choose 'Search' and press the 'OK' button.
6. Only fill out: **.mkv**, select the 'OK' button on screen and then press the 'OK' button on the remote control. All available MKV files will be shown.
7. Select the MKV file you want to play and press the 'OK' of 'Play' button.

Hint: You can also use the search option to search for other file extensions such as .mov files and other.

Hint: Press the 'SUB-T' button to be able to select subtitles.

Note: Some MKV files do have subtitles in the MKV file itself. It is possible to add a SRT subtitle file, but then, the MKV file must not have a subtitle in the MKV itself. SRT subtitles can only be used without having the subtitles in the MKV itself. You can always put the SRT file into the MKV container using programs like 'MKVMERGE' which you can download from the internet. However, Eminent can not support these programs.

9.4 Playing music and other audio files

1. Make sure the EM8100/EM8102 is started and you are in the main menu by pressing the 'Menu' button on the remote control until you see the icons in the main menu.
2. Select 'Music' and press the 'OK' button.
3. If you want to play a specific album, press the 'Option' button and select 'Albums' and press the 'OK' button.
4. Select the name of the album and press the 'Play' button after which the first file of the album will start to play. All available files within the album will be played.

Hint: If you want to shuffle, press the 'Option' button while playing a music file and select 'Shuffle Loop' and press the 'OK' button.

Hint: If you want the audio files to be repeated, press the 'Option' button while playing a music file and choose 'Repeat one' or 'Repeat All'.

9.5 Playing photos and other images

1. Make sure the EM8100/EM8102 is started and you are in the main menu by pressing the 'Menu' button on the remote control until you see the icons in the main menu.
2. Select 'Photo' and press the 'OK' button.

3. Press the 'Option' button and select 'Leaf Folder View' to view the folder(s) where the images are stored.
4. Select a folder and press the 'Play' and then the 'OK' button to start playing these images present in the folder.
5. You can press the 'Next' button to view the next image.

It is also possible to show the images using a slide show. You can use the following steps to setup a slide show.

6. Press the 'Option' button while playing an image. Select 'Slide Timing' and press the 'OK' button. Select the amount of time an image will be visible, for example: '2 Seconds' and press the 'OK' button.
7. Press the 'Option' button. Select 'Slide Transition' and press the 'OK' button. Select the effect you want to use while using the slide show. If you want to use all possible effects, you can choose 'All Effect Shuffle' and press the 'OK' button.
8. Press the 'Option' button. If you want to hear background music during the slide show, select 'Background Music' and press the 'OK' button. If you want to hear music which is located in a specific album, select 'Select Music' and press the 'OK' button. Select the album and press the 'OK' button. Select the music file you want to start with and press the 'OK' button.
9. The slide show will be shown while your own music will be heard as background music.

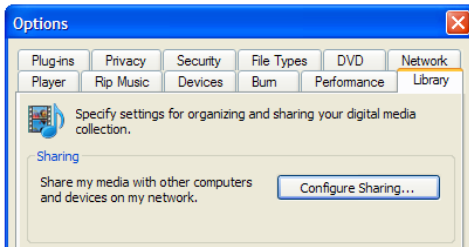
10.0 Playing media through the network

The media player is equipped with a UPnP and Samba client. This way, the media player will be able to stream media from a UPnP server or Samba server through your network. Windows XP and Vista are usually equipped with Windows Media Player. Since Windows Media Player 11 is the latest available version for these Windows versions, we will explain this version for Windows XP and Vista.

10.1 Setting up Windows media player 11 as UPnP server (Windows XP and Vista)

Your computer does not share media by default. You will have to install a UPnP media server on your computer to add this functionality. When using Media Player 11, you can use the built-in UPnP media service of this program. If you enable this option, your media player can access the music library on your computer. Follow the steps below to enable this option:

1. Click 'Start'.
2. Click 'Programs'.
3. Click 'Windows Media Player'.
4. Click 'Tools', then click 'Options'. The following screen will be displayed:



5. Go to the 'Library' tab in the left upper corner of the options window.
6. Now click 'Configure Sharing'.
7. Check the "Share my media" checkbox and click OK.



8. A list with detected devices will appear within a few seconds.
9. Click the name of your media player.
10. Click 'Allow'.
11. Click 'Ok'.
12. Click 'Ok'.
13. All files in the media library of Windows Media Player will be shared with your media player from now on. The media library will be accessible using the remote control and screen of the media player.

Note: Steps above are taken with Windows Media Player 11, available for download at <http://www.microsoft.com/windows/windowsmedia/player/>

10.2 Setting up Windows media player 12 as UPnP server (Windows 7)

Windows 7 is usually equipped with Windows Media Player 12. If streaming does not succeed directly, you can refer to the help function in Windows Media Player 12. Windows Media Player 12 has an extensive help function which can be used as a guide to setup your computer as a UPnP media server.

1. Open Windows Media player 12.
2. If Windows Media Player starts in the 'Now Playing' mode, click the 'Switch to Library' button located in the upper right corner of Windows Media Player.

3. Click 'Stream' and click 'Turn on home media streaming'.
4. Turn on 'Home Media Streaming' at 'Media streaming options'.

The steps above are usually sufficient to stream using the UPnP function of WMP 12. If this does not succeed, please visit the Microsoft website for more information.

Hint: Multiple other programs can turn your computer into a UPnP media server. Some of these programs are available for download, like tversity (www.tversity.com) or Twonkymedia (www.twonkyvision.de).

10.3 Playing media through your network (UPnP)

1. Make sure the EM8100/EM8102 is started and you are in the main menu by pressing the 'Menu' button on the remote control until you see the icons in the main menu.
2. Select 'File Manager' and press the 'OK' button.
3. Press the 'Option' button and select the category. If you want to play a video file using UPnP, select 'Movies' and press the 'OK' button.
4. Select 'UPNP' and press the 'OK' button after which the available UPnP server(s) will be shown.
5. Select the UPnP server you want to use and press the 'OK' button.
6. If necessary, select the correct folder and press the 'OK' button.
7. Now select the file you want to play and press the 'OK' button. The file starts to play.

Note: Although UPnP is easy to use, it has some flaws. If your video files are not recognized or you want to play DVD's or video files with separate subtitles files, it is recommended to make use of Samba, also known as shared folders.

10.4 Playing media through your network (Samba)

1. Make sure the EM8100/EM8102 is started and you are in the main menu by pressing the 'Menu' button on the remote control until you see the icons in the main menu.
2. Select 'File Manager' and press the 'OK' button.
3. Press the 'Option' button and select the category. If you want to play a video file using Samba, select 'Movies' and press the 'OK' button.
4. Select 'Network' and press the 'OK' button after which the workgroup(s) will be shown.
5. Select the correct workgroup and press the 'OK' button. The available Samba server(s) will be shown.
6. Select the Samba server you want to use and press the 'OK' button. If you need to login, enter the username and password and press the 'OK' button.
7. If necessary, select the correct folder and press the 'OK' button.
8. Now select the file you want to play and press the 'OK' or 'Play' button. The file starts to play.

Hint: Press the 'SUB-T' button to be able to select subtitles.

10.5 Playing media through your network using DLNA DMR

Both EM8100 and EM8102 have the option to function as a DLNA slave. This means the media player functions as a digital media receiver. Using this function, it is not necessary to turn on your television to play media. For example: If your media player is connected to your receiver, you can actually control the media player using another device which has a DLNA control point function. This way, you will be able to give a command to the media player which let's the media player play your music without the need to turn on your television.

Many devices these days can be used as control point. Windows Media player is able to do so, also are many smart phones such as Apples iPhone and Android smart phones. As example we will explain how to use the DLNA DMR function with Windows Media Player 12.

1. The first steps need to performed on your media player: Make sure the EM8100/EM8102 is started and you are in the main menu by pressing the 'Menu' button on the remote control until you see the icons in the main menu.
2. Select 'Setup' and press the 'OK' button.
3. Select 'System' and press the 'OK' button.
4. Select 'DLNA DMR' and make sure this option is set to 'On'
5. Open Windows Media Player 12 on your computer.
6. If Windows Media Player starts in the 'Now Playing' mode, click the 'Switch to Library' button located in the upper right corner of Windows Media Player.
7. Right-click a media file, for example a MP3 file and choose 'Play to' and then click the name of the media player*.
8. Within a few seconds, the selected file will be played on the media player.

It is not necessary to have the media on the same device as the control point. Your computer or smart phone can also act as a control point even if your media is stored on another device such as a NAS and is also connected within the same network.

**Note: It is possible to give the EM8100/EM8102 a DMR name. When selecting 'DLNA DMR' you can choose 'Device Name' and then press the 'OK' button. Give the device a name, this is the name which is available at step 7.*

11.0 Stream online using the Portal (WEB TV/Radio Apps)

Note: If the EM8100/EM8102 is connected to your network and has an internet connection, the device will automatically start the portal with the web applications.

11.1 Country selection

It is possible to make a country selection. Using this country selection, you will be able to see portal apps from available countries.

1. After starting the EM8100/EM8102, the portal will be shown. If you are in the main menu, you can press the 'Portal' button on the remote control to access the portal. The available internet streams will be visible.
2. Select the 'Services' icon and press the 'OK' button.
3. If you want to be able to see the web applications from all available countries, you need to select each country and press the 'OK' button. The selected country will be marked in a white color.
4. Select the 'Home' button at the top of the screen and press the 'OK' button on the remote control after which all available web applications will be loaded.

If you only want to see web apps from a certain country, then you have to make sure only this country is selected.

11.2 Using the web apps

1. After starting the EM8100/EM8102, the portal will be shown. If you are in the main menu, you can press the 'Portal' button on the remote control to access the portal. The available internet streams will be visible. Use the navigation buttons (right and left buttons) to select multiple pages. You can select a stream and press the 'OK' button to start the online stream.
2. You can also 'search' for a specific category. When you are in the main page of the Portal, you can select the 'Search' option (hourglass symbol) and press the 'OK' button.
3. You will now be able to search between different categories such as 'Entertainment', 'News', 'Games' and others. Once you have selected a category, press the 'OK' button.
4. The available streams which are divided in the chosen category will be shown.
5. Select the stream you want to watch using the navigation buttons of the remote control and press the 'OK' button to view the chosen stream.
6. If you want to close the current stream, you can press the 'Portal' button on the remote to switch to the main menu of the portal.

Note: The amount of available apps can vary. The available apps are offered by third parties. Eminent can not guarantee the continued functioning of an app if a third party decides to make changes to an app or decides to stop supporting the app.

11.3 Arranging apps

It is also possible to arrange web applications to your preferences. For example: If you want to move an icon which is located at the end of the list to the beginning of the list, you can use the following steps:

1. After starting the EM8100/EM8102, the portal will be shown. If you are in the main menu, you can press the 'Portal' button on the remote control to access the portal. The available internet streams will be visible. Use the navigation buttons (right and left buttons) to select multiple pages.
2. Select the arrange icon (icon with navigation buttons).
3. The icon will change to the word 'Arrange'. Press the 'OK' button.
4. Select a web application in the list and press the 'OK' button. The application will be highlighted.
5. Use the remote control to select the place you want the selected application to be placed. In this case, you need to select a web application which is placed at the beginning of the list.
6. Press the 'OK' button. The selected application will be placed on the location you have selected.

It is also possible to arrange web applications from other pages to the first page etc.

11.4 Using YouTube

Note: YouTube is provided by a third party. This third party can decide to make changes to YouTube or can decide to stop supporting the YouTube function. Therefore, Eminent cannot guarantee the continued functioning of this service!

The EM8100/EM8102 can also make use of the YouTube functionality. The available YouTube function is specifically designed to be used on televisions which means it is very easy to use.

1. After starting the EM8100/EM8102, the portal will be shown. The available internet streams will be visible. If you are in the main menu, you can press the 'Portal' button on the remote control to access the portal.
2. Select 'YouTube Videos' and press the 'OK' button. The YouTube page will be opened.
3. If you want to search for a specific title, select the 'Search' option and press the 'OK' button.
4. Select the 'Search for videos' icon and press the 'OK' button. The virtual keyboard will be displayed.

5. When the title has been filled out, select the 'OK' button on the screen and then press the 'OK' button on the remote control.
6. Select the 'Search' icon and press the 'OK' button on the remote control. The searched result(s) will be shown.
7. Select a result and press the 'OK' button on the remote control to play the YouTube file.

Hint: Press the 'Zoom' (Hourglass symbol) button to view the video in full screen.

Hint: Use the 'Login' feature to login to your personal Google or Gmail account to view your own uploaded videos.

11.5 Using the Social Connect features

Note: Facebook and Twitter are provided by a third party. This third party can decide to make changes to the Facebook or Twitter services or can decide to stop supporting these services. Therefore, Eminent cannot guarantee the working of these services!

The EM8100 and EM8102 are both able to use social connect features such as Facebook and Twitter. Use the following steps to use these features:

1. After starting the EM8100/EM8102, the portal will be shown. The available internet streams will be visible. If you are in the main menu, you can press the 'Portal' button on the remote control to access the portal.
2. Select the Facebook icon (Social Network) or Twitter icon (Get connected) and press the 'OK' button on the remote control.
3. A screen appears which allows you to login using your username and password (TV Nickname and TV Password).
4. Fill in your user data and select the 'Connect' icon. Press the 'OK' button on the remote control after which you will be logged on to the service.

Note: The media player saves your user settings such as your password. This means you only need to login once. You need to login again after changing the password.

12.0 Other functions

Besides the already mentioned functions, there are a few functions we will highlight:

Screen Saver:

The media player will automatically use a default screen saver when no other functions are in use while the media player is turned on. If desired, you can change the activation time for the screensaver, but you can also select whether the screen saver uses your own images as screen saver (EM8102 only). To change the screen saver settings:

1. Make sure the EM8100/EM8102 is started and you are in the main menu by pressing the 'Menu' button on the remote control until you see the icons in the main menu.
2. Select 'Setup' and press the 'OK' button.
3. Select 'System' and press the 'OK' button.
4. Select 'Screen Saver' and press the 'OK' button.
5. Select the activation time at 'Timing'.
6. The screen saver will now start accordingly the timing you have set.

Version Info:

Using this function, you will be able to retrieve the current firmware version. This can be handy since firmware upgrades can become available. Before upgrading, you need to know which firmware is already in use.

1. Make sure the EM8100/EM8102 is started and you are in the main menu by pressing the 'Menu' button on the remote control until you see the icons in the main menu.
2. Select 'Setup' and press the 'OK' button.
3. Select 'Misc' and press the 'OK' button.
4. Select 'Version Info' and press the 'OK' button after which the firmware version information will be shown amongst others.

Network Info:

Using this function, you will be able to retrieve more specific network information such as wired and wireless Mac-Addresses. This could be of importance if your router needs to have this information for security purposes. Also, the IP-Address will be shown.

1. Make sure the EM8100/EM8102 is started and you are in the main menu by pressing the 'Menu' button on the remote control until you see the icons in the main menu.
2. Select 'Setup' and press the 'OK' button.
3. Select 'Misc' and press the 'OK' button.
4. Select 'Network Info' and press the 'OK' button after which the detailed network information will be shown.

13.0 Frequently Asked Questions and other related information

The latest Frequently asked questions for your product can be found on the support page of your product. Eminent will update these pages frequently to assure you have the most recent information. Visit www.eminent-online.com for more information about your product.

If available, firmware updates will be downloadable using your computer's web browser. After downloading the firmware file(s), the downloaded file(s) need to be unpacked. The firmware file(s) and 'Readme' files will be available after unpacking. Before updating your firmware, make sure you have read the 'Readme' files. These files will contain instructions how to update your device properly.

Note: Read the installation instructions before updating your media player!

14.0 Service and support

This users manual has been carefully written by Eminent's technical experts. If you have problems installing or using the product, please fill out the support form at the website www.eminent-online.com/support

You can also contact us by phone. Below you will find a list with phone numbers for each supported country.

Country	Phone number	Rate per minute*
Belgium (Dutch)	070 277 286	€0.30
Belgium (French)	070 277 286	€0.30
Denmark	+45 69918565	Local Costs
Finland	+35 8942415826	Local Costs
Germany	(+49) (0)30 887 89 298	Local Costs
Italy	+39 0240042016	Local Costs
Norway	+47 21075033	Local Costs
Spain	807 080 042	€0.41
Sweden	+46 840 309985	Local Costs
The Netherlands	0900-3646368	€0.45
UK	(+44) (0)203 318 9998	Local Costs
Hungary	1-4088902 (From Budapest)	Local Costs
Hungary	06-1-4088902 (From the rest of Hungary)	Local Costs
Hungary	+36 1-4088902 (International)	Local Costs

* Rates mentioned in this table do not include cell phone charges.

15.0 Warning and points of attention



Due to laws, directives and regulations set out by the European parliament, some (wireless) devices could be subject to limitations concerning its use in certain European member states. In certain European member states the use of such devices could be prohibited. Contact your (local) government for more information about this limitations.

Always follow up the instructions in the manual, especially where it concerns devices which need to be assembled.

Warning: In most cases this concerns an electronic device. Wrong/improper use may lead to (severe) injuries!

Repairing of the device should be done by qualified Eminent staff. The warranty immediately voids when products have undergone self repair and/or by misuse. For extended warranty conditions, please visit our website at www.eminent-online.com/warranty

16.0 Warranty conditions

The five-year Eminent warranty applies to all Eminent products unless mentioned otherwise before or during the moment of purchase. When having bought a second-hand Eminent product the remaining period of warranty is measured from the moment of purchase by the product's first owner. The Eminent warranty applies to all Eminent products and parts inextricably connected to and/or mounted on the main product. Power supply adapters, batteries, antennas and all other products not integrated in or directly connected to the main product and/or products of which, without reasonable doubt, can be assumed that wear and tear show a different pattern than the main product are not covered by the Eminent warranty. Products are not covered by the Eminent warranty when subjected to incorrect/improper use, external influences and/or when opened by parties other than Eminent.

17.0 Declaration of Conformity

To ensure your safety and compliance of the product with the directives and laws created by the European Commission you can obtain a copy of the Declaration of Conformity concerning your product by sending an e-mail message to: info@eminent-online.com. You can also send a letter to:

Eminent Computer Supplies
P.O. Box 276
6160 AG Geleen
The Netherlands

Clearly state 'Declaration of Conformity' and the article code of the product of which you would like to obtain a copy of the Declaration of Conformity.



Trademarks: all brand names are trademarks and/or registered trademarks of their respective holders.
The information contained in this document has been created with the utmost care. No legal rights can be derived from these contents. Eminent cannot be held responsible, nor liable for the information contained in this document.



Eminent is a member of the Intronic Group