



EMINENT

**EM7385 & EM7380 hdMEDIA 3D – Full HD
Media Player with 3D & Android**

en

Manual

EM7385 & EM7380 hdMEDIA 3D – Full HD Media Player with 3D & Android

Table of contents

| | |
|---|----|
| 1.0 Introduction | 4 |
| 1.1 Functions and features | 4 |
| 1.2 Packing contents | 7 |
| 2.0 Explanation of the remote control | 8 |
| 3.0 Explanation of the connections | 9 |
| 3.1 Connections of the EM7385..... | 9 |
| 3.2 Connections of the EM7380..... | 10 |
| 4.0 Mounting a SATA hard disk (EM7385)..... | 11 |
| 5.0 Connecting the media player | 12 |
| 6.0 Setting up the media player | 12 |
| 6.1 Using the wizard (initial setup) | 12 |
| 7.0 Manual Settings..... | 13 |
| 7.1 Formatting the hard disk (EM7385 only) | 13 |
| 7.2 Setting up the screen..... | 13 |
| 7.3 Setting up sound..... | 14 |
| 7.3.1 If connected directly to your television: | 14 |
| 7.3.2 If connected to a HDMI DTS receiver:..... | 14 |
| 7.3.3 If connected to a DTS receiver using the coaxial (EM7385 only) or optical connection:..... | 14 |
| 7.4 Setting up the network | 15 |
| 7.4.1 Wired connection - Automatically using DHCP..... | 15 |
| 7.4.2 Wired connection - Manually..... | 15 |
| 7.4.3 Wireless connection..... | 15 |
| 7.4.4 Checking the Samba server and assign a DLNA DMR name..... | 16 |
| 8.0 Copying media to the hard disk of the media player..... | 17 |
| 8.1 Using the USB (3.0) slave connection..... | 17 |
| 8.2 Using the network connection (Samba) | 18 |
| 8.3 Saving a samba share in 'Favorites' | 19 |
| 8.4 Copying files using 'File Manager' | 19 |
| 8.5 Copying files using FTP | 20 |
| 9.0 Setting up the media player for media playback..... | 20 |
| 9.1 Media Library..... | 20 |
| 9.2 3D/2D video auto detect | 21 |
| 9.3 Subtitle encoding detection..... | 21 |
| 9.4 Default subtitle language | 21 |
| 9.5 3D subtitles..... | 22 |
| 9.6 BD menu | 22 |
| 9.7 Default Audio..... | 22 |
| 10.0 Playing Media | 22 |
| 10.1 Playing 3D Blu-Ray ISO | 26 |

| | | |
|--------|--|----|
| 10.2 | Playing other 3D video formats | 27 |
| 10.3 | Playing 2D Blu-Ray ISO | 27 |
| 10.4 | Playing DVD | 28 |
| 10.5 | DVD ISO..... | 28 |
| 10.6 | DVD VIDEO_TS | 28 |
| 10.7 | Play other video formats | 28 |
| 10.8 | Playing music and other audio files..... | 29 |
| 10.9 | Playing photos and other images..... | 29 |
| 11.0 | Using Movie info, Cover art and a video wall | 30 |
| 11.1 | Using the ThumbGen program..... | 31 |
| 11.2 | Showing Movie info..... | 35 |
| 11.3 | Showing Cover art | 36 |
| 11.4 | Using the Video Wall | 36 |
| 12.0 | Playing media through the network..... | 37 |
| 12.1 | Setting up Windows Media Player11 as UPnP server (Windows XP and Vista) | 37 |
| 12.2 | Setting up Windows Media Player 12 as UPnP server (Windows 7)..... | 38 |
| 12.3 | Play media through the network (UPnP)..... | 38 |
| 12.4 | Playing media through your network (Samba) | 39 |
| 12.5 | Playing media through your network using DLNA DMR | 39 |
| 12.6 | Play media through your network using iMediaShare..... | 40 |
| 13.0 | Android..... | 40 |
| 13.1 | Using Android..... | 41 |
| 13.2 | Installing Android apps | 41 |
| 13.3 | Using the default Android items | 42 |
| 13.3.1 | Browser | 42 |
| 13.3.2 | OI File Manager..... | 42 |
| 13.3.3 | Search..... | 43 |
| 13.3.4 | RT Media Center | 43 |
| 13.3.5 | Settings | 43 |
| 14.0 | Stream online media using the (web)apps | 43 |
| 14.1 | Using the web browser | 44 |
| 14.2 | Buddy Link..... | 44 |
| 15.0 | Using third Party Apps..... | 45 |
| 15.1 | Explanation of the Third Party Apps and other useful information | 45 |
| 15.1.2 | Eminent Open Source Forum | 45 |
| 15.1.3 | Support..... | 45 |
| 15.1.4 | Developer account..... | 45 |
| 15.2 | Using the Third Party Apps..... | 46 |
| 15.3 | Registering an account | 46 |
| 15.4 | Registering your player..... | 46 |
| 15.5 | Adding a Media Player to your account..... | 47 |
| 15.6 | Folders and subfolder | 47 |
| 15.7 | Adding an App to your account..... | 48 |
| 15.8 | Advanced functions | 48 |
| 15.8.1 | Sorting Apps..... | 48 |

| | |
|--|----|
| 15.8.2 Rating Apps..... | 49 |
| 15.8.3 Pin security..... | 49 |
| 15.8.4 Adding custom streams | 50 |
| 15.8.5 Using a .PLS file to add a radio stream..... | 50 |
| 15.8.6 Adding a video stream..... | 51 |
| 16.0 Downloading using the media player | 52 |
| 16.1 Setting up the NZBget module..... | 53 |
| 16.2 Using the NZBget module..... | 53 |
| 16.3 Using the Transmission module..... | 54 |
| 17.0 Using the Smart Remote app (Android) & Smart Control app (iOS) to control the media player..... | 55 |
| 17.1 Smart Remote for Android | 55 |
| 17.2 Smart Control for iOS devices..... | 55 |
| 18.0 Explanation of the remaining menu items | 56 |
| 18.1 System menu | 56 |
| 18.2 MISC menu | 56 |
| 18.2.1 Retrieving the software version and network data..... | 56 |
| 18.2.2 Other items of the MISC menu..... | 57 |
| 19.0 Frequently Asked Questions and other related information..... | 57 |
| 20.0 Service and support..... | 58 |
| 21.0 Warning and points of attention | 58 |
| 22.0 Warranty conditions..... | 59 |
| 23.0 Declaration of Conformity..... | 60 |

1.0 Introduction

Congratulations with the purchase of this high-quality Eminent product! This product has undergone extensive testing by Eminent's technical experts. Should you experience any problems with this product, you are covered by a five-year Eminent warranty. Please keep this manual and the receipt in a safe place.

Register your product now on www.eminent-online.com and receive product updates!

1.1 Functions and features

The Eminent EM7385 & EM7380 3D Full HD Media Player plays all your movies in full HD on your television, and in 3D Full HD on your 3D television. The brand new Realtek RT1186 chipset supports almost all file formats in Full HD 1080P. The Eminent EM7385 & EM7380 3D Full HD Media Player come with a five year warranty.

The powerful Realtek RT1186 chipset supports almost all 2D and 3D video codecs! Thanks to the brand new RT1186 processor running on 750MHz, the EM7385 & EM7380 hdMEDIA 3D, can decode a broad range of video files like MKV, VC-1, AVCHD MPEG-4, H.264 and X.264. All in Full HD 1080P resolutions. The EM7385 & EM7380 both support 3D formats like Side-by-Side, Top-Bottom and Frame packed. SRT-subtitles on 3D will be converted automatically.

Classic formats like DivX, XviD, MPEG-1 and MPEG-2 are also supported. The popular ISO file format for DVD-ROM has full menu, chapters and subtitle support. BD-ROM ISO files, for both 2D and 3D, can be played with menu support, chapters and PGS subtitle streams as well.

Full HD sound and video experience.

The Eminent 3D Media Player EM7385 & EM7380 do not only support amazing Full HD 1080P video, but also feature a crystal clear sound experience by supporting HD sound formats like Dolby TrueHD and DTS-HD master audio over its High Speed HDMI 1.4 port. An HD-supporting audio receiver is required for playback of the full HD audio track.

For full backwards compatibility, normal DTS(Core) and AC3(Embedded) tracks are available over High Speed HDMI 1.4 and SPDIF. The EM7385 is equipped with an internal Dolby Digital (AC3) and DTS decoder, for playback on non-HD equipment as well.

Movie info and Cover art.

The Eminent 3D Full HD Media Player EM7385 & EM7380 support ThumbGen to create movie info and cover art with your movies. With ThumbGen, you can create your own good looking video wall. Besides the support for ThumbGen the EM7385 & EM7380 can give you movie information from the internet movie database just by pressing the info button on your remote control.

Easy to use.

A new Graphical User Interface was designed to make the EM7385 & EM7380 even easier to be controlled. You can control the 3D Media Player in an easy and convenient way.

The Eminent EM7385 & EM7380 can also be controlled using your Apple (iOS) or Android phone or tablet by using the 'Remote control' App. This App has been developed specifically by V One Multimedia. Download the App from the App Store or Android Market.

Full black aluminum body for the EM7385.

The Eminent 3D media player EM7385 hdMEDIA 3D comes in an unique full aluminum body, that keeps the unit cool, and isolates noise from the optional internal hard drive. A sleek black finish complete the units stunning good looks!

Compact black aluminum housing for the EM7380.

The Eminent 3D media player EM7380 hdMEDIA 3D comes in an unique full aluminum body, that keeps the unit cool. A sleek black finish complete the units stunning good looks!

Easy hard disk mounting system for your comfort.

The Eminent EM7385 hdMEDIA 3D is equipped with an easy-mount slot on the right side, that allows easy access to a 3.5" SATA hard drive bay. This is definitely the most convenient way to connect and remove your hard disk!

Built-in 300N Wireless networking for the EM7385.

The Eminent 3D Media Player EM7385 has been equipped with a built-in wireless adapter and two external antennas. Using a 300N wireless router you will be able to quickly access all the media in your home network. The wireless adapter is backwards compatible with 802.11B and G networks, but for an optimal experience we recommend to use a wireless N network.

Optional Wireless networking for the EM7380.

The Eminent 3D Media Player EM7380 has the possibility to be equipped with a EM4576 or EM4579 wireless adapter. Using a 300N wireless router you will be able to quickly access all the media in your home network. The wireless adapter is backwards compatible with 802.11B and G networks, but for an optimal experience we recommend to use a wireless N network.

USB 3.0 super speed for data transfer from your computer to the EM7385.

Use the USB 3.0 connection on the EM7385 to connect to your computer equipped with an USB 3.0 port and you will have all your data copied with an amazing speed to the internal hard disk. Did you know that by using USB 3.0 you will save a lot of time copying your files (up to 10x faster than USB 2.0)?

Access your files stored on your network.

The Eminent EM7385 hdMEDIA 3D & EM7380 can play media directly from your network. So, if you have your media files stored on a computer, or NAS device, you will love the networking support that has been integrated into the 3D Media Player EM7385 and EM7380 hdMEDIA 3D. The internal Gigabit LAN port allows you to quickly connect your home network and play files directly from your PC or other devices. Featuring full UPnP and SAMBA support you will never have a dull moment in your home again.

Plays music and photos at the same time.

The Eminent 3D Media Player EM7385 & EM7380 support a broad range of audio files including MP3, OGG, and the popular lossless FLAC format. And these devices are also capable of multitasking as well, allowing you to play your music collection while watching your photos in a slide show at the same time!

Simple and fast downloads.

The network connection of the media players allows you to easily download all sorts of media files. The EM7385 & EM7380 both come with built-in Transmission (BitTorrent) and NZBget (Usenet) programs. These programs can download and extract files for you even if your computer is turned off!

Web services and Android.

The EM7385 & EM7380 hdMEDIA 3D do both support web services like Metafeeds, Flickr, Picasa, Shoutcast Internet Radio and News. You can even watch Catch-up-TV and VOD/RSS service by the integrated third-party-apps. The availability of other web services is subject to change.

The Eminent EM7385 & EM7380 have a dual boot system to start the Android operating system. Unlimited Apps and games are available for android. The best apps for EM7385 & EM7380 can be found on the Eminent website.

1.2 Packing contents

The following parts need to be present in the packing:

- EM7380 HD Media Player 3D or EM7385 HD Media Player 3D
- Two antennas (EM7385 only)
- Power supply
- Remote Control + batteries
- HDMI High Speed (1.4) cable
- USB 3.0 A-A cable 1 meter (EM7385 only)
- SATA cable (EM7385 only)
- CD-ROM with manual
- Quick Installation Guide

2.0 Explanation of the remote control



1. **On/off:** button to turn on or turn off the media player.
2. **Numeric buttons:** Mainly used to jump to the corresponding chapter number.
3. **Menu:** Mainly used to select views and to select a 3D view while playing a 3D video file.
4. **Title:** Access the title menu of the movie (if supported).
5. **Volume:** Used to increase or decrease the sound volume.
6. **Mute/audio:** Used to mute the sound or select the audio stream.
7. **Previous/next:** Used to select the next (audio) file.
8. **Home:** Return to the main menu.
9. **Return:** Return to a previous step.
10. **Navigation:** Buttons to navigate through the menu options.
11. **Time seek:** Used to select a specific timeframe.
12. **Info:** Shows information about the played file.
13. **Function buttons:** Used when playing files → Play/start, stop, forward etc.
14. **System buttons:** Used to select the zoom function, aspect ratio, enter the settings menu and change the resolution.
15. **Colored buttons:** Mainly used while using the 'File manager' function. Also, movie posters can be selected using the colored buttons.

Image 1 – Remote control

3.0 Explanation of the connections

3.1 Connections of the EM7385



Image 2 – Connections EM7385

1. **On/Off switch:** Used to switch the media player on and off.
2. **WIFI connection(s):** Connect the antenna's to the two WIFI connectors.
3. **Restore:** Can be used while performing a firmware update.
4. **Power connection:** Connection for the power cable (12V).
5. **Card reader:** Connection for external memory cards such as SD and MMC cards.
6. **Optical S/PDIF connection & Coaxial connection:** Audio connection to connect to your digital receiver.
7. **Composite & component connections:** Composite: Used to connect to an analogue television (Yellow is video, red and white are audio connections) or connect the red and white connections to an analogue receiver. Component: Used to connect to a HD television with component connections.
8. **Gigabit LAN:** Connection used to connect to your (Gigabit) LAN network.
9. **HDMI connection:** HDMI 1.4 also known as HDMI High speed connection. Used to connect to your HD television or HDMI receiver.

10. **USB 2.0 host:** Used to connect USB devices such as a USB hard disk, USB memory sticks etc.
11. **SATA connection:** Used to connect an external SATA disk.
12. **USB 3.0 slave:** Used to connect to your computer using the supplied USB 3.0 cable.
13. **USB 3.0 host:** Used to connect USB (3.0) devices such as USB (3.0) hard disk, USB (3.0) memory stick etc.
14. **USB 2.0 host:** Used to connect USB devices such as USB hard disk, USB memory stick etc.

3.2 Connections of the EM7380

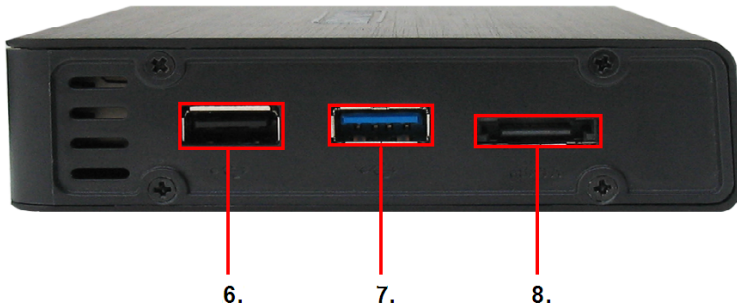
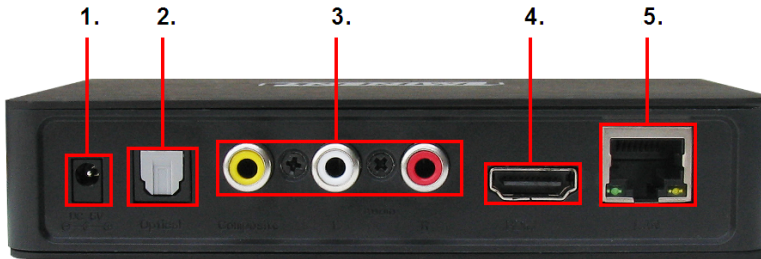




Image 3 – Connections EM7380

1. **Power connection:** Connection for the power cable (5V)
2. **Optical S/PDIF connection:** Audio connection to connect to your digital receiver.
3. **Composite connections:** Used to connect to an analogue television (Yellow is the video, red and white are audio connections). Or connect the red and white connections to an analogue receiver.
4. **HDMI connection:** HDMI 1.4 also known as HDMI High speed connection. Used to connect to your HD television or HDMI receiver.
5. **Gigabit LAN:** Connection used to connect to your (Gigabit) network.
6. **USB 2.0 host ports:** Used to connect USB devices such as a USB hard disk, USB memory sticks etc.
7. **USB 3.0 host port:** Used to connect USB (3.0) devices such as a USB (3.0) hard disk, USB (3.0) memory sticks etc.
8. **e-SATA port:** Used to connect e-SATA devices such as an e-SATA hard disk.
9. **Restore:** Can be used while performing a firmware update.

4.0 Mounting a SATA hard disk (EM7385)

The following steps describe how to connect a SATA hard disk into the media player. The EM7385 uses a hard disk locking mechanism which makes it very easy to mount a hard disk.

1. Take the EM7385 out of the packaging.
2. Open the hard disk slot on the side by pressing the two sliders two each other.
3. Slide out the hard disk locking mechanism.
4. Place a SATA hard disk in the hard disk locking system. The sticker on the hard disk needs to be on top (facing towards you) and the connections of the hard disk faces outside the hard disk locking mechanism.
5. If correct, the two screw holes of the hard disk locking mechanism (one at each side) are exactly aligned with the screw holes of the hard disk itself.
6. Fix the screws into position.

7. Now carefully place the hard disk locking mechanism in front of the hard disk slot. Make sure the two outstanding edges of the hard disk locking system are aligned with the two notches of the hard disk slot.
8. Carefully slide the hard disk locking mechanism into the hard disk slot.
9. The hard disk 'clicks' into position.
10. Now press the two sliders outside to the 'Lock' position.

5.0 Connecting the media player

1. Connect the HDMI cable to the HDMI connection of the EM7385 or EM7380 and connect the other side of the HDMI cable to a free HDMI connection on your television. In case you do not have a free HDMI connection on your television, you can use the component connections (only EM7385!) of both the media player and television to obtain high definition images. You can also make use of the composite connection when using an older CRT television.
2. If desired, connect a network cable to the LAN connection of the EM7385 or EM7380. Connect the other side of the network cable to your router or switch.
3. Set the television to the corresponding HDMI channel.
4. Connect the cable of the power supply to the 'DC 12V' of the EM7385, or connect the cable of the power supply to the 'DV 5V' of the EM7380.
5. Connect the power supply to a wall outlet.

In case you want to use a HDMI receiver, you need to connect the HDMI cable to both media player and HDMI receiver.

If you want to play 3D images using a receiver, please make sure you are using a receiver with HDMI 1.4 ports (HDMI IN and HDMI OUT)!

6.0 Setting up the media player

6.1 Using the wizard (initial setup)

When using the EM7385: Press the On/off switch of the media player to the '1' position to start the media player. In case of the EM7380: The moment the power supply has been connected to a wall outlet and to the media player, the media player automatically starts. Usually, a wizard will be shown. This wizard can be used to setup the media player.

1. The wizard starts with the menu language. Press the 'OK' button on the remote control to enter the language selection. In this case, select 'English' and press the 'OK' button.
2. Then 'Wired LAN Setup' is selected. Press the 'OK' button to enter the selection menu. If the media player has been connected using a network cable, you can select 'DHCP IP (AUTO)' to automatically assign an IP-Address to the media player.

3. When DNS (AUTO) is shown, you need to press the 'OK' button. Press the 'OK' button when the question 'Save Network Setting' appears. The connection will be tested. If correct, the notification 'Connected' will appear. Also, an 'IP-Address' and 'Submask' will be shown. Press the 'OK' button.
4. Then press the 'Return' button to enter the main menu.

Note: If you want to manually set the IP-Address and other network settings, you need to select 'FIX IP (MANUAL)' and fill out the necessary data. Press the 'OK' button to confirm your input.

Hint: If the wizard does not appear after the first startup, you need to set the media player back to default settings. After this procedure, the wizard will appear. Using 'Setup→System→Factory Default' the media player will be set back to factory default. After this procedure, the wizard starts.

7.0 Manual Settings

After using the wizard, the initial settings have been set. Now, you can completely set the media player to your own preferences.

7.1 Formatting the hard disk (EM7385 only)

1. Use the navigation buttons to go to 'Setup' and press the 'OK' button after which the 'System menu' is selected by default.
2. Go to 'Format' and press the 'OK' button.
3. Select 'Internal HDD' and press the 'OK' button.
4. Use the steps shown on screen.

7.2 Setting up the screen

1. Use the navigation buttons to go to 'Setup' and press the 'OK' button.
2. Select 'Video'.
3. Select the correct aspect ratio. When using a wide screen television, '16:9' is recommended.
4. Select the desired resolution at 'TV System'. When using a Full HD television, 1080P 60Hz is recommended. This resolution provides the best possible image quality.
5. 'Video Zoom' can be used to zoom in when playing video material. Only usable on full screen! Default setting is set to 'Off'.
6. If video content will be used with 'original' HD video specifications such as video with 24 frames per second, you can also set 1080P 24Hz to 'On'. This way, the video content with original video specification will be shown as fluently as possible.
7. If necessary, the 'Deep color' option can be set. The amount of bits will determine the amount of colors shown on screen. The higher amount of bits = More colors.

Usually, 'Auto' is the ideal setting. Only change this option to a manual setting if you do know what the maximum amount of bits is for your television.

7.3 Setting up sound

Hint: If the HDMI Output is set to 'Auto', the media player will automatically use the correct settings. When using the 'Auto' function, there is no need for manual settings.

7.3.1 If connected directly to your television:

1. Use the navigation buttons to go to 'Setup' and press the 'OK' button.
2. Select 'Audio'.
3. If the media player will be used mainly during night-time, the 'Night Mode' can be set to 'ON' or 'Comfort'. When set to 'On', low-level audio content such as dialog will be increased making it easier to hear at low volume levels. When set to 'Comfort', the intensity of higher-level audio content will also be reduced.
4. Make sure the 'HDMI Output' is set to 'LPCM' and press the 'OK' button.
5. Select 'Surround Sound' and press the 'OK' button. Select '5.1 CH' or 'Don't care' and press the 'OK' button.

7.3.2 If connected to a HDMI DTS receiver:

Refer to the manual of your HDMI receiver to make sure which codecs are supported. The steps shown are default settings and are normally useable for a HDMI receiver.

1. Use the navigation buttons to go to 'Setup' and press the 'OK' button.
2. Select 'Audio'.
3. If the media player will be used mainly during night-time, the 'Night Mode' can be set to 'ON' or 'Comfort'. When set to 'On', low-level audio content such as dialog will be increased making it easier to hear at low volume levels. When set to 'Comfort', the intensity of higher-level audio content will also be reduced.
4. Set 'HDMI Output' to 'RAW' and press the 'OK' button.
5. Select 'Surround Sound' and press the 'OK' button. If your HDMI receiver supports 'Dolby True HD', select 'HD Audio'. If your HDMI receiver does not support 'Dolby True HD', select '5.1 CH' or 'Don't Care'.

7.3.3 If connected to a DTS receiver using the coaxial (EM7385 only) or optical connection:

1. Use the navigation buttons to go to 'Setup' and press the 'OK' button.
2. Select 'Audio'.
3. If the media player will be used mainly during night-time, the 'Night Mode' can be set to 'ON' or 'Comfort'. When set to 'On', low-level audio content such as dialog will be increased making it easier to hear at low volume levels. When set to 'Comfort', the intensity of higher-level audio content will also be reduced.
4. Select 'SPDIF Output' and press the 'OK' button. Set 'SPDIF Output' to 'RAW'.
5. Select 'Surround Sound' and press the 'OK' button. Select '5.1 CH' or 'Don't Care' and press the 'OK' button.

7.4 Setting up the network

During the wizard, the initial network setup was available. The network settings can be changed afterwards if necessary. The EM7385 also has a built-in WIFI module, which allows you to easily setup the wireless connection. The EM7380 can also connect to your wireless network by connecting an EM4576/4579 wireless USB stick. During the next chapter we will explain how wired network settings can be changed and how to setup a wireless connection.

7.4.1 Wired connection - Automatically using DHCP

1. Use the navigation buttons to go to 'Setup' and press the 'OK' button.
2. Select 'Network'.
3. Select 'Wired Lan Setup' and press the 'OK' button.
4. Choose 'DHCP IP (AUTO)' to automatically obtain an IP-Address. Press the 'OK' button to confirm.
5. Choose 'DNS (auto)' and press the 'OK' button, after which the notification 'Save network setting appears'. Select 'Yes' and press the 'OK' button.
6. The connection will be tested. If correct, the notification 'Connected' will appear. Also, an 'IP-Address' and 'Submask' will be shown. Press the 'OK' button.
7. Press the 'Home' button to return to the main menu.

7.4.2 Wired connection - Manually

In case your network does not have a DHCP server, or you want to manually add an IP-Address, you can use the following steps:

1. Use the navigation buttons to go to 'Setup' and press the 'OK' button.
2. Select 'Network'.
3. Select 'Wired Lan Setup' and press the 'OK' button.
4. Choose 'FIX IP (Manual)' and press the 'OK' button.
5. Fill out a correct 'IP-Address' at 'IP Address'. This IP-Address needs to be in range with your network's IP-Address.
6. Fill out a correct 'Subnet Mask' at 'Subnet Mask'. This 'Subnet Mask' needs to be the same as used in your network.
7. Fill out the 'Default Gateway' at 'Default Gateway'. This Gateway is usually the same as your router's IP-Address.
8. Fill out a 'DNS Server' at 'DNS Server IP address'. Preferably, you need to fill out a DNS server which is in use by your provider.
9. Press the 'OK' button and choose 'Yes' at the 'Save' question. Press the 'OK' button again to save the settings.
10. Press the 'Home' button to return to the main menu.

7.4.3 Wireless connection

Use the following steps to connect to your wireless network using the built-in WIFI module.

1. When using the EM7385: Place the antenna's on the antenna connections and make sure the antenna's are properly connected. When using the EM7380, you need to connect the EM4576/4579 to a free USB port of the EM7380. If correct, a notification appears telling 'WIFI' has been found.
2. Use the navigation buttons to go to 'Setup' and press the 'OK' button.
3. Select 'Network'.
4. Select 'Wireless Setup' and press the 'OK' button.
5. A list of available wireless networks will be displayed.
6. Select your own wireless network and press the 'OK' button.
7. If your network has been secured, you need to fill out your network's security key. If your security key uses one or more capital letters, you need to press the 'Zoom' button on the remote control for the Upper Case Alphabet. Press the 'Zoom' button again to switch to the Lower Case Alphabet. You can also use the red button on the remote control to fill out symbols.
8. Once the key has been filled out, press the 'Play' button on the remote control. The connection will be tested. If correct, a list with network parameters will be displayed. Press the 'OK' button.
9. Press the 'Home' button to return to the main menu.

Note: It is not possible to use a fixed IP-Address when using the wireless connection.

Note: If you do not want to use the wireless connection anymore, because you want to use the wired connection again, you need to use the following steps:

1. Go to 'Setup' and press the 'OK' button
2. Go to 'Network', select 'Wireless Setup' and press the 'OK' button.
3. Press the 'Time Seek' (hour glass symbol) button on the remote control after which the media player searches for available SSID's.
4. Select a SSID to connect with, fill out an imaginary key and let the media player connect to this network.
5. While the media is trying to connect, you need to cancel this operation. The wireless connection will then be set to 'Off'.
6. You can now set the wired connection as described in chapter 7.4.2.

7.4.4 Checking the Samba server and assign a DLNA DMR name

In order to be able to access the hard disk of the media player using the local network, it is necessary the 'Samba server' is enabled. The Samba server is enabled by default. If the Samba server is enabled, you will be able to access the hard disk of the media player using the local network.

Also, you can assign a DLNA DMR network name to the media player. This name can be selected while using the DLNA DMR option and/or while using iMediaShare.

1. Use the navigation buttons to go to 'Setup' and press the 'OK' button.
2. Select 'Network'.
3. Select 'SAMBA Server'. The 'SAMBA Server' needs to be set to 'On'. If not, press the 'OK' button and select 'On' and press the 'OK' button again.

4. Use the navigation buttons to go to 'System'.
5. Select 'Device Name' and press the 'OK' button. This device name can be used to stream using DLNA DMR and by using the iMediaShare software (Chapter 11.6 and 11.7)
6. You can now fill out a DLNA name for the media player. Press the 'Zoom' button for the Upper Case Alphabet. Press the 'Zoom' button again to switch to the Lower Case Alphabet. You can also use the red button on the remote control to add symbols. When you are finished, select the 'OK' button on screen and press the 'OK' button on the remote control.

Note: How to access the hard disk of the media player using the local network will be explained in chapter 8.2.

8.0 Copying media to the hard disk of the media player

Once the media player has been setup, you can start to copy your media files to the internal hard disk of the EM7385.

8.1 Using the USB (3.0) slave connection

The media player has a fast next generation USB 3.0 slave connection. Using this USB 3.0 slave connection, copying data will be done with incredible speed. The highest possible transfer rate will be achieved if your computer also has a USB 3.0 connection and if you are using a USB 3.0 cable. If your computer does not have a USB 3.0 connection, a USB 2.0 connection can still be used since USB 3.0 is also compatible with USB 2.0.

Note: The EM7385 has two USB 3.0 connections. If you want to connect the media player to your computer, you need to use the USB 3.0 slave connection on the back of the EM7385. Also see the following image:



Image 4 – USB slave/host EM7385

1. Make sure the media player is completely started.

2. Take the supplied USB 3.0 cable out of the packing.
3. Connect the USB cable to the USB 3.0 (slave) connection of the media player (blue USB connection).
4. Connect the other side of the USB cable to a free USB (3.0) connection of your computer.
5. Your computer will automatically recognize and install new hardware. Once the recognition has been finished, the media player's hard disk will be recognized by your computer as an extra local hard disk.
6. Use the Windows explorer to browse to the hard disk. You will now be able to copy data to the hard disk of the media player.
7. The moment you have finished copying the data, you need to safely disconnect the USB cable from your computer or media player (Right-click the USB sign next to the clock and click 'Safely remove hardware'). If not, the media player will not be able to play the copied files.

8.2 Using the network connection (Samba)

It is also possible to copy your media using the network connection. This way, there is no need to connect your media player to your computer.

1. Use the navigation buttons to go to 'Setup' and press the 'OK' button.
2. Select 'Network'.
3. Make sure 'SAMBA Server' is set to 'On'.
4. Press the 'Home' button to return to the main menu.
5. Make sure your computer is started and is connected to the same network as the media player.
6. Open the Windows Explorer and type: [\IP-Address](#) or type the device name, in this case: \\EM7385 and press the 'Enter' key on your keyboard.
7. Double-click 'HDD' after which the hard disk content of the media player is shown.
8. You are now able to copy data from your computer to the hard disk of the media player using the network connection.

Important information:

Since the media player is intended to be used as a media player with streaming capabilities, the transfer rate when copying data using your network is not comparable to your computer. The media player's processing unit (CPU) and memory are specifically designed for media capabilities, not for transferring data as fast as possible. Since both CPU and memory are also responsible for the network performances, the transfer rate using the network is not as high in comparison to the transfer rate of your computer. This means the media player will not reach the same copying speed and downloading speed as you can reach using a computer!

8.3 Saving a samba share in 'Favorites'

It is possible to create a shortcut to your Samba shares, by placing this share in the favorites list. This means you can create a shortcut to a specific folder on a network device such as a NAS. This way, you do not need to login every time and you do not have to browse to the specific folder.

1. Use the navigation keys to select 'Manager' and press the 'OK' button.
2. Select 'Network' and press the 'OK' button after which the workgroup(s) will be shown.
3. Select the correct work group and press the 'OK' button. The available Samba server(s) will be shown.
4. Select the Samba server you want to use and press the 'OK' button. If you need to login enter the username and password and press the 'OK' button.
5. Select the folder you want to add to the 'Favorite' list.
6. Press the 'Menu' button and select 'Add to Favorites' and press the 'OK' button.
7. Return to the main menu.
8. Use the navigation keys to select 'Favorites' and press the 'OK' button.
9. Select 'Favorite' from the main menu and choose the added favorite and press the 'OK' button. You do not have to login manually again and there is no need to browse through folder!

8.4 Copying files using 'File Manager'

The media player also has its own copy function. Using this function, it is possible to copy from USB devices, your network and SD cards (only EM7385) to the internal hard disk of the media player (Only EM7385). Also, it is possible to copy from the internal hard disk or network to USB devices, your network and SD cards. The big advantage of this copy method is that copying can be done using the menu of the media player without the need to physically connect the media player to your computer. During the following steps we will copy files from a connected USB device to the internal hard disk of the media player.

1. Connect the USB device to a free USB port of the media player.
2. Select using the navigation buttons 'Manager' and press the 'OK' button.
3. Select 'USB' and press the 'OK' button. If a drive letter is shown, press the 'OK' button again.
4. Browse to the file you want to copy and press the green button on the remote control.
5. Choose 'Copy' and press the 'OK' button.
6. A 'Copy Destination' screen appears. Select 'HDD' and press the 'OK' button. Select 'HDD' again and press the 'OK' button.
7. Select the folder you want to copy to and press the 'OK' button. If you want to create a new folder, press the 'Time Seek' button. Fill out a name for the new file. Select 'OK' and press the 'OK' button on the remote control and then select the newly created folder and press the 'OK' button.

8. Press the 'Play' Button to start 'Copying'. A status screen appears.
9. When copying is finished, you need to press the 'OK' button on the remote control. You will be guided to the file you have just copied.
10. Press the 'Return' button several times to return to the main menu.

Hint: You can also copy from the network or a (other) connected USB device to a connected USB hard disk (Both EM7385 & EM7380)

8.5 Copying files using FTP

The EM7385 and EM7380 both have a FTP server. The FTP server is available if a internal hard disk is present in the EM7385, or if a USB stick or USB hard disk is connected to one of the USB ports (EM7385 & EM7380). We recommend to use a FTP program such as 'FileZilla'. The following steps were done using 'FileZilla'.

1. Use the navigation keys to select 'Setup' and press the 'OK' button.'
2. Select 'Network' and press the 'OK' button.
3. Make sure you know your media player's IP-Address. Select 'Network Info' and press the 'OK' button after which the (detailed) network information is shown. Return to the main menu.
4. Open 'FileZilla' on your computer.
5. Fill out your media player's IP-Address at 'Host'.
6. Fill out the username at the 'username' field. If you want to connect to the internal hard disk of the EM7385, you need to fill out 'hdd' as username. If you want to connect to a connected USB stick or USB hard disk (EM7385 & EM7380), you need to fill out 'usb' as user name.
7. You can fill out any made-up password at the 'Password' field.
8. Click 'Connect' or press the 'Enter' key on your keyboard after which the FTP connection will be made.
9. You can now 'drag' files from the local site (your computer) to the 'external site' (media player).

9.0 Setting up the media player for media playback

Before you start to play your media files, you might want to setup some options which are useful for media play. The media player has multiple options which can be set for media playback. During the following chapter, we will discuss the most important options and which options should be turned on or off by default. If desired, you can make any changes you want to these settings.

9.1 Media Library

The EM7385 & EM7380 have the possibility to create a library or database of the media content which is placed on the internal hard disk (EM7385) or connected USB

devices (EM7385 & EM7385). This way, when a category is selected, all media belonging to this category will be shown. At movies, all supported video files will be shown at once, at 'Music', all supported audio files will be shown at once and at 'Photo', all supported image files will be shown at once. Using the 'Menu' button on the remote control, you will be able to select different views and make more detailed selections.

1. Go to 'Setup' and press the 'OK' button on the remote control.
2. Go to 'MISC'.
3. If you want a library of database to be created, you need to set the 'Media Library' to 'On'.
4. However, the default setting is 'Off'.

Please note: When 'Media Library' is set to 'On', the library or database will be created during a restart. Creating the library or database can take a while, depending on the amount of media files stored on your (USB) hard disk.

9.2 3D/2D video auto detect

The EM7385 & EM7380 have the possibility to switch to a 3D mode if the media player detects a 3D stream. To be able to switch to a 3D mode, the media player needs to be connected to a 3D television using a HDMI High Speed (HDMI 1.4) cable.

1. Go to 'Setup' and press the 'OK' button on the remote control.
2. Go to 'MISC'.
3. If you are using a 3D television, the 3D/2D video auto detect' option is available.
4. Check whether 'Auto 3D' is set. 'Auto 3D' is the default setting.

9.3 Subtitle encoding detection

This option makes sure the media player automatically detects the text encoding of the subtitle to display the subtitle(s) correctly.

1. Go to 'Setup' and press the 'OK' button.
2. Go to 'MISC'
3. Select 'Subtitle encoding detection'. This option is set to 'On' by default

9.4 Default subtitle language

This option makes sure the subtitle will be displayed in the preset language (if available).

1. Go to 'Setup' and press the 'OK' button.
2. Go to 'MISC'.
3. Select 'Subtitle encoding detection'. This option is set to 'Dutch' by default.

9.5 3D subtitles

The EM7385 & EM7380 can display 3D subtitles.

1. Go to 'Setup' and press the 'OK' button on the remote control.
2. Go to 'MISC'.
3. Select the '2D to 3D subtitle conversion'. This option is set '3D Side by Side' by default. This setting is usually the best for 3D movies.

9.6 BD menu

The EM7385 & EM7380 are able to show Blu-Ray menu's which have a Blu-Ray 1.0 profile.

1. Go to 'Setup' and press the 'OK' button.
2. Go to 'MISC'.
3. Make sure the 'BD Menu' option is set to 'Ask Always' which is the default setting. This way, the media player will ask you to play a Blu-Ray movie with or without menu structure (if available).

9.7 Default Audio

This option makes sure the media player will start with the preset language automatically, instead of another language (When playing a DVD movie).

1. Go to 'Setup' and press the 'OK' button.
2. Go to 'MISC'.
3. Go to 'Default Audio'. This option is set to 'Dutch' by default.

10.0 Playing Media

When you are finished setting up the media player, and you have filled the hard disk of the EM7385 with media files, you can start to play these media files. You can also play files from attached USB devices, your network or from the internal card reader of the EM7385.

One of the main features of the media player is the ability to play many types of video files. 'Regular' video files like DVD ISO and VIDEO_TS files are supported. Also, .MOV, .MKV, .AVI and Blu-Ray video files are supported. The EM7380 & EM7380 are also able to play 3D video files. The EM7380 and EM7385 both support Full 3D, Side-by-Side 3D and Top-Bottom 3D.

Note: The main menu represents a category manager. There are three main categories available: 'Movie', 'Music', and 'Photo'. Each category has its own icon.

- *The 'Movies' icon represents Movies category. Refer to the following image for the 'Movie' icon:*

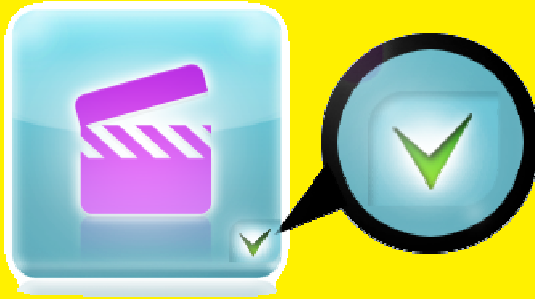


Image 5 – Movies icon.

- The 'Music' icon represents the Music category. Refer to the following image for the 'Music' icon:



Image 6 – Music icon.

- The 'Photo' icon represents the Photo category. Refer to the following image for the 'Photo' icon:



Image 7 – Photo icon.

Note: If the 'Media Library' is set to 'Off', a mark will always be placed at the different categories which indicates the different categories can be chosen.

However, If the 'Media Library is set to 'On', the marks will only be available if a USB hard disk or memory is detected (EM7385 & EM7380), or if the internal hard disk is detected (EM7385). If the 'Media Library' is set to 'On', but no devices are detected, a cross will be placed at the different categories.

This means the different categories can not be used. Also refer to the following images where the 'Media Library' is set to 'On', but no USB hard disk, USB stick or internal hard disk is detected:



Image 8 - Movies category not available (cross is present).



Image 9 - Music category not available (cross is present).



Image 10 - Photo category not available (cross is present).

Hint: Press the 'Menu' button while playing a video file to acquire the options as described in the following enumeration:



Image 11 – Menu explanation

| | |
|------------------------|--|
| Subtitle: | <i>Shows the available subtitles.</i> |
| Audio: | <i>Shows the available audio languages and other audio options.</i> |
| GOTO: | <i>Used to select a specific time frame in the movie.</i> |
| Repeat Title: | <i>Repeats the current video file.</i> |
| Repeat Off: | <i>Repeating function set to off.</i> |
| 2D: | <i>Shows the available 2D video stream.</i> |
| 3D: | <i>Shows the available 3D stream.</i> |
| Swap L & R: | <i>Swaps the 3D image from the left to the right.</i> |
| 3D Depth: | <i>Used to create more dept in the 3D streams.</i> |
| Video Setting: | <i>Settings for changing the Brightness, Contrast, Saturation and Hue.</i> |

Note: Since the 'Media Library' is set to 'Off' by default, the steps shown in this chapter will be described without the 'Media Library' option.

10.1 Playing 3D Blu-Ray ISO

The media player is able to play unprotected 3D Blu-Ray ISO's / 3D AVCHD ISO files. Use the following steps to play these ISO files.

1. Use the navigation keys to select 'Movies' and press the 'OK' button.
2. Select the source where you want to play from and press the 'OK' button.
3. Browse to the ISO file you want to play and press the 'Play' or 'OK' button after which the ISO file starts to play.
4. The media player will automatically switch to the correct 3D mode if a supported 3D video stream is detected.

Hint: Some ISO's can only display the 3D stream if the ISO is played without navigation!

The EM7385 & EM7380 can display the original 3D Blu-Ray menu if the 3D Blu-Ray has a 1.0 BR profile menu structure. The media player will automatically detect which profile is present. If the media player detects a higher profile, the media player will not be using the original BD menu's. Instead, the EM7385 & EM7380 will be using their own menus for (HD) audio and subtitles.

10.2 Playing other 3D video formats

The EM7380 and EM7385 are also able to play other 3D video formats such as 3D MKV files and 3D M2TS files.

1. Use the navigation keys to select 'Movies' and press the 'OK' button.
2. Select the source where you want to play from and press the 'OK' button.
3. Browse to the video file you want to play and press the 'Play' or 'OK' button after which the file starts to play.
4. The media player will automatically switch to the correct 3D mode if a supported 3D video stream is detected.

Hint: If the media player is playing the 3D video file, but there is no 3D effect, you need to select the correct 3D mode: Press the 'Menu' button on the remote control and choose the correct 3D mode. You can choose between '3D Simulation', '3D Side-By-Side' and '3D Top Bottom'.

Hint: Press the 'Menu' button and select the 'Depth' option to create more depth in the 3D effects!

Hint: Press the 'SUB-T' button to be able to select (more) subtitles

Note: Some MKV files do have subtitles in the MKV file itself. It is possible to add a SRT subtitle file, but then, the MKV file must not have a subtitle in the MKV itself. SRT subtitles can only be used without having the subtitles in the MKV itself. You can always put the SRT file into the MKV container using programs like 'MKVMERGE' which you can download from the internet. However, Eminent can not support these programs.

10.3 Playing 2D Blu-Ray ISO

The media player is able to play unprotected (2D) Blu-Ray ISO's / AVCHD ISO files. Use the following steps to play these ISO files.

1. Use the navigation keys to select 'Movies' and press the 'OK' button.
2. Select the source where you want to play from and press the 'OK' button.

3. Browse to the ISO file you want to play and press the 'Play' or 'OK' button after which the ISO file starts to play.

The EM7385 & EM7380 can display the original Blu-Ray menu if the Blu-Ray has a 1.0 BR profile menu structure. The media player will automatically detect which profile is present. If the media player detects a higher profile, the media player will not be using the original BD menu's. Instead, the EM7385 & EM7380 are both using their own menus for (HD) audio and subtitles.

10.4 Playing DVD

The media player is able to play DVD files and DVD ISO's. DVD files made by yourself can be played without any problems. Also, the EM7385 & EM7380 have full DVD menu support.

The EM7380 and EM7385 do not play commercial DVD's which have CSS security. However, DVD backups without security can be played.

10.5 DVD ISO

1. Use the navigation keys to select 'Movies' and press the 'OK' button.
2. Select the source where you want to play from and press the 'OK' button.
3. Browse to the DVD ISO file you want to play and press the 'Play' button after which the DVD starts to play with full menu support.

10.6 DVD VIDEO_TS

1. Use the navigation keys to select 'Movies' and press the 'OK' button.
2. Select the source where you want to play from and press the 'OK' button.
3. Browse to the DVD folder you want to play and press the 'Play' button after which the DVD starts to play with full menu support.

10.7 Play other video formats

Besides the already explained video formats, the media player is able to play many other video formats, such as M2TS, MPEG2 AVI etc.

1. Use the navigation keys to select 'Movies' and press the 'OK' button.
2. Select the source where you want to play from and press the 'OK' button.
3. Browse to the file you want to play and press the 'Play' button after which the file starts to play.

Hint: Press the 'SUB-T' button to be able to select subtitles

Note: Some MKV files do have subtitles in the MKV file itself. It is possible to add a SRT subtitle file, but then, the MKV file must not have a subtitle in the MKV itself. SRT subtitles can only be used without having the subtitles in the MKV itself. You can

always put the SRT file into the MKV container using programs like 'MKVMERGE' which you can download from the internet. However, Eminent can not support these programs.

10.8 Playing music and other audio files

1. Use the navigation keys to select 'Music' and press the 'OK' button.
2. Select the source where you want to play from and press the 'OK' button.
3. Browse to the file you want to play and press the 'Play' button after which the file starts to play.

Hint: Press the 'Menu' button while playing a music file to acquire the options as described in the following enumeration:

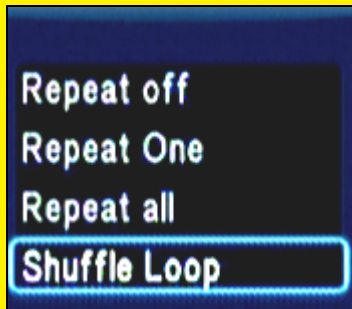


Image 12 – Music menu

- Repeat off:** Repeating the current played file is set to off.
- Repeat One:** The current played file will be repeated once.
- Repeat all:** All played files will be repeated.
- Shuffle Loop:** Shuffles the files. When 'Shuffle Loop' is selected and the 'Next' button is selected, the available audio files will be played randomly.

10.9 Playing photos and other images

1. Use the navigation keys to select 'Photo' and press the 'OK' button.
2. Select the source where you want to play from and press the 'OK' button.
3. Browse to the file you want to play and press the 'Play' button after which the file starts to play.

Hint: Press the 'Menu' button while playing an image file to acquire the options as described in the following enumeration:



Image 13 – Photo menu

- Slide Timing:** Select 'Slide Timing' and press the 'OK' button. Select the amount of time an image will be visible, for example: '2 Seconds' and press the 'OK' button.
- Slide Transition:** Select 'Slide Transition'. Select the effect you want to use while using the slide show. If want to use all possible effects, you can choose 'All Effect Shuffle' and press the 'OK' button.
- Repeat off:** When 'Repeat off' is selected, the played file will not be repeated.
- Repeat all:** When 'Repeat all' is selected, all available image files will be repeated.
- Shuffle Loop:** When 'Shuffle Loop' is selected, the available image files will be played randomly.
- Background Music:** If you want to hear background music during the slide show, select 'Background Music' and press the 'OK' button. If you want to hear music which is located in a specific album, select 'Select Music' and press the 'OK' button. Select the album and press the 'OK' button. Select the music file you want to start with and press the 'OK' button.
- Video Setting:** When 'Video Setting' is selected, you can change several video settings such 'Brightness', 'Contrast', 'Saturation' and 'Hue'.

11.0 Using Movie info, Cover art and a video wall

The EM7385 & EM7380 have the possibility to use movie info and cover art. Using the movie info function, cover art with detailed information (Duration, genre, key players, length of the movie etc) about the current movie can be shown before you start video

playback. If you use the cover art function, the covers of the movie can be shown before you start the playback of a movie.

Hint: For best results, you need to use the 'ThumbGen' program. Using this program, it is possible to retrieve the detailed information about the movies from internet databases such as IMDB.com. Also, this program is able to retrieve covers from the internet.

11.1 Using the ThumbGen program

Note: The ThumbGen version we have been using is version 1.2.10.0

1. When using the EM7385 and you have movies on the hard disk of the media player, you need to connect the EM7385 to your computer using the supplied USB cable. The computer will recognize the media player as an external USB hard disk. If you are using an USB hard disk where movies are stored on, you need to connect the external USB hard disk to your computer.
2. Make sure the movies on the hard disk are placed in a folder. Each movie needs to be in a separate subfolder.
3. Download the 'ThumbGen' program from the internet. The current download link is: <http://thumbgen.org/>
4. Unpack the program.
5. Open the program after which the main menu of the program appears, as shown in the following image:

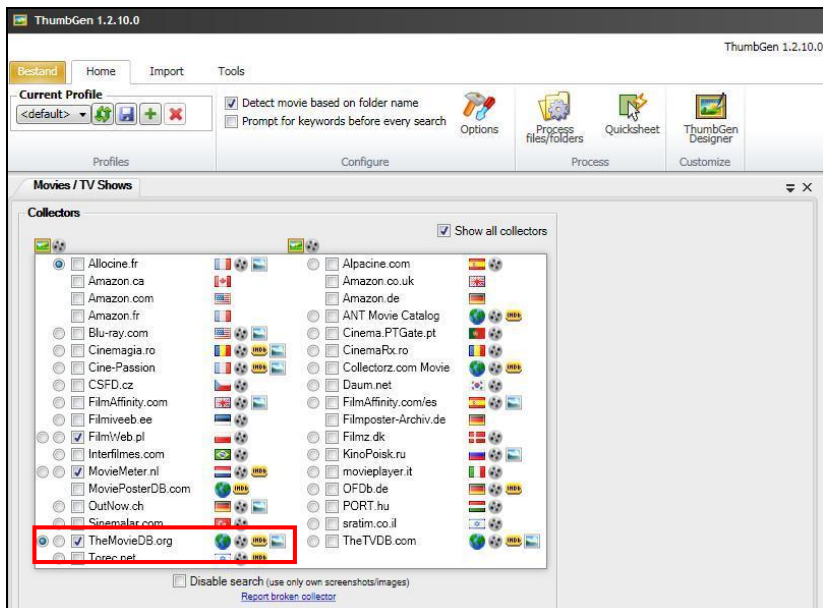


Image 14 – ThumbGen

6. In this case, we have selected a dutch database for retrieving the (detailed) information and cover art.
7. Click 'Option' after which the Option page appears. On this option page you need to select which information needs to be shown. We only want the thumbnail and the main movie sheet to be added, as shown in the following image:

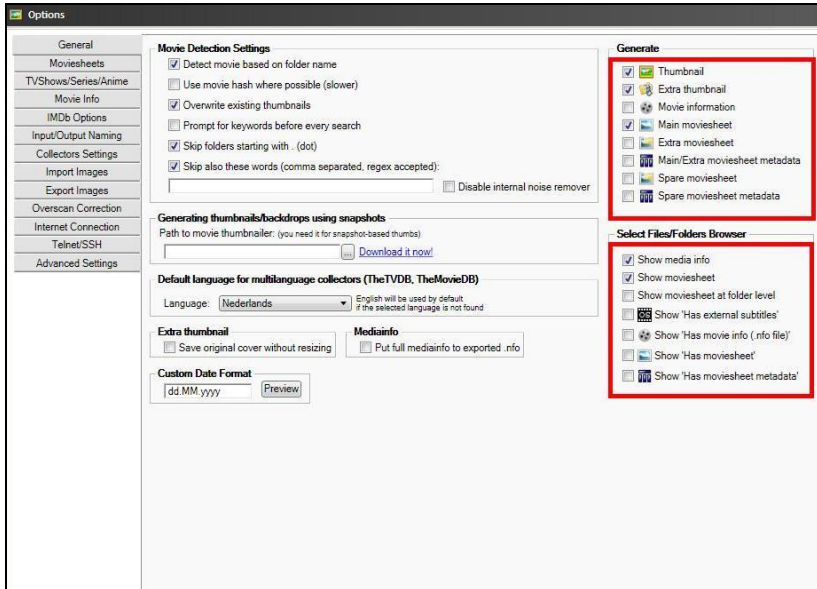


Image 15 – ThumbGen

8. Click 'OK' at the bottom of the page after which the main page will be shown again.
9. Click 'Options' again.
10. Click 'Input/Output Naming'. At 'Thumbnail', you need to make sure the output is '\$M\folder'. At 'Main moviesheet', you need to make sure the output is '\$M\poster' and 'Extra Thumbnail' needs to be '\$M\\$', as shown in the following image:

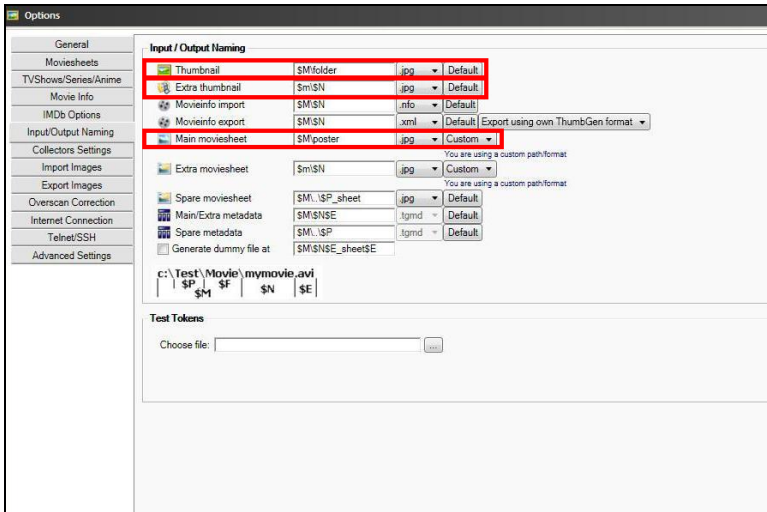


Image 16 – ThumbGen

11. Click 'OK' at the bottom of the page after which the main page appears.
12. Now click the plus sign at 'Current Profile' after which the following image appears:

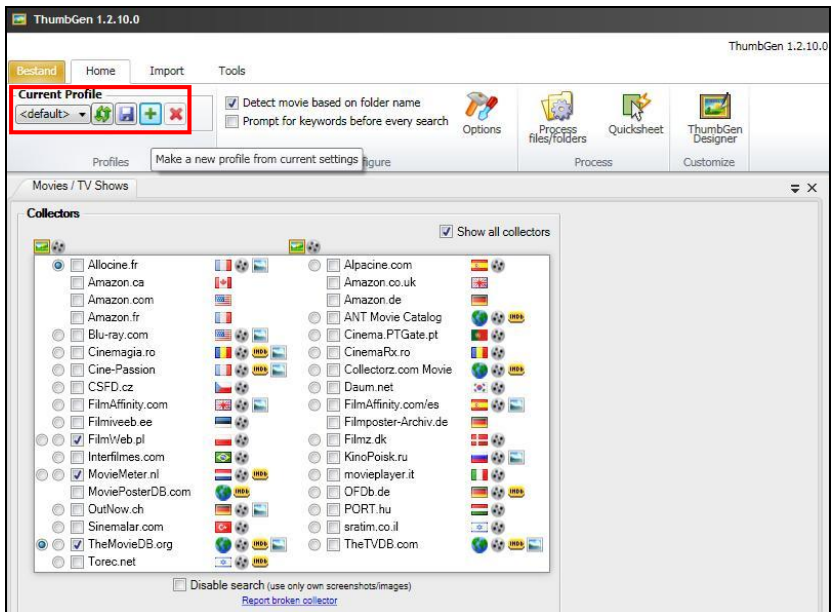


Image 17 – ThumbGen

13. Save the current profile. For example: You can save this profile as 'Eminent' as shown in the following image:

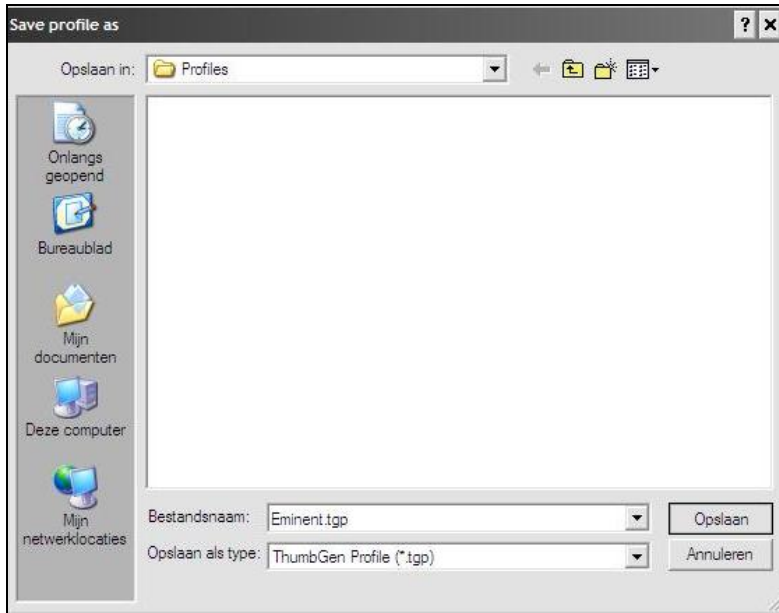


Image 18 – ThumbGen

14. Click 'Save' after which the main page appears.
15. At 'Current Profile', the saved profile is present, as shown in the following image:

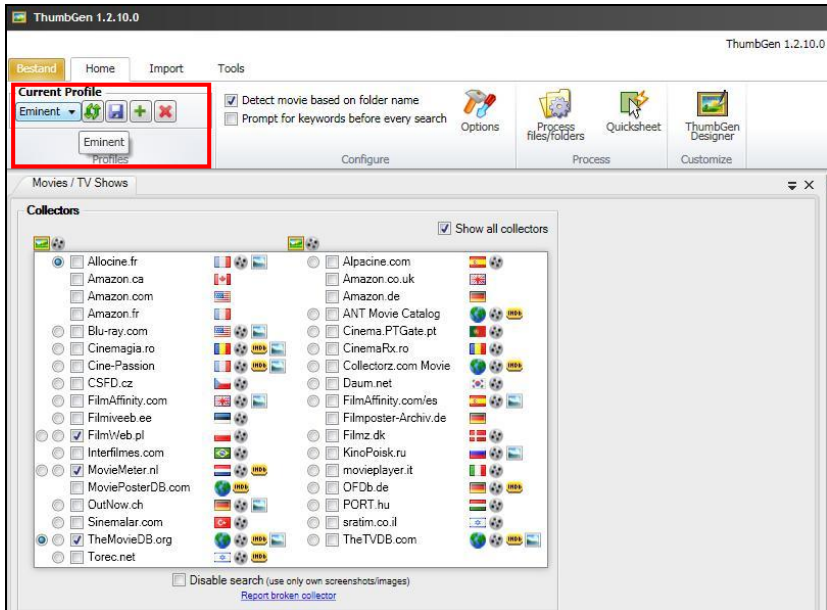


Image 19 – ThumbGen

16. Now click 'Process Files/folders' after which a screen appears with the current drives.
17. Select the correct drive and then the folder (with the subfolders) where the movies are stored. Click the name of the folder. If correct, the subfolders are selected automatically.
18. Now click the 'Automatic Mode' button after which the program starts to process the movies. In the 'Automatic Mode', the program may ask you to select a title if the program does not know for sure if the name of the movie(s) correspond with the name(s) in the database.
19. A progress bar will be shown at the bottom of the screen. Once the program is done, you can close the program.
20. Now disconnect the media player or external USB hard disk from your computer by right-clicking the USB icon in the taskbar and click 'Safely remove hardware'. You need to reconnect the USB hard disk to the media player again. You can also choose to restart the media player.
21. Wait until the media player has been started or restart the media player manually.

11.2 Showing Movie info

1. Make sure the media player is started. Also make sure the 'Media Library' is set to 'Off'. The Media Library can be found using 'Setup→MISC→Media Library'.
2. Select 'File Manager' and press the 'OK' button.
3. Select the source where you want to play from and press the 'OK' button.

4. Browse to the folder where the movies are stored in and press the 'OK' button. If correct, the available subfolders of the movies are shown.
5. Press the 'Blue' button on the remote control after which the movie info of the first movie in the list will be shown.
6. You can use the navigation buttons on the remote control to browse through all available movie info's.
7. Once you have chosen the movie you want to play, you need to press the 'OK' button on the remote control (while watching movie info) to start the specific movie.

Hint : Movie info is also available when using the 'Movie' icon instead of using the 'File Manager' icon..

11.3 Showing Cover art

1. Make sure the media player is started. Also make sure the 'Media Library' is set to 'Off'. The Media Library can be found using 'Setup→MISC→Media Library'.
2. Select 'File Manager' and press the 'OK' button.
3. Select the source where you want to play from and press the 'OK' button.
4. Browse to the folder where the movies are stored in and press the 'OK' button.
5. Select a movie folder and press the 'OK' button.
6. Press the 'Yellow' button on the remote control after which the cover art of the movie will be shown.
7. Press the 'OK' button after which the movie info will be shown.
8. Press the 'OK' button on the remote control (while watching movie info) to start the movie.

Hint : Cover art is also available when using the 'Movie' icon instead of using the 'File Manager' icon.

11.4 Using the Video Wall

1. Make sure the media player is started. Also make sure the 'Media Library' is set to 'Off'. The Media Library can be found using 'Setup→MISC→Media Library'.
2. Select 'File Manager' and press the 'OK' button.
3. Select the source where you want to play from and press the 'OK' button.
4. Browse to the folder where the movies are stored in and press the 'OK' button. If correct, the available subfolders of the movies are shown.
5. Press the 'Yellow' button on the remote control after which the video wall shows all available covers.
6. You can use the navigation buttons on the remote control to browse through all available movie covers.
7. Press the 'OK' button after which the movie info will be shown.
8. Press the 'OK' button on the remote control (while watching movie info) to start the specific movie.

Hint : The video wall is also available when using the 'Movie' icon instead of using the 'File Manager' icon.

12.0 Playing media through the network

The media player is equipped with a UPnP and Samba client. This way, the media player will be able to stream media from a UPnP server or Samba server through your network. Windows XP and Vista are usually equipped with Windows Media Player. Since Windows Media Player 11 is the latest available version for these Windows versions, we will explain this version for Windows XP and Vista. Also, Windows Media Player 12 is mentioned as this is the default Media Player version in Windows 7.

12.1 Setting up Windows Media Player11 as UPnP server (Windows XP and Vista)

Your computer does not share media by default. You will have to install a UPnP media server on your computer to add this functionality. When using Media Player 11, you can use the built-in UPnP media service of this program. If you enable this option, your media player can access the music library on your computer. Follow the steps below to enable this option:

1. Click 'Start'.
2. Click 'Programs'.
3. Click 'Windows Media Player'.
4. Click 'Tools', then click 'Options'. The following screen will be displayed:

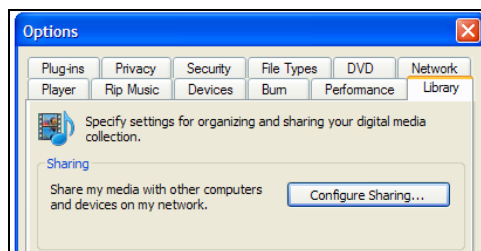


Image 20 – Media Player 11

5. Go to the 'Library' tab in the left upper corner of the options window.
6. Now click 'Configure sharing'.
7. Check the "Share my media" checkbox and click OK.

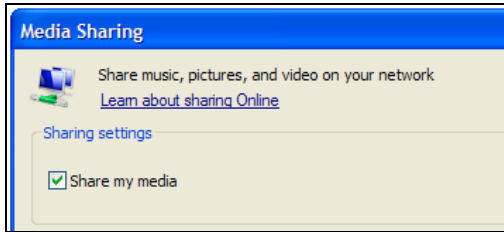


Image 21 – Media Player 11

8. A list with detected devices will appear within a few seconds.
9. Click the name of your media player.
10. Click 'Allow'.
11. Click 'Ok'.
12. Click 'Ok'.
13. All files in the media library of Windows Media Player will be shared with your media player from now on. The media library will be accessible using the remote control and screen of the media player.

Note: Steps above are taken with Windows Media Player 11, available for download at <http://www.microsoft.com/windows/windowsmedia/player/>

12.2 Setting up Windows Media Player 12 as UPnP server (Windows 7)

Windows 7 is usually equipped with Windows Media Player 12. If streaming does not succeed directly, you can refer to the help function in Windows Media Player 12. Windows Media Player 12 has an extensive help function which can be used as a guide to setup your computer as a UPnP media server.

1. Open Windows Media player 12.
2. If Windows Media Player starts in the 'Now Playing' mode, click the 'Switch to Library' button located in the upper right corner of Windows Media Player.
3. Click 'Stream' and click 'Turn on home media streaming'.
4. Turn on 'Home Media Streaming' at 'Media streaming options'.

The steps above are usually sufficient to stream using the UPnP. If this does not succeed, please visit the Microsoft website for more information.

Hint: Multiple other programs can turn your computer into a UPnP media server. Some of these programs are available for download, like tversity (www.tversity.com) or Twonkymedia (www.twonkyvision.de).

12.3 Play media through the network (UPnP)

1. Use the navigation keys to select 'Manager' and press the 'OK' button.

2. Press the 'Menu' button and select the category. If you want to play a video file using UPnP, select 'Movies' and press the 'OK' button.
3. Select 'UPNP' and press the 'OK' button after which the available UPnP server(s) will be shown.
4. Select the UPnP server you want to use and press the 'OK' button.
5. If necessary, select the correct folder and press the 'OK' button.
6. Now select the file you want to play and press the 'OK' button. The file starts to play.

Note: Although UPnP is easy to use, it has some flaws. If your video files are not recognized, or you want to play DVD's or video files with separate subtitles files, it is recommended to make use of Samba, also known as shared folders.

12.4 Playing media through your network (Samba)

1. Use the navigation keys to select 'Manager' and press the 'OK' button.
2. Press the 'Menu' button and select the category. If you want to play a video file using Samba, select 'Movies' and press the 'OK' button
3. Select 'Network' and press the 'OK' button after which the workgroup(s) will be shown.
4. Select the correct work group and press the 'OK' button. The available Samba server(s) will be shown.
5. Select the Samba server you want to use and press the 'OK' button. If you need to login enter the username and password and press the 'OK' button.
6. If necessary, select the correct folder and press the 'OK' button.
7. Now select the file you want to play and press the 'OK' button. The file starts to play.

12.5 Playing media through your network using DLNA DMR

The media player also has the option to function as a DLNA slave. This means the media player functions as a digital media receiver. Using this function, it is not necessary to turn on your television to play media. For example: If your media player is connected to your receiver, you can actually control the media player using another device which has a DLNA control point function. This way, you will be able to give a command to the media player which lets the media player play your music without the need to turn on your television.

Many devices these days can be used as control point. Windows Media player is able to do so, also are many smart phones such as Apples iPhone and Android smart phones. As example we will explain how to use the DLNA DMR function with Windows Media Player 12. Windows Media Player 12 needs to be set as a UPnP server (see chapter 12.2)

1. The first steps need to be performed on your media player: Use the navigation keys to select 'Setup' and press the 'OK' button.
2. Select 'System'.
3. Select 'DLNA Renderer' and make sure this option is set to 'On'.
4. Open Windows Media Player 12 on your computer.
5. If Windows Media Player starts in the 'Now Playing' mode, click the 'Switch to Library' button located in the upper right corner of Windows Media Player.
6. Right-click a media file, for example a MP3 file and choose 'Play to' and then click the name of the media player.
7. Within a few seconds, the selected file will be played on the media player.

It is not necessary to have the media on the same device as the control point. Your computer or smart phone can also act as a control point even if your media is stored on another device such as a NAS and is also connected within the same network.

12.6 Play media through your network using iMediaShare

You can also play media through your network by using the iMediaShare software. Using this software, it will become possible to stream video's from applications such as YouTube to your EM7385 or EM7380 using your smartphone or tablet (iOS and Android systems).

These applications are preset applications within the iMediaShare software. In the following chapter, we have been using iMediaShare version 4.2 on an Ipad3 with iOS 5.1.

1. Visit Apple's 'Appstore', or, in case you have an Android device, visit 'Google's Play store'.
2. Search for the (free) iMediaShare App.
3. Download and install the App on your device.
4. Open iMediaShare.
5. Select an application from the list, and press the chosen application to open the chosen application.
6. If you choose to play an item (a video stream), the iMediaShare software will ask you where to stream to. Choose your EM7385 or EM7380 (The EM7385 & EM7380 will be recognizable since it has the network name you gave the media player in chapter 7.4.4).
7. The media player will show the stream on your television.

Note: The iMediaShare software is provided by a Third Party. This means Eminent is not responsible for the functioning of the App. If you experience problems with the iMediaShare software, you need to refer to the manufacturer of the software.

13.0 Android

Hint: Connect the EM3140 Wireless Mini Keyboard with built-in Touchpad and Laser to navigate through the Android menu and to control the app!

For optimum performance and stability with the Android feature, it is advisable to use an internal hard disk in the EM7385 or connect a USB stick or USB hard disk to the EM7380.

13.1 Using Android

The EM7385 & EM7380 can also make use of an Android function. Using this function, you will be able to install and use Android Apps.

1. Use the navigation buttons to go to 'Android Apps' and press the 'OK' button.
2. The Android option will be started. It is possible the notification 'Android booting' appears*.
3. Once the Android option is started, a new screen will appear automatically and a few pre-installed apps Android apps will be available.
4. If you want to start an Android app, you need to select the app you want to start. Press the 'OK' button on the remote control to start the app, or in case you are using the EM3140, click the app using the left touchpad button.

** Note: You can enable the Android option with the start-up of the media player. This way, the Android option will always be started the moment the media player has completed booting. Go to 'Setup→MISC→Boot with Android' and set this to 'On'.*

13.2 Installing Android apps

It is also possible to install Android apps by yourself. In the following steps, we will explain how to install an Android app.

1. Search the internet for Android apps with so called 'APK's'. You can also visit the Eminent website where Android apps will be downloadable. An APK is an Android installer.
2. Place the APK file on a USB memory stick and place the USB memory stick in a free USB port of the EM7385 or EM7380.
3. Use the navigation keys to go to 'Android' and press the 'OK' button.
4. Go to 'OI File Manager' and press the 'OK' button, or in case you are using the EM3140, click the 'OI File Manager' using the left touchpad button.
5. Select 'mnt' and press the 'OK' button or click the touchpad button once.
6. Select 'usbmounts' and press the 'OK' button or click the left touchpad button once.
7. Select the USB stick (SDA1 or SDB1 etc)
8. Browse to the APK file you want to install and press the 'OK' button or click the left touchpad button once.
9. Select install and press the 'OK' button or click the left touchpad button once, after which the Android app will be installed.
10. Once the Android app has been installed, the notification 'Application installed' will be shown.

11. Select 'Open' and press the 'OK' button or click the left touchpad button once to start the Application.

Note: Applications installed by yourself are also visible in the main menu of the Android option!

13.3 Using the default Android items

13.3.1 Browser

Hint: We recommend to use the EM3140 Wireless Mini Keyboard with built-in Touchpad and Laser Pointer to control the apps!

1. Select the 'Browser' app using the remote control and press the 'OK' button, or select the 'Browser' app using the touchpad of the EM3140 and click the left touchpad button to open the app after which the webbrowser automatically starts.
2. Select the address bar at the top of the menu and press the 'OK' button or click the left touchpad button after which a virtual keyboard appears.
3. Enter the name of the website you want to visit, for example: www.eminent-online.com and then select the onscreen 'Enter' button and press the 'OK' button on the remote control or click the left touchpad button after which the web page will be loaded.
4. Use the navigation keys of the remote control or use the touchpad to select an item on the web page and press the 'OK' button to load the item. You can also use the mouse to browse the webpage and to click items on the webpage.

Hint: When using the virtual keyboard, select the 'Symbol' icon to add symbols to the text. Use the 'Lower or Upper' icon to switch between upper case and lower case alphabet.

Hint: When using a mouse, click the 'Bookmarks' tab to add the website to the favorite list. If you want to rename the bookmark, then click the icon which is listed with the 'Add' and bookmark icon. If you want, you can also rename the bookmark and change the location. Click the onscreen 'OK' button to save the changes.

Hint: When using a mouse, click 'Bookmark icon and then the 'Most visited' icon to see which websites have been visited the most or click 'History' to check the browser history. Press the scroll wheel on the mouse to be able to clear the history of the web browser!

13.3.2 OI File Manager

The OI File Manager enables you to browse the connected USB device and install Android APK's. These steps are described in chapter 13.2.

13.3.3 Search

1. Select the 'Search' app using the remote control and press the 'OK' button, or select the 'Search' app using the touchpad of the EM3140 and click the left touchpad button to open the app after which the 'Search' app automatically starts.
2. A new screen opens which shows a virtual keyboard, and in the top of the screen a Google search bar is shown.
3. Make sure the language is set to 'English'. If correct, an 'ENG' tab is present in the virtual keyboard. If another language tab is present, you need to make sure the 'ENG' tab is selected.
4. Fill out the item you want to search, select the onscreen 'Enter' button and press the 'OK' button on the remote control or press the 'Enter' button on the EM3140.
5. The search results will be shown.

Hint: When using the virtual keyboard, select the 'Symbol' icon to add symbols to the text. Use the 'Lower or Upper' icon to switch between upper case and lower case alphabet.

13.3.4 RT Media Center

1. Select the 'RT Media Center' app using the remote control and press the 'OK' button, or select the 'RT Media Center' app using the touchpad of the EM3140 and click the left touchpad button to open the app after which the 'RT Media Center' app automatically starts.
2. You will see three main categories: 'Images', 'Videos', 'Audios'. Each item represents a specific category:
 - 'Images' shows the images which are present on the connected USB device or internal hard disk (EM7385).
 - 'Videos' shows the video files which are present on the connected USB device or internal hard disk (EM7385).
 - 'Audios' shows the audio files which are present on the connected USB device or internal hard disk (EM7385).
3. If you want to play an image file, movie file or audio file, you can select the correct category and press the 'OK' button or click the left touchpad button.
4. The category will be opened. If desired, you can make an extra choice depending on the category and then play the file(s).

13.3.5 Settings

The 'Settings' app allows you to view the more advanced options such as '(un)known sources', 'Manage applications', 'Running services' and 'Development'.

14.0 Stream online media using the (web)apps

The EM7385 & EM7380 have a fully functional web browser with HTML 5 support and fully functional video and audio tags.

14.1 Using the web browser

Hint: We recommend to use the EM3140 Wireless Mini Keyboard with built-in Touchpad and Laser Pointer to control the apps for optimum usability.

1. Use the navigation buttons to go to select 'Web Browser' and press the 'OK' button.
2. Press the 'Menu' button after which the browser menu opens.
3. Select the address bar at the top of the menu and press the 'OK' button. You will be guided to the virtual keyboard.
4. Enter the name of the website you want to visit, for example: www.eminent-online.com and then press the 'Play' button twice to open the webpage.
5. Press the red button on the remote control to be able to click links on the webpage, you can also use the mouse to click an item.

Hint: When using the virtual keyboard, press the red button to be able to add symbols to the text. Use the 'Time Seek' button to switch between upper case and lower case alphabet.

Hint: Use the 'Bookmarks' tab to add the website to the favorite list.

14.2 Buddy Link

The EM7385 & EM7380 also have the popular 'Buddy Link' option. Using this option you will be able to communicate with other people who have a Buddy Link or Google account. You can send text messages to other people using the media player.

Hint: Connect the EM3140 Wireless Mini Keyboard with built-in Touchpad and Laser to simplify typing your messages!

1. Use the navigation keys to select 'Apps' and press the 'OK' button.
2. Select the app you want to use, for example 'Buddy Link' and press the 'OK' button.
3. Sign in with the username and password of your Google account. A list of friends will be shown. You can now send messages to (online) friends.

Note: The amount of available apps can vary. The available apps are offered by third parties. Eminent can not guarantee the working of an app if a third party decides to make changes to an app or decides to stop supporting this app.

15.0 Using third Party Apps

15.1 Explanation of the Third Party Apps and other useful information

Note: The number of available Apps can vary. The Apps are provided by third parties. The functioning of the available Apps solely depends on these third parties. If a third party decides to make changes to a certain App or decides to stop supporting Apps, Eminent cannot guarantee the continued functioning of the Apps!

The Eminent Third Party Apps is the place to search for Apps for your Eminent HD Media Player!

No difficulties with installing these Apps: Use your computer and just click your favorite App. By clicking an App, the App will be installed on your Eminent Third Party Apps account. Once installed, you can use your Media Player to play the installed Apps. This way, many Apps will be within your reach.

By default, there are many Apps available for your HD Media Player. By using the Eminent Third Party Apps, you can even create your own Apps and share these Apps with other users of the Eminent Third Party Apps. The more Apps people create, the more Apps will become available in the Eminent Third Party Apps.

15.1.2 Eminent Open Source Forum

Eminent Europe B.V. has a large community forum where visitors can help each other with problems and issues. It is not a replacement for our support desk, but is intended to be a great place to learn about new developments and to help out users.

The Eminent Open Source Forum can be found at:
<http://opensource.eminent-online.com>

15.1.3 Support

When experiencing issues which cannot be solved using the Eminent Open Source Forum, you can contact the Eminent Helpdesk by e-mail:

You can fill out the contact form on the Eminent website. This form can be found at:
www.eminent-online.com/contact

15.1.4 Developer account

If you wish to develop Apps for the Eminent Third Party Apps, Eminent can change your user account into a Developer account which has more privileges. As developer accounts have access to system resources to introduce system-wide Apps, we might require to see your own developed work prior to elevating your accounts' privileges. If you do not agree, Developer accounts will not be supplied. Potential developers can contact us using the Open Source Forum or by e-mail using: support@eminent-online.com with subject: 'Developers Account Eminent Third Party Apps'.

15.2 Using the Third Party Apps

Before you can use the Eminent Third Party Apps, your Media Player needs to have internet access. The Media Player needs to be able to use the on-board Apps without problems. For example: The Facebook function needs to function without any problem.

The use of HD streams require a fast internet connection with at least 8Mbit downstream. Please check the speed of your internet connection, or contact your Internet Service Provider for more details.

15.3 Registering an account

Before you can use the Eminent Third Party Apps functionality, you need to register for an account (confirmation is needed). You can create an account using your computer. You can create an account at any time.

1. Open your computer's web browser: For Example: Internet Explorer, Firefox or Safari.
2. Type 'http://thirdparty.eminent-online.com' in the address bar of the web browser and press the 'Enter' key on your keyboard.
3. Click 'Create new account'.
4. Select your language.
5. Enter a valid e-mail address.
6. Enter your desired password.
7. Confirm your desired password.
8. Read the (disclaimer) text beneath 'Conditions'.
9. Once you have read the text, you need to mark the checkbox 'I agree with...'
10. Click on 'Create an account'. You will be notified of creation the account. A confirmation e-mail will be sent to the e-mail address you have entered.
11. Check your e-mail for the account confirmation.
12. Click on the link in the confirmation e-mail to confirm the account creation.

15.4 Registering your player

1. Make sure your Media Player has started, and has internet connectivity.
2. Make sure you are in the main menu and select 'Apps'. Press the 'OK' button on the remote control.
3. A screen with icons appears.
4. Use the remote control to select the '3rd Party Apps' icon and press the 'OK' button on the remote control.
5. Select '3rd Party Apps' and press the 'OK' button on the remote control.
6. Use the remote control to select your preferred language and press the 'OK' button on the remote control.
7. Pre-registration should now start.
8. A confirmation message appears which indicates pre-registration has succeeded.

9. Press the 'OK' button on the remote control to return to the previous screen.

15.5 Adding a Media Player to your account

Now the Media Player has been pre-registered, the Media Player can be added to your account.

1. Open your computer's web browser: For Example: Internet Explorer, Firefox or Safari.
2. Type 'http://thirdparty.eminent-online.com' in the address bar of the web browser and press the 'Enter' key on your keyboard.
3. Enter your login details (username and password) and click the 'Sign In' button.
4. The main page appears. You are now logged in to your account where Apps can be managed.
5. Click on 'My Media Players' in the top right corner of the web page.
6. At the 'Action' field, the text: 'Register this Media Player' is shown.
7. Click on 'Register this Media Player' to register your Media Player to your account.
8. A confirmation message appears. Click 'Back' to return to the previous screen.

The initial setup is now complete. If you want to quickly add an App, please proceed with chapter 15.7

15.6 Folders and subfolder

Apps can be grouped together and placed into folders as you please. You can also create subfolders up to two levels. The first step to do so, is by creating a folder, by following the steps below.

1. Click on 'My Apps' in the top right corner of the web page.
2. Your App list will appear. At first usage this list will appear empty.
3. Click 'Add Folder'.
4. Enter the name for your folder at the 'Name' field. For example 'Streaming Radio'.
5. Choose a (sub) folder to store the folder in. If subfolders are not available, select 'Root Folder'.
6. If needed, you can enable PIN protection (also see chapter 15.8) for this specific folder and all Apps or subfolders within this folder. Enable the 'Secured with PIN code' checkbox to do so.
7. Click on 'Create' after which the folder will be created.
8. The created folder will be placed on the first page of your App list.

You can now use the 'Streaming Radio' as a target folder when subscribing Apps from the 'Search through available Apps' list.

Due to system limitations, folders can not be re-positioned up/down the App list. Folders will always be positioned at the top of the list.

15.7 Adding an App to your account

Now your player has been linked to your account, you can start to add available Apps. Use the following steps to add an App to your Media Player:

1. Click 'My Apps' in the top right corner of the web page.
2. Your App list will appear. This list will be empty at first besides any folders you have already created.
3. Click 'Search through available Apps' at the top of your App list.
4. A list of available Apps will be shown on the screen.
5. Search for Apps you want to add and place a mark at 'Subscribe'. You also need to place a mark at the 'Disclaimer'. Each App has its own disclaimer.
6. Select the folder you want to store the App in at 'Folder to store in'.
7. Adult-rated Apps have two disclaimers. Each disclaimer needs to be marked.
8. Click the 'Subscribe' button to add the selected Apps to your account.
9. A confirmation appears which indicates the added Apps can no be used on your Media Player.
10. Click 'Back' to return to the previous screen.

Any Apps which have not been added to the chosen folder can be unsubscribed and be added again to the correct folder.

By using the 'App Online' icon on your television, the added Apps can be used.

Note: The App has more advanced functions like sorting your Apps and pin protection. These functions will be explained in chapter 15.8.

15.8 Advanced functions

15.8.1 Sorting Apps

Apps can be sorted to your liking. You will need to be logged into the Eminent Third Party Apps using your computer. Use the following steps to sort your Apps:

1. Click 'My Apps' in the top right corner of the web page.
2. Your App list will appear.
3. Use the mouse indicator to select an App.
4. A number of icons will be shown besides the Apps. Use the mouse indicator to view the explanation of the icons. Also see the following image:



Image 26 – Third party apps

Note: If you have developers privileges, more icons may appear

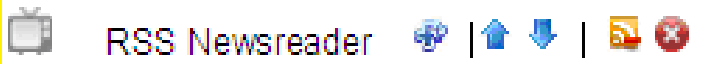


Image 26 – Third party apps

5. The icon on the left can be used to rate an App, and will be explained in section 15.8.2.
6. The second and third icon will change the position of the App on-screen. When positioning Apps using your computer, the Apps will also be shown accordingly on your television.
7. The fourth icon can be used to unsubscribe an App.
8. If an App is owned & created by yourself (developer privileges), the fifth icon will remove it completely from the Eminent Third Party Apps and from your list. Deleting Apps which have been created by yourself are also not visible anymore for other Eminent Third Party Apps users.
9. Folders can not be moved. Folders can only be edited or deleted.

15.8.2 Rating Apps

1. Click on 'My Apps' in the top right corner of the web page.
2. Your App list will appear.
3. A number of icons will appear besides the Apps:

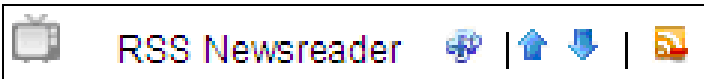


Image 27 – Third party apps

4. To give an App a '++' rate, click the left icon.
5. A '++!' indication will appear on the right side, which indicates you have rated the App.

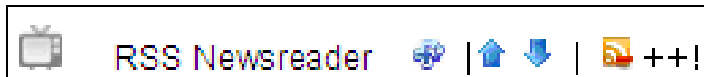


Image 28 – Third party apps

6. Please note you cannot un-rate the App, so please only rate Apps after reviewing them for some time.

15.8.3 Pin security

Your folders and Apps can be secured by using a PIN code. This PIN code is a 'global' code and once set, this PIN code will be used for all secured Apps & folders. In order to use the PIN code:

1. Click 'Profile' in the top right corner of the web page.
2. Your profile will appear.

3. Click the 'Modify' button at 'Personal Details'.
4. Enter or change the PIN code at the 'PIN' field.
5. Click 'Save' to save the PIN code and to return to the main menu.

If a folder or App is secured and this folder or App is opened on your television, the PIN code needs to be filled in. If this question appears, press the 'OK' button to enter the PIN code.

The PIN code security can be used:

- *When adding a subscription to an App*
- *When creating a new App**
- *When creating a new folder, or editing an existing one.*
- *When adding or editing a stream*

**Developer rights are required to create new system-wide Apps. Your own Apps/Streams/folders are only visible in your own players which are registered on this specific account.*

15.8.4 Adding custom streams

The Eminent Third Party Apps has an 'Add a Stream' option which allows you to quickly add suited Video/Audio streams or URLs, and turn them into 'Apps' which can easily be added to your App List.

If you want to add a stream, you need to make sure a valid URL-Address has been used. If not, the App will not function. An invalid stream will result in a blue screen with an error notification. (URL's are not a simple Web-Address. An URL is an exact address which is used by the specific website).

Retrieving the correct stream (Address) requires some internet streaming knowledge.

If you experience any issues, or you do not know how to retrieve the correct URL, you can refer to the Eminent Open Source forum for possible solutions or support from other users.

15.8.5 Using a .PLS file to add a radio stream

There are countless sources where streams can be found. For Example: By using 'Shoutcast'. Shoutcast uses so called .PLS files. By editing .PLS files, valid stream addresses and URL's can be retrieved. We will explain how to retrieve a stream address using .PLS files which can be found using Shoutcast and how to add this stream address to your own stream.

1. Open your computer's web browser (For example: Internet Explorer, Mozilla Firefox,Safari).

2. Fill in the following: 'www.shoutcast.com' and press the 'Enter' key on your keyboard.
3. The Shoutcast page will be shown.
4. Click 'Radiogenre' at the left side of the screen. For example: Click 'Pop'.
5. Now choose a subgenre. For example: 'Top 40' and click 'Top 40' using the left mouse button.
6. Available radio stations will be shown at the right side of the screen.
7. Right-click the name of a radio station (For example: Jack FM – All hit Radio) and choose 'Save as'.
8. Choose a location where you want to save the file (.PLS) to (For Example: Your desktop) and click 'Save'.
9. Go to your desktop and right-click the saved .PLS file and choose 'Open with wordpad' after which the .PLS file will be opened.
10. You will see a text summary with at least one web address. For example: You will see: <http://80.237.210.91:80> (write down this address or copy this address).
11. Login to the Eminent Third Party Apps using your web browser.
12. Click 'My Apps' at top right corner of the web page.
13. Click 'Add a Stream'.
14. At 'Name' you can fill out the name of the station. You may also fill out a random name.
15. 'SWF location' remains empty.
16. At 'Stream location' you can fill out the web address you have written down, or you can copy the web address to this rule.
17. Click 'Save'. You have now added a 'stream'.
18. The added stream is now visible at the App list.
19. If you want to play the added stream, go to the '3rd Party Apps' icon using your Media Player. Attention: When playing a radio stream, the screen of your television will remain totally black. Only sound is hearable.

Streams which have been added by yourself can not be placed in folders or subfolders. Streams which have been created by yourself will always be placed in de root of the 'My Apps' page!

** You can also use another text editor to open a .PLS file. Since most Windows computers have wordpad installed by default, Wordpad has been chosen as an example.*

15.8.6 Adding a video stream

It is also possible to add a video stream. Use the following steps to add a video stream. In the following example we are using the website: FreetuxTV WebTV Manager.

1. Open your computer's web browser (For example: Internet Explorer, Mozilla Firefox, Safari).
2. Fill out the following: 'http://freetuxtv.eric-beuque.com/webtv-manager/site/index' and press the 'Enter' key on your keyboard.

3. You will see a number at 'WebTV'. Also, several languages are selectable. If the number is '5' shown, it means 5 video streams are available at the specific language. Click this number.
4. The available video streams will be shown.
5. Select the link or web address at the name of the stream and write down this address or copy this address. You can also click 'View details' for more information.
6. Re-open your web browser and login to the Eminent Third Party Apps.
7. Click 'My Apps' at the top right corner of the web page.
8. Click 'Add a Stream'.
9. At 'Name' you can fill out the name of the video stream. You may also fill out a random name.
10. 'SWF location' remains empty.
11. At 'Stream location' you can fill out the web address you have written down, or you can copy the web address to this rule.
12. Click 'Save'. You have now added a 'stream'.
13. The added stream is now visible at the App list.
14. If you want to play the added stream, go to the '3rd Party Apps' icon using your Media Player.

Streams which have been added by yourself can not be placed in folders or subfolders. Streams which have been created by yourself will always be placed in the root of the 'My Apps' page!

Note: It is possible not all video streams are working. If so, try to use another video stream!

16.0 Downloading using the media player

The EM7385 & EM7380 are equipped with a Usenet (NZBget) and a Torrent module. The Torrent module is called Transmission. Using one of these modules, you are able to download files from the internet.

When using the EM7385: The use of these modules require an internal hard disk drive, which needs to be formatted using the EM7385's internal format option.

When using the EM7380: A USB hard disk needs to be in use to be able to use the download functions of the EM7380.

Hint: In order to make sure your downloads will not get corrupt if the media player is suddenly or accidentally turned off using the remote control, the media player has a built-in 'Safe shutdown' feature which is turned on by default. However, you need to make sure the 'Safe shutdown' feature is enabled. This feature makes sure the download process will be stopped safely before the media player completely turns off.

This option can be found using 'Setup → Misc → Safe shutdown' and set this feature to 'On'.

16.1 Setting up the NZBget module

Hint: The NZBget module will only start if an internal hard disk is available in the EM7385 and a USB hard disk is connected to the EM7380. Also, the hard disk needs to be formatted using the menu of the media player.

Hint: Use the following link to access Eminent's YouTube channel and view a detailed NZBget workshop: <http://www.youtube.com/eminenteuropa>

1. Use the navigation keys to select 'Setup' and press the 'OK' button.
2. Select 'Network' and press the 'OK' button.
3. Select 'NZBD' and press the 'OK' button. Set 'NZBD' to 'On' and press the 'OK' button after which the 'Network' menu is shown again.
4. Make sure you know your media player's IP-Address. Select 'Network Info' and press the 'OK' button after which the (detailed) network information is shown.
5. Open your computer's web browser.
6. Fill out the IP-address of the EM7380 or EM7385 using the web browsers address bar following :8080. For example: <http://192.168.1.25:8080> or <http://192.168.1.25:8066>
7. The NZB module will open.
8. Click 'Config'.
9. Fill out the name of your news server at 'Server1.Host'. For example: news.provider.com.
10. Fill out the username of your news server if required at 'Server1.Username'.
11. Fill out the password of your news server if required at 'Server1.Password'.
12. Select the amount of used ports at 'Server1.Connections'. '4' is the default setting.
13. Click 'Save Changes'.
14. Click 'Back to Main Page'.
15. Then click 'Shutdown' and wait a few seconds. Then click 'Start'.
16. The NZB module is now ready to be used.

If you want to use a secured news server, you need to fill out port number '563' at 'Server1.Port'. Also, 'Server1.Encryption' needs to be set to 'Yes'.

16.2 Using the NZBget module

1. Make sure the NZB module has been setup and you are in the main menu. Also, make sure you have a NZB file on your computer.
2. Click 'Browse' at 'Add NZB file' and browse to your NZB file.
3. Double-click the NZB file you want to use.
4. Click 'Submit File' after which the NZB file will be transferred from your computer to the media player.

5. The media player will automatically start to download.

Hint: The downloaded files will be placed on the hard disk in the 'Download' folder.

In case you are using the EM7380: Make sure the USB hard disk is not disconnected while the media player is downloading. Disconnecting the USB hard disk while downloading can result in corrupt downloads and a non working Transmission module.

16.3 Using the Transmission module

Hint: The Transmission module will only start if an internal hard disk is available in the EM7385 and a USB hard disk is connected to the EM7380. Also, the hard disk needs to be formatted using the menu of the media player.

Hint: In order to make sure your downloads will not get corrupt if the media player is suddenly or accidentally turned off using the remote control, the media player has a built-in 'Safe shutdown' feature which is turned on by default. However, you need to make sure the 'Safe shutdown' feature is enabled. This feature makes sure the download process will be stopped safely before the media player completely turns off. This option can be found using 'Setup → Misc → Safe shutdown' and set this feature to 'On'.

Hint: Use the following link to access Eminent's YouTube channel and view a detailed Transmission workshop: <http://www.youtube.com/eminenteuropa>

1. Use the navigation keys to select 'Setup' and press the 'OK' button.
2. Select 'Network' and press the 'OK' button.
3. Select 'BTPD' and press the 'OK' button. Set 'BTPD' to 'On' and press the 'OK' button after which the 'Network' menu is shown again.
4. Make sure you know your media player's IP-Address. Select 'Network Info' and press the 'OK' button after which the (detailed) network information is shown.
5. Open your computer's web browser.
6. Fill out the IP-address of the EM7380 or EM7385 using the web browsers address bar following :9091 and press the 'Enter' button. For example:
http://192.168.1.25:9091
7. Click 'Open'.
8. Then click 'Browse' and browse to your torrent file.
9. Double-click the torrent file you want to use.
10. Click 'Upload' after which the torrent file will be transferred from your computer to the media player.
11. The download will start automatically. If not, select the torrent which will be displayed in the menu and click 'Start'.

Down at the left of the menu, you will see a sprocket. Click this sprocket to go the settings page of Transmission. Here you can alter settings like your maximum download speed. There is no limit to this download speed by default, so your network

and internet connection may experience a sluggish performance. For this reason we recommend you to set a maximum to this download speed.

Although Transmission has UPnP support, it is possible you have to open the Transmission port manually on your modem or router in case your modem or router does not support UPnP functions. The used port can be found at the settings page of Transmission and can also be changed. Refer to the manual of your modem or router how to open ports if necessary.

In case you are using the EM7380: Make sure the USB hard disk is not disconnected while the media player is downloading. Disconnecting the USB hard disk while downloading can result in corrupt downloads and a non working Transmission module.

17.0 Using the Smart Remote app (Android) & Smart Control app (iOS) to control the media player

It is possible to control the EM7385 & EM7380 by using your Android and iOS devices (smartphones and tablets). During the following steps we will describe how to use the specific app.

Note: Your Android or iOS device needs to be connected to the same (local) network as the media player is, to be able to control the media player using the smart control app.

17.1 Smart Remote for Android

1. Visit the 'Play Store' using your Android device.
2. Search for 'Smart Remote'.
3. If correct, the (free) Smart Control (from V One Multimedia) app is available.
4. Download and install the app.
5. Open the Smart Remote app.
6. Select 'Input Address'.
7. Fill out the IP-Address of the media player at the 'Set remote IP' field.
8. Press the 'Connect' button.
9. If correct, a remote control display will be shown. At the top of the remote control display you should see the connected IP-Address.
10. You are now able to control the media player using your Android device.

17.2 Smart Control for iOS devices

1. Visit Apple's 'App Store' using your iOS device.
2. Search for 'Smart Control'.
3. If correct, the (free) Smart Control (from V One Multimedia) app is available.

4. Download and install the app.
5. Open the Smart Control app.
6. Select 'Input Address'.
7. Fill out the IP-Address of the media player at the 'Set remote IP' field.
8. Press the 'Connect' button.
9. If correct, a remote control display will be shown. At the top of the remote control display you should see the connected IP-Address.
10. You are now able to control the media player using your iOS device.

Hint: Since the media player is controlled using the network, it is possible a higher response time occurs.

18.0 Explanation of the remaining menu items

Besides the already mentioned functions, there are a few menu-items we will highlight:

18.1 System menu

Screen Saver:

The media player will automatically use a default screen saver when no other functions are in use while the media player is turned on. If desired, you can change the activation time for the screensaver, but you can also select whether the screen saver uses your own images as screen saver. To change the screen saver settings:

1. Use the navigation keys to select 'Setup' and press the 'OK' button.'
2. Select 'Screen Saver' and press the 'OK' button.
3. Select the activation time at 'Timing'.
4. At 'Options', you can select whether the screen saver uses it's default image. You can also choose to use your own images** as screen saver at 'Photo Album'. Also, it is possible to use the 'Flicker' function. Using this function, the screen saver will use random images which are available on public Flickr accounts.

Note: An internet connection is required to be able to use the 'Flicker' function.

***Note: The screen saver will display the images accordingly to the slide show settings you have made.*

18.2 MISC menu

18.2.1 Retrieving the software version and network data

Version Info:

Using this function, you will be able to retrieve the current firmware version. This can be handy since firmware upgrades can become available. Before upgrading, you need to know which firmware is already in use.

1. Use the navigation keys to select 'Setup' and press the 'OK' button.
2. Select 'Misc'.
3. Select 'Version Info' and press the 'OK' button after which the firmware version information will be shown amongst others.

Network Info:

Using this function, you will be able to retrieve more specific network information such as wired and wireless Mac-Addresses. This could be of importance if your router needs to have this information for security purposes. Also, the IP-Address will be shown.

1. Use the navigation keys to select 'Setup' and press the 'OK' button.
2. Select 'Network'.
3. Select 'Network Info' and press the 'OK' button after which the detailed network information will be shown.

18.2.2 Other items of the MISC menu**USB upgrade**

This option is normally used to install new firmware which needs to be present on a connected USB memory stick.

Please note: The exact upgrade procedure is included in the firmware itself. Check www.eminent-online.com if any updates for your media player are available. Do not try to install firmware files which are intended for other types of media players. Warranty may void!

Key Tone Volume

By default, there is a clicking sound hearable when using the remote control or when selecting a menu item. The key tone volume is set to 'Off' by default.

Weather city

The media player shows a weather update in the main menu if connected to the internet. You can select your own city or village by clicking the 'Weather city' option. Fill out the name of your own city or village to see the current weather status of your own city or village in the main menu of the media player

19.0 Frequently Asked Questions and other related information

The latest Frequently asked questions for your product can be found on the support page of your product. Eminent will update these pages frequently to assure you have the most recent information. Visit www.eminent-online.com for more information about your product.

20.0 Service and support

This users manual has been carefully written by Eminent's technical experts. If you have problems installing or using the product, please fill out the support form at the website www.eminent-online.com/support.

You can also contact us by phone. Below you will find a list with phone numbers for each supported country.

| Country | Phone number | Rate per minute* |
|------------------|---|------------------|
| Belgium (Dutch) | 070 277 286 | €0.30 |
| Belgium (French) | 070 277 286 | €0.30 |
| Denmark | +45 69918565 | Local Costs |
| Finland | +35 8942415826 | Local Costs |
| Germany | +49 (0)30 887 89 298 | Local Costs |
| Italy | +39 0240042016 | Local Costs |
| Norway | +47 21075033 | Local Costs |
| Spain | 807 080 042 | €0.41 |
| Sweden | +46 840 309985 | Local Costs |
| The Netherlands | 0900-3646368 | €0.10 |
| UK | +44 (0)203 318 9998 | Local Costs |
| Hungary | 1-4088902 (From Budapest) | Local Costs |
| Hungary | 06-1-4088902 (From the rest of Hungary) | Local Costs |
| Hungary | +36 1-4088902 (International) | Local Costs |

* Rates mentioned in this table do not include cell phone charges.

21.0 Warning and points of attention



Due to laws, directives and regulations set out by the European parliament, some (wireless) devices could be subject to limitations concerning its use in certain European member states. In certain European member states the use of such devices could be prohibited. Contact your (local) government for more information about this limitations.

Always follow up the instructions in the manual*, especially where it concerns devices which need to be assembled.

Warning: In most cases this concerns an electronic device. Wrong/improper use may lead to (severe) injuries!

Repairing of the device should be done by qualified Eminent staff. The warranty immediately voids when products have undergone self repair and/or by misuse. For extended warranty conditions, please visit our website at www.eminent-online.com/warranty.

**Tip: Eminent manuals are written with great care. However, due to new technological developments it can happen that a printed manual does not longer contain the most recent information.*

If you are experiencing any problems with the printed manual or you can not find what you are looking for, please always check our website www.eminent-online.com first for the newest updated manual.

Also, you will find frequently asked questions in the FAQ section. It is highly recommended to consult the FAQ section. Very often the answer to your questions will be found here.

22.0 Warranty conditions

The five-year Eminent warranty applies to all Eminent products, unless mentioned otherwise before or during the moment of purchase. After buying a second-hand Eminent product the remaining period of warranty is measured from the moment of purchase by the product's initial owner. Eminent warranty applies to all Eminent products and parts, indissolubly connected or mounted to the product it concerns. Power supply adapters, batteries, antennas and all other products not directly integrated in or connected to the main product or products of which, without reasonable doubt, can be assumed that wear and tear during use will show a different pattern than the main product, are not covered by the Eminent warranty. Products are not covered by the Eminent warranty when exposed to incorrect/improper use, external influences or when opening the service parts of the product by parties other than Eminent. Eminent may use refurbished materials for repair or replacement of your defective product. Eminent cannot be held responsible for changes in network settings by internet providers. We cannot guarantee that the Eminent networking product will keep working when settings are changed by the internet providers. Eminent cannot guarantee the working of web services, apps and other third party content that is available through Eminent or Ewent products. Eminent products with an internal hard disk have a limited warranty period of two years on the hard disk. Eminent could not be held responsible for any data lost. Please make sure that if the product stores data on a hard drive or other memory source, you will make a copy before you return the product for repair.

When my product gets defective

Should you encounter a product rendered defective for reasons other than described above: Please contact your point of purchase for taking care of your defective product.

23.0 Declaration of Conformity

Application of Council Directives:

Manufacturer's Name: Eminent

Type of Equipment:
Apparatus: High Definition Media Player

Equipment Class: Commercial, Light Industrial, Consumer

PRODUCTNUMBER:
EM7380 & EM7385 hdMEDIA 3D – Full HD Media Player with 3D & Android

Conforms to the following standards: EN 55022:2010
EN 61000-3-2:2006+A1:2009+A2:2009
EN 61000-3-3:2008
EN 55024:2010

EPA3050B:1996, EN1122B:2001, EPA3052:1996,
EPA3060A:1996, EPA7196A:1992, EPA3540C:1996,
EPA8270D:2007, IEC62321:2008

Manufactured from: 08-17-2012

I, the undersigned, hereby declare that the equipment Conforms with the essential requirements and other relevant requirements of the R&TTE Directive (1999/5/EC) and to the above standards.

Place: Barneveld, The Netherlands
Date: 08-17-2012
Name: Marc Pannebakker

Signature:

EMINENT

WWW.EMINENT-ONLINE.COM

Trademarks: all brand names are trademarks and/or registered trademarks of their respective holders.

The information contained in this document has been created with the utmost care. No legal rights can be derived from these contents. Eminent cannot be held responsible, nor liable for the information contained in this document.



Eminent is a member of the Intronics Group