

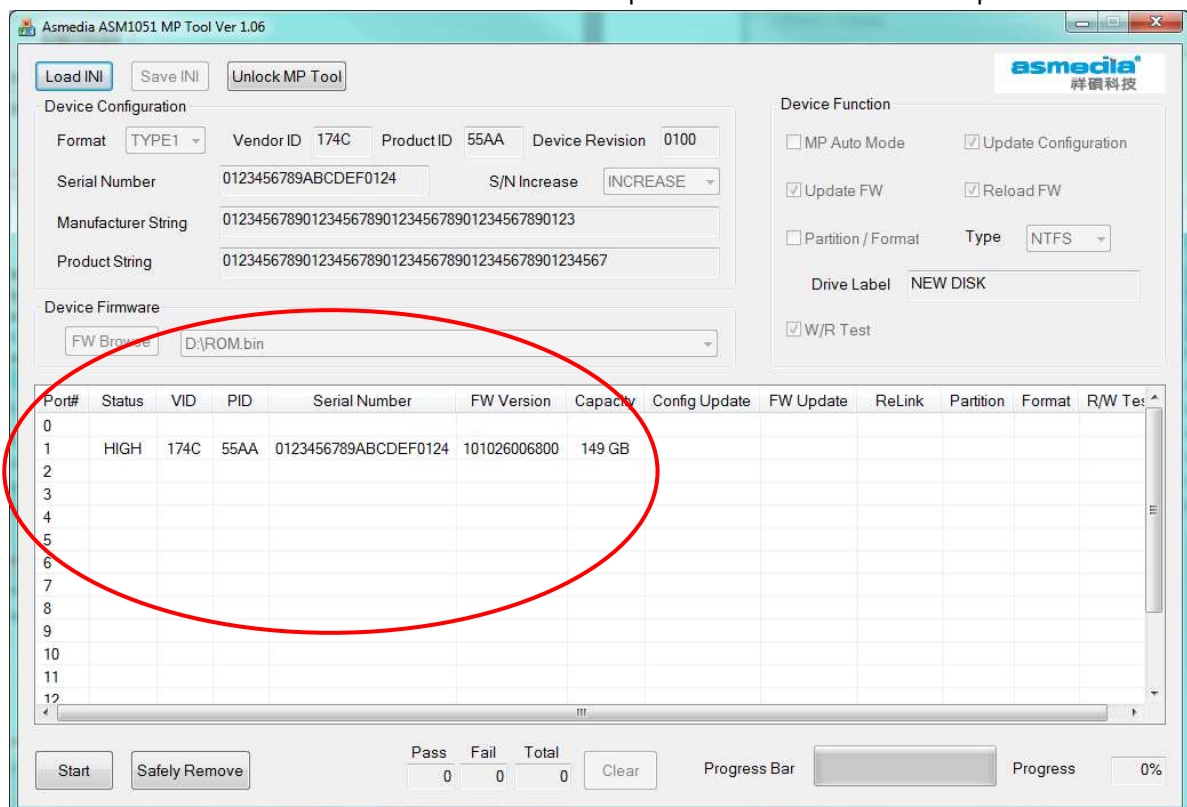
EM/EW7055 3Tb Firmware Update Instructions

Nederlandstalige instructies zie pagina 5

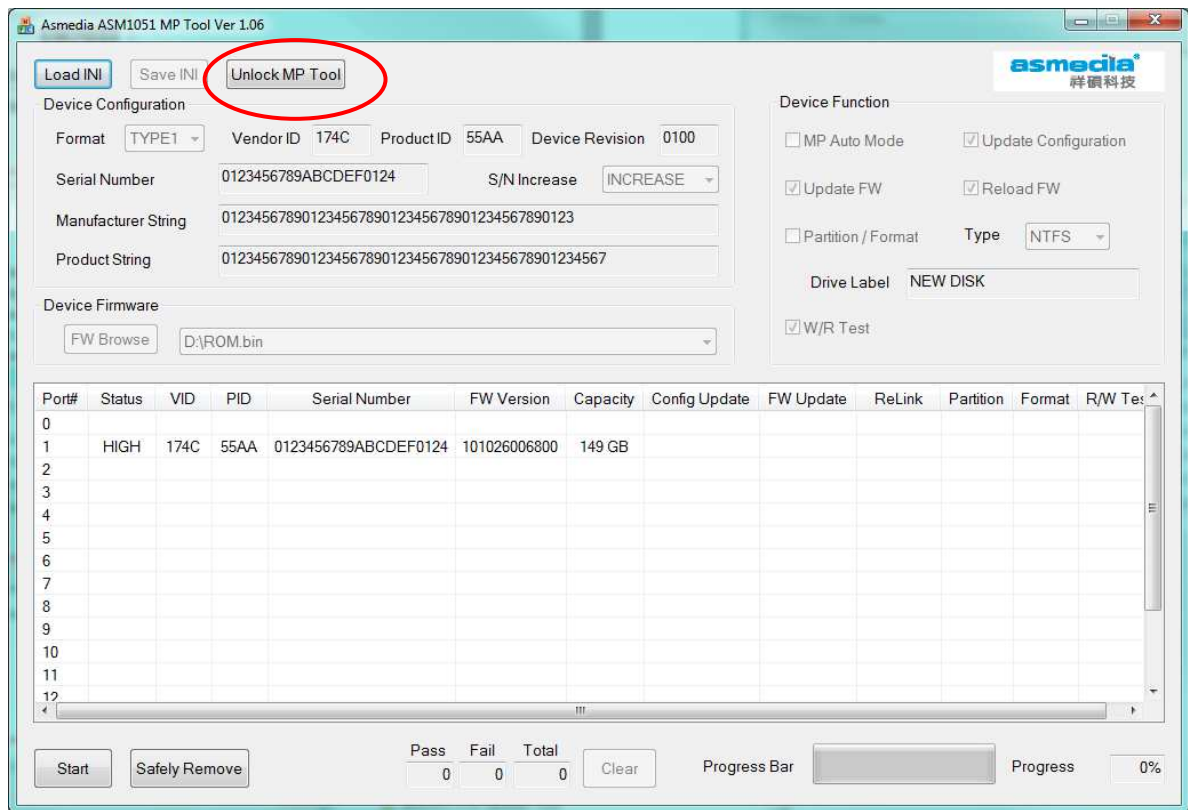
English Instructions

1.0 Update procedure

1. Connect the EM/EW7055 to a free USB port.
2. Depending on your Operating System; choose the Win-32-bit or Win-64-bit folder.
3. Start the MPTool.exe (On windows 7, run it as administrator by using the right mouse button and select Run as Administrator).
4. Your EM/EW7055 should be available on one of the ports. It doesn't matter which port.



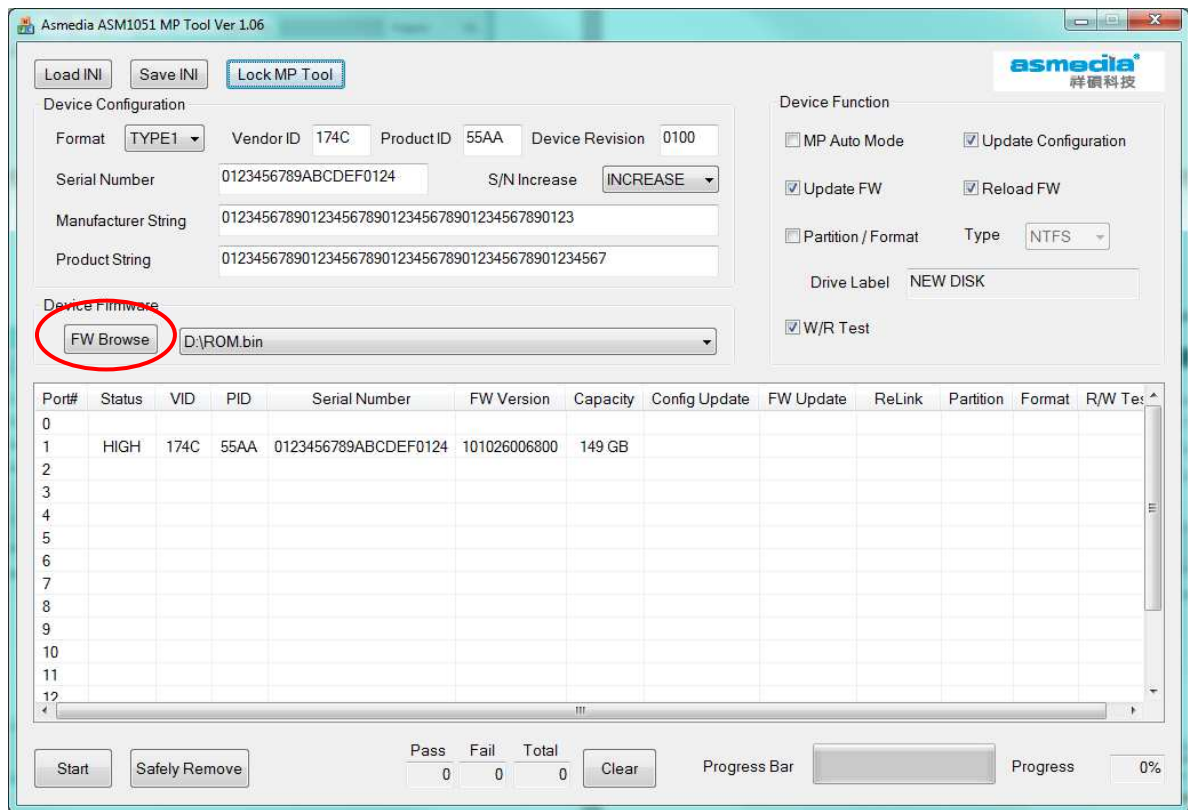
5. Select Unlock MP Tool.



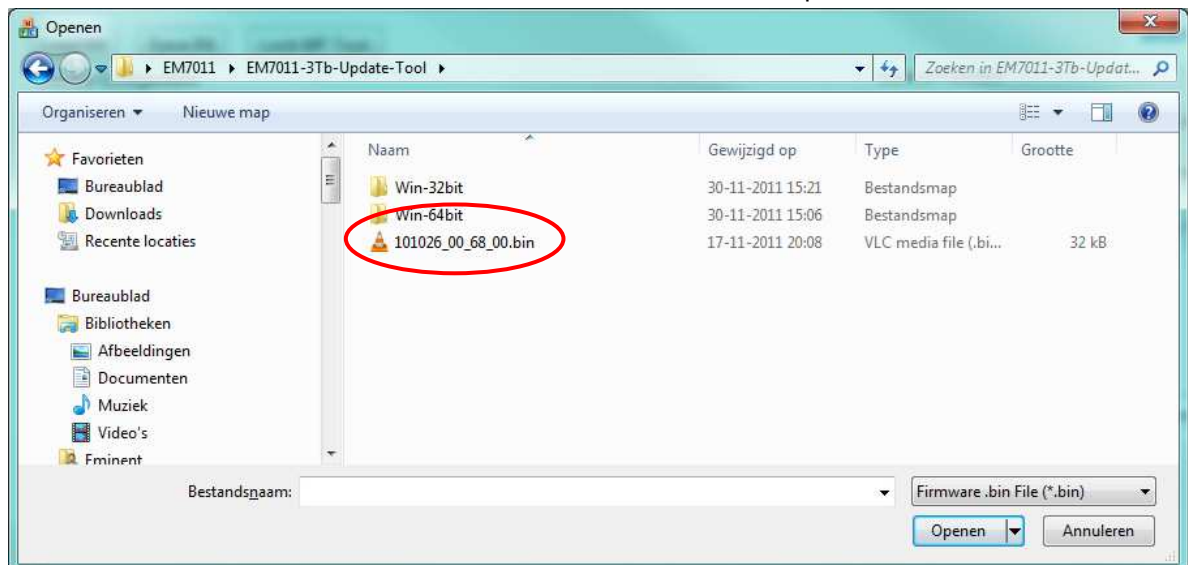
6. Fill in the password : asmedia and select OK



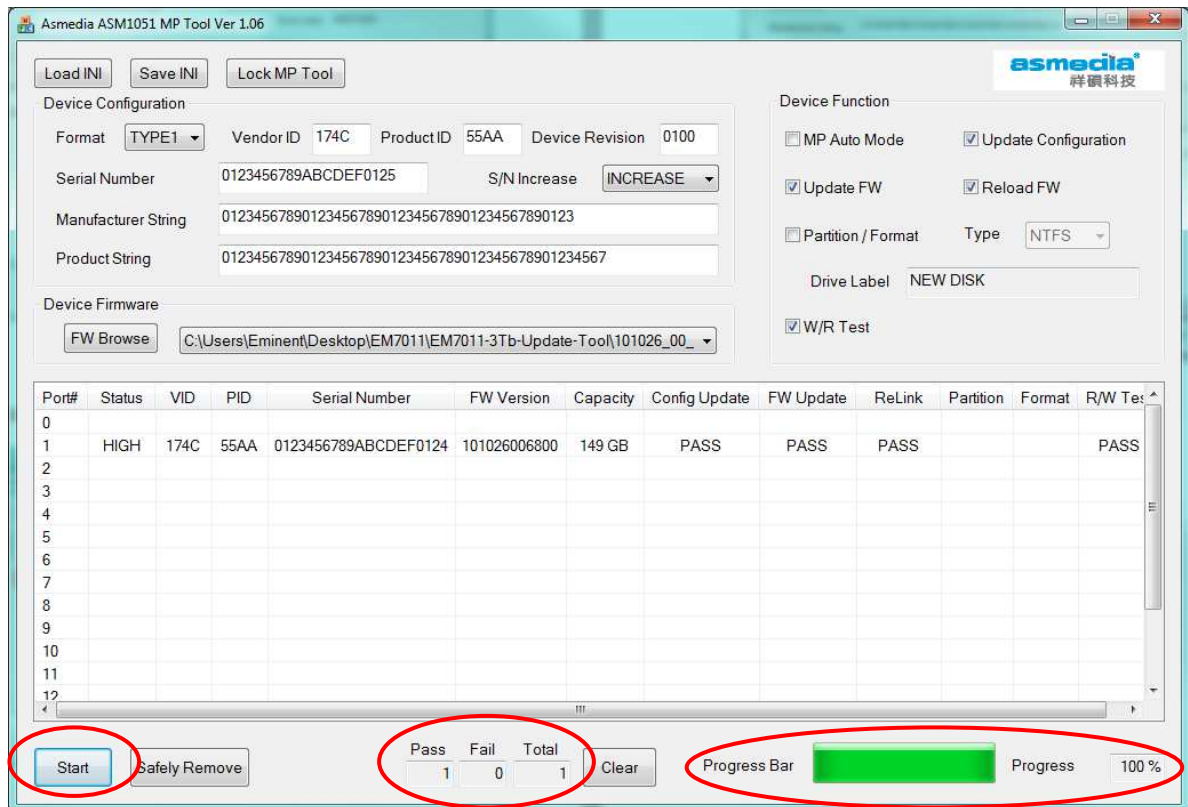
7. Select FW Browse



8. Select the file 121005_01_00_00.bin This file is on the root of the Update Tool folder.



9. Select start and wait until the update process has finished (Progress Bar at 100%) and the result is Pass.



The screenshot shows the Asmedia ASM1051 MP Tool Ver 1.06 interface. The 'Device Configuration' section includes fields for Vendor ID (174C), Product ID (55AA), Device Revision (0100), Serial Number (0123456789ABCDEF0125), S/N Increase (INCREASE), Manufacturer String, and Product String. The 'Device Firmware' section shows the FW Browse button and a file path. The 'Device Function' section includes checkboxes for MP Auto Mode, Update Configuration, Update FW, Reload FW, Partition / Format, and W/R Test, along with a Drive Label field (NEW DISK) and a Type dropdown (NTFS). A table displays the update results for Port# 1, showing Status: HIGH, VID: 174C, PID: 55AA, Serial Number: 0123456789ABCDEF0124, FW Version: 101026006800, Capacity: 149 GB, Config Update: PASS, FW Update: PASS, ReLink: PASS, Partition: PASS, Format: PASS, and R/W Test: PASS. The 'Start' button is circled in red. The 'Pass' status is circled in red, showing 1 Pass, 0 Fail, and 1 Total. The 'Progress Bar' is circled in red, showing 100% progress.

Port#	Status	VID	PID	Serial Number	FW Version	Capacity	Config Update	FW Update	ReLink	Partition	Format	R/W Test
0												
1	HIGH	174C	55AA	0123456789ABCDEF0124	101026006800	149 GB	PASS	PASS	PASS			PASS
2												
3												
4												
5												
6												
7												
8												
9												
10												
11												
12												

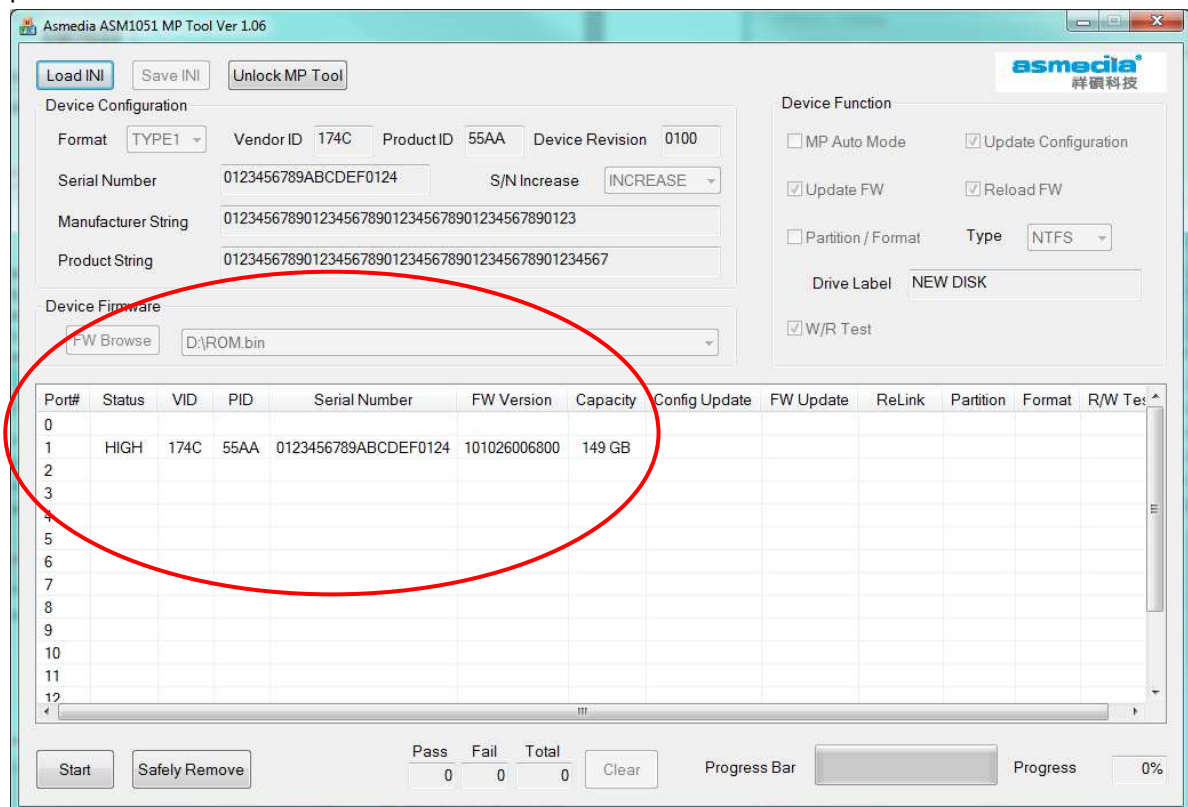
10. The update is finished. Close the MPTool program.

EM/EW7055 3Tb Firmware Update Instructies

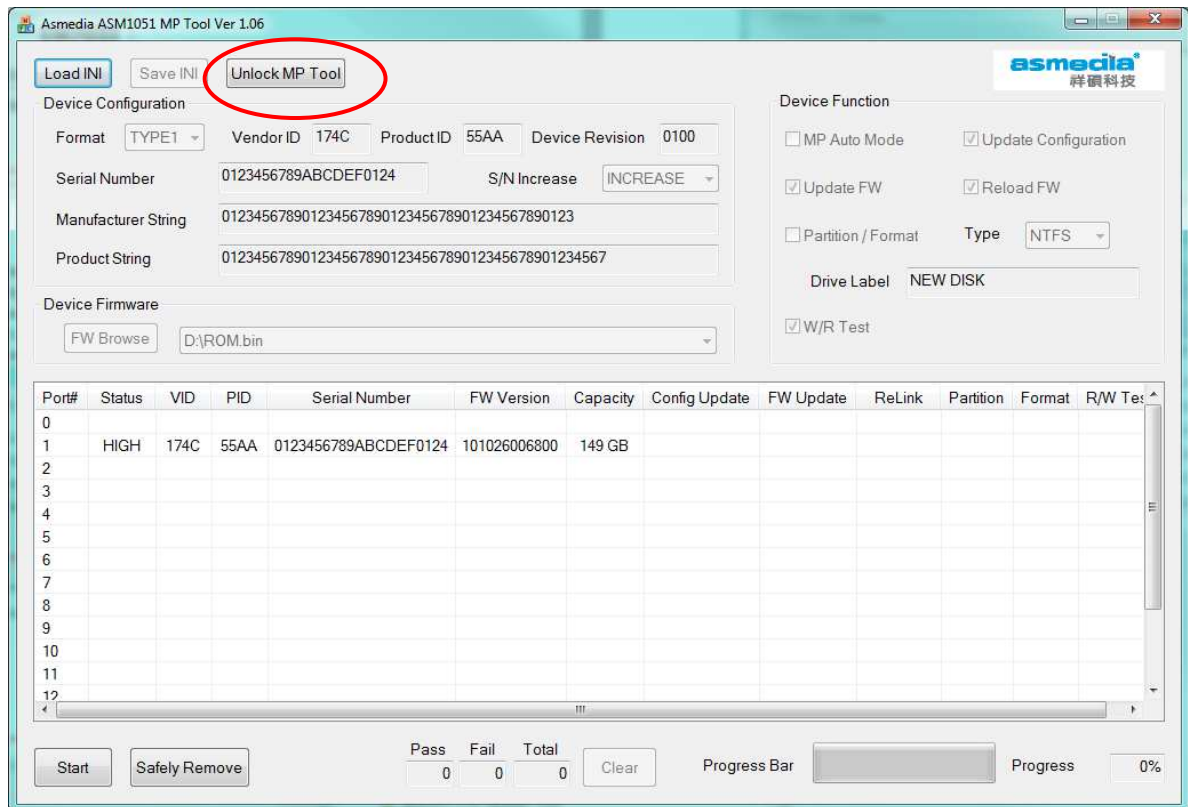
Nederlandstalige instructie

1.0 Update procedure

1. Verbind de EM/EW7055 met een vrije USB poort.
2. Afhankelijk van je besturingssysteem kies de Win-32-bit of Win-64-bit map.
3. Start MPTool.exe (Bij windows 7, start het programma met administrator rechten door de rechtermuisknop te gebruiken en te kiezen voor Uitvoeren als Administrator).
4. Je EM/EW7055 zal zichtbaar worden bij een van onderstaande poorten. Het maakt niet uit welke poort.



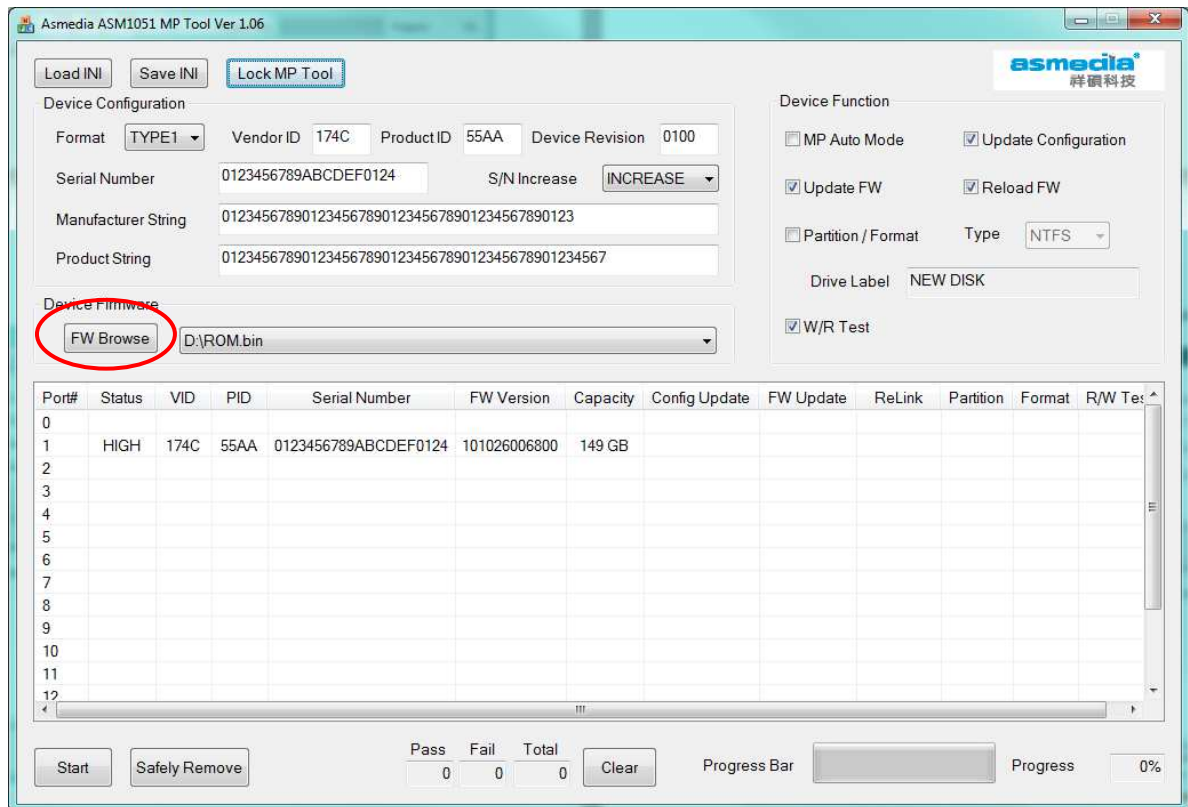
5. Kies Unlock MP Tool.



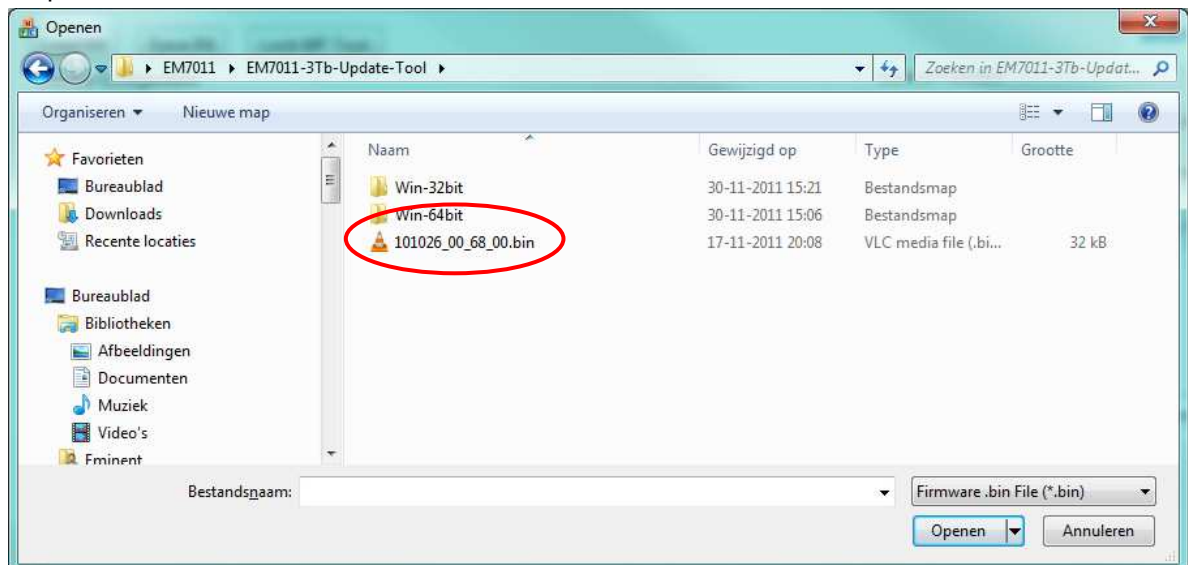
6. Vul als wachtwoord in : asmedia en selecteer OK



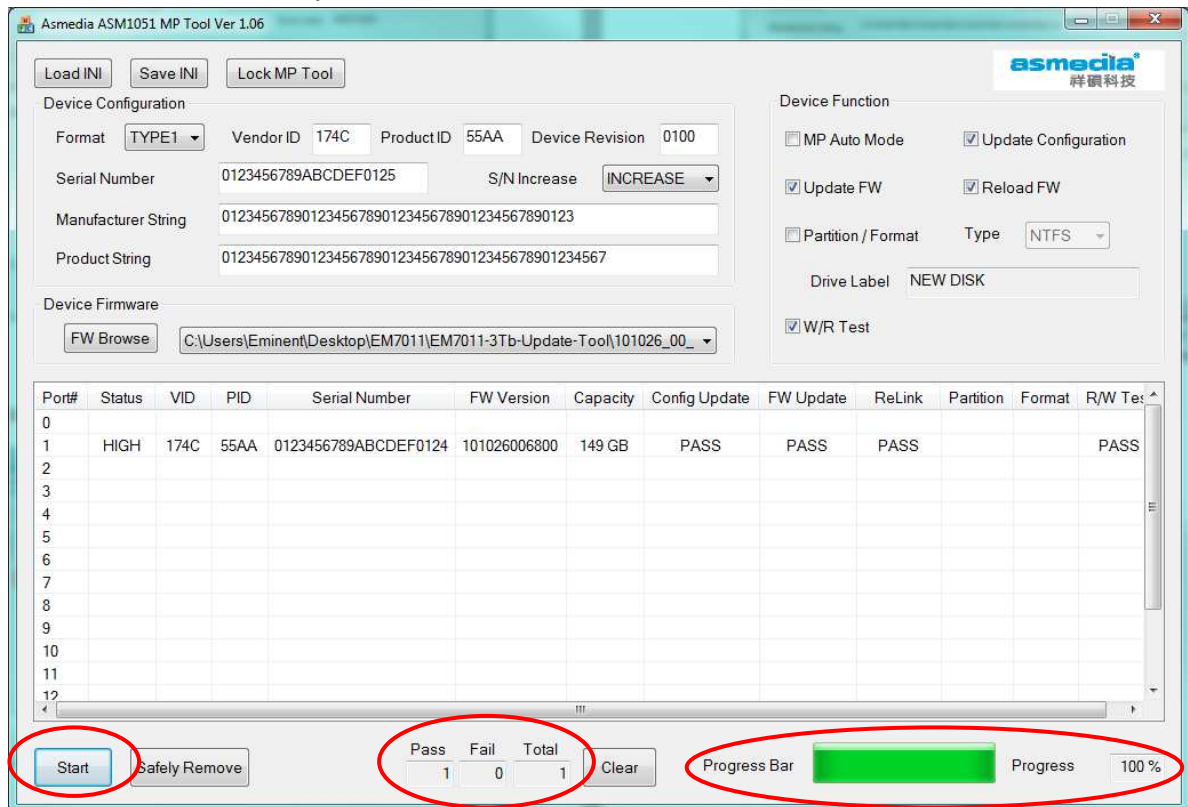
7. Kies FW Browse.



8. Selecteer het bestand 121005_01_00_00.bin Dit bestand bevindt zich in de root van de Update Tool map.



9. Selecteer start en wacht totdat het update proces volledig is afgerond (Progress Bar op 100%) en het resultaat moet Pass zijn.



Asmedia ASM1051 MP Tool Ver 1.06

Load INI Save INI Lock MP Tool

Device Configuration

Format: TYPE1 Vendor ID: 174C Product ID: 55AA Device Revision: 0100

Serial Number: 0123456789ABCDEF0125 S/N Increase: INCREASE

Manufacturer String: 01234567890123456789012345678901234567890123

Product String: 012345678901234567890123456789012345678901234567

Device Firmware

FW Browse: C:\Users\Eminent\Desktop\EM7011\EM7011-3Tb-Update-Tool\101026_00_

Device Function

☐ MP Auto Mode ☒ Update Configuration

☒ Update FW ☒ Reload FW

☐ Partition / Format Type: NTFS

Drive Label: NEW DISK

☒ W/R Test

Port#	Status	VID	PID	Serial Number	FW Version	Capacity	Config Update	FW Update	ReLink	Partition	Format	R/W Test
0												
1	HIGH	174C	55AA	0123456789ABCDEF0124	101026006800	149 GB	PASS	PASS	PASS			PASS
2												
3												
4												
5												
6												
7												
8												
9												
10												
11												
12												

Start Safely Remove

Pass: 1 Fail: 0 Total: 1 Clear

Progress Bar: 100%

10. De update is klaar. Je kunt het programma afsluiten.