



Contents

- Notice 2
- System Requirements 2
- User Notice 2
- Copyright 3
- Software installation 3
- Create Partition 6
- FAT32 Format Utility 8
- One Button File Backup 10
- Quick Launch 12
 - Quick File Backup 13
- File Backup 14
 - File Backup 14
 - File Restore 16
 - Erase File Backup 17
- File Manager 18
- Setup 19
- Other 21
- Technical Support and Services 22
- Contact us 23



Notice

- The type of file system is able to support FAT32 and NTFS both.
- When users operate the PCClone EX Lite, the login must be from Administrator; it can not login from the Guest or any authorized account.
- Does the hard disk happen to the bad sector? Please confirm in advance that can prevent an improper operating of backup or restore.

System Requirements

- Pentium computers or 100% compatible computers.
- Support OS: Microsoft Windows 98SE / Me / 2000 / XP / Vista / 7.
- CPU Pentium or above.
- 128 MB RAM.
- Display card: compatible with VESA standard.
- An external USB hard disk.

User Notice

- Except in case of improper use, we provide a 3-year guarantee of free service.
- If this product is defective, please return it to the dealer from whom the product was originally purchased, together with your original sales receipt for replacement.
- FNet Co., Ltd. is not liable for any consequential, incidental or indirect damages(including damages for indirect personal injury, loss of business profits, business interruption, loss of business information and the like) arising out of the use or inability to use this product.
- FNet Co., Ltd. will not accept returns of opened packages.

Copyright

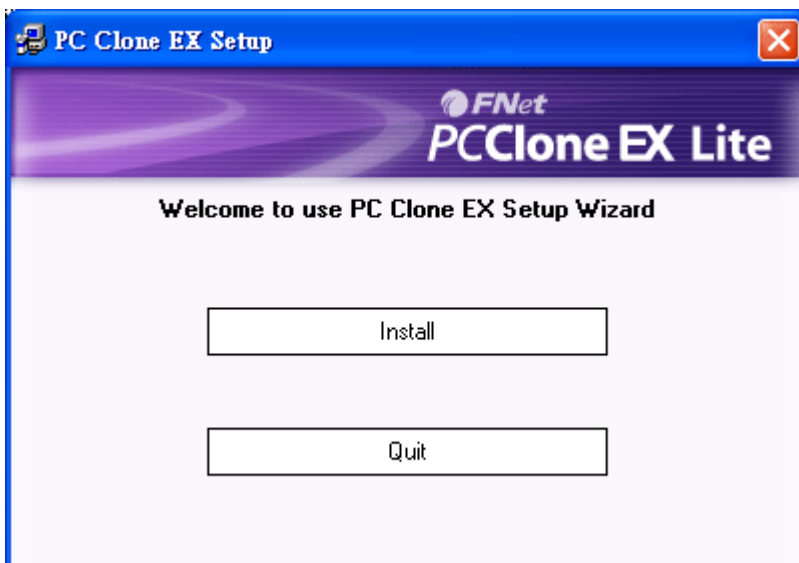
The user is responsible for all results. FNet Co., Ltd owns this product and its relative information; we grant you no right to this product. FNet Co., Ltd. also owns all unauthorized rights in this book.

All rights reserved. No part of the FNet PCClone EX Lite may be copied without the writing permission or authorization of FNet Co., Ltd, who prohibits the sell · rental · exchange · lending · exhibition · revision · destruction, etc. of the product, as these actions could infringe on FNet's rights. FNet also prohibits anyone from re-compiling or reverse engineering of the software, or decoding of our product. Covering or removing the copyright and trademark description is not allowed.

FNet Co., Ltd. owns the FNet PCClone EX Lite's copyright and patent. This product and its manual possess multiple countries' copyright & patent. The trademarks of FNet PCClone EX Lite and FNet are registered by FNet Co., Ltd. and Future Net U.S.A. Corporation. MS-DOS · Microsoft Windows 7 · Windows Vista · Windows 2003 · Windows XP · Windows 2000 · Windows NT · Windows ME · Windows 98 · Windows 95 · Windows 3.1 are trademarks of Microsoft Corporation. Other pictures · product and company names, mentioned herein may be the trademarks of their respective owners.

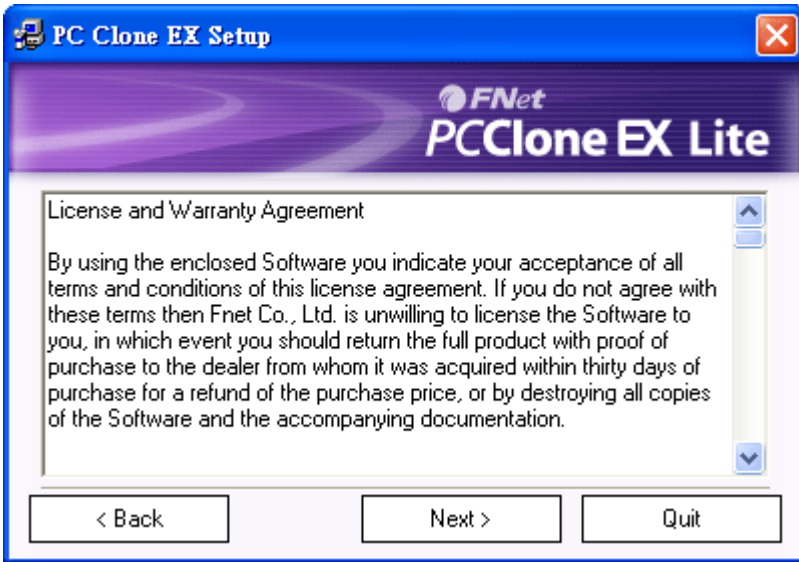
The information in this document is subject to change at anytime without notice. All the product names used herein are own by FNet Co., Ltd unless otherwise noted.

Software installation

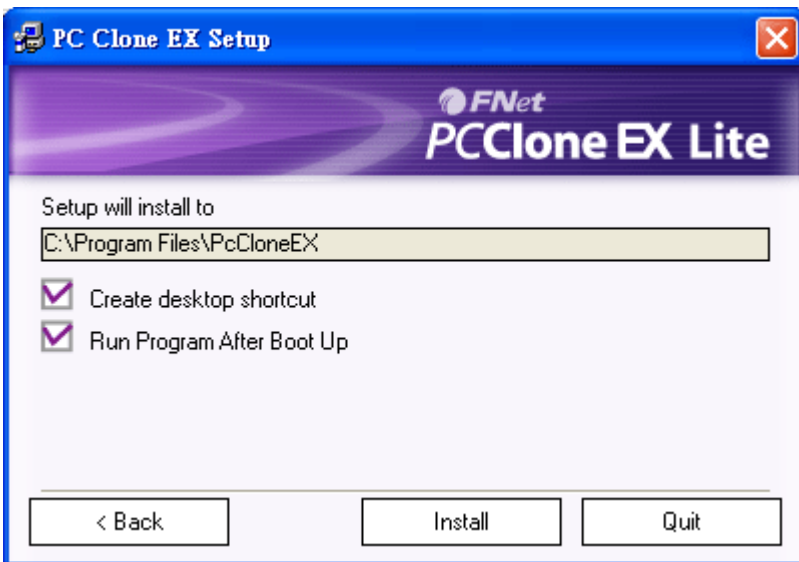


1. Please put PCClone EX Lite CD into CD ROM drive, the program directly goes on the screen of PCClone Setup Wizard. (In case the screen doesn't come out, please operate the window box of "setup.exe")
2. Click "install".

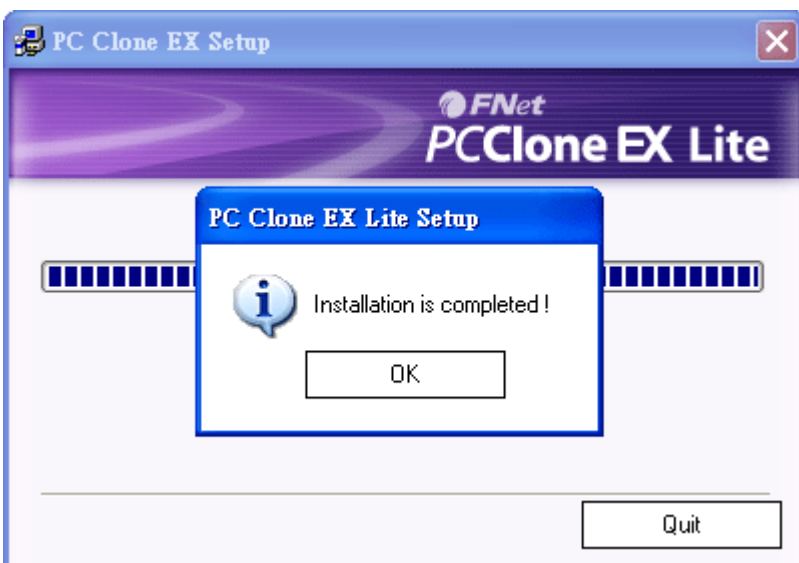




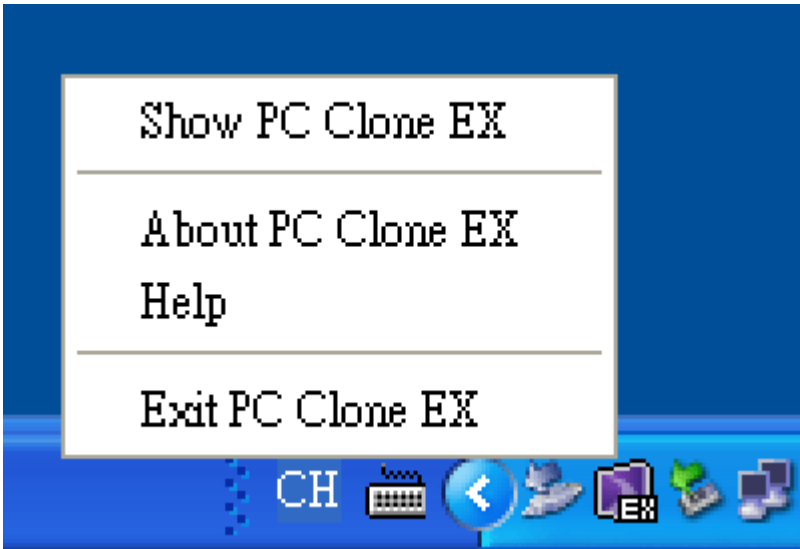
3. Please read the license agreement in detail.
4. If users accept the agreement, please click "Next" to install.



5. Click "Install" to next.



6. The installation is completed, please click "OK" to exit.

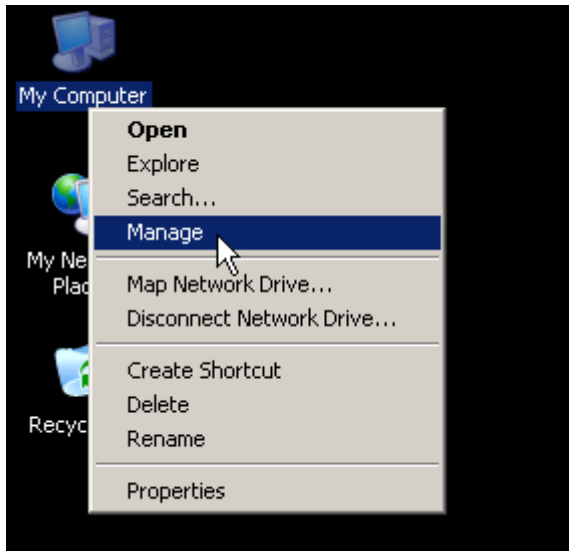


7. "PCClone EX" icon will displays in the notification area after setup; users can double- click the icon or press the right key of the mouse to execute PCClone EX Lite.

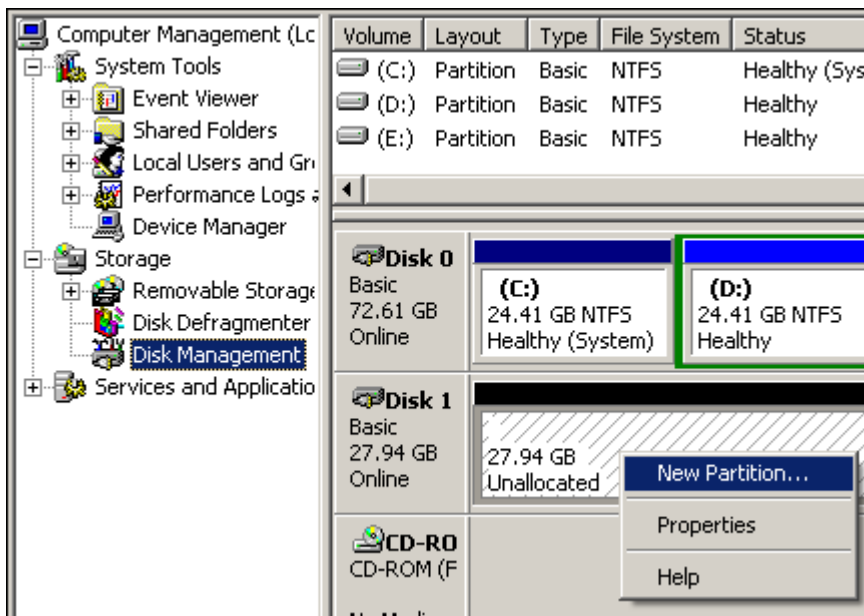
Create Partition

If your USB HDD has managed already, please skip this part and move on next context.

Steps

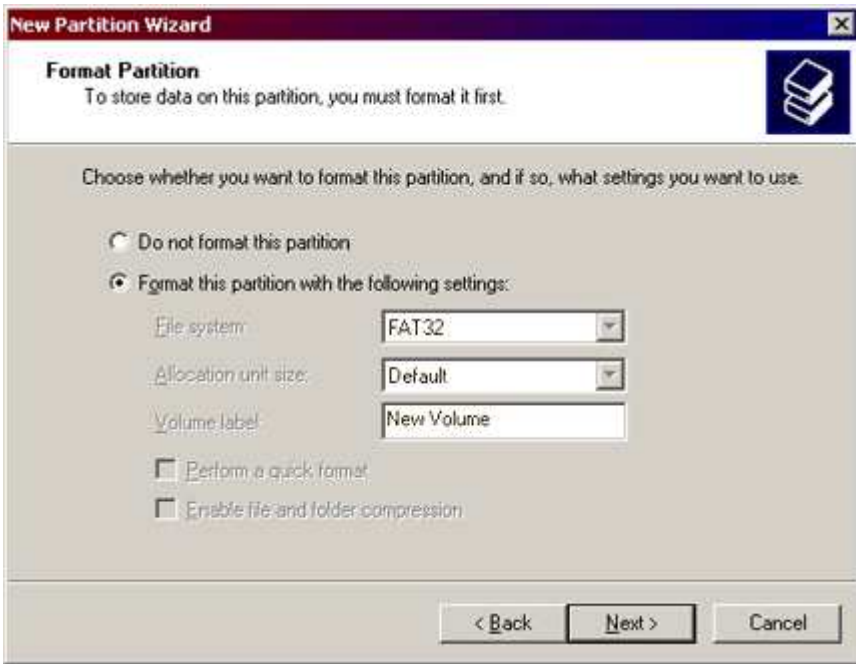


1. Please plug USB HDD. (Turn on the USB power.)
2. Please right click "My computer", and point "manage".
(It also can click in succession as "Start"-> "Control Panel"-> "Administrative Tools"-> "Computer management")
(If your USB HDD has managed already, please skip this part and move on next context.)

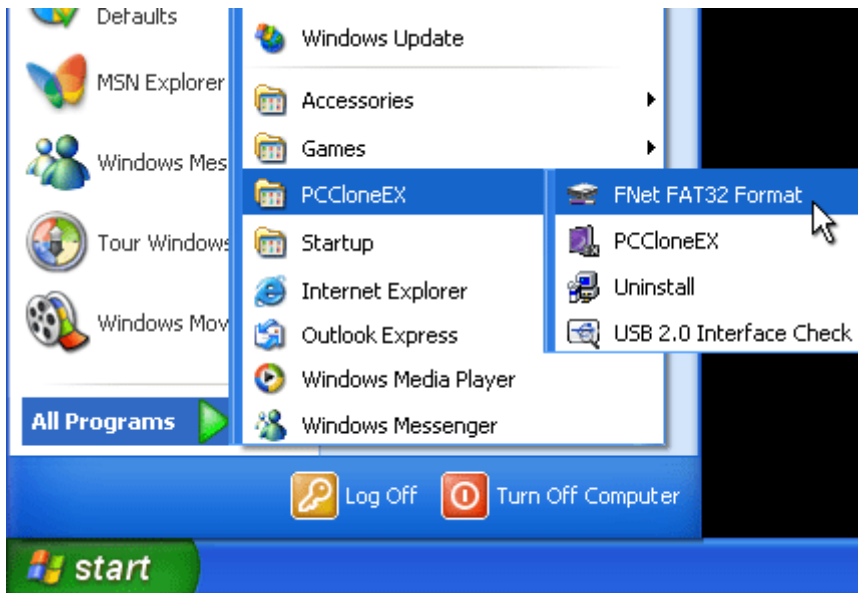


3. Please click "disk management" as the left window, and then find the disk management as the right window.
4. Please right click the disk of "unallocated", and point the "new Partition".
(In order to make sure the disk of "Unallocated" whether the USB disk uses this area or not, users can find out by removing and plugging the port of USB connection.)





5. Follow up the installation of "Partition Wizard" to operate the disk of partition and format.



6. Also, you can format USB hard disk by "[FNet FAT32 Utility](#)" and then you can start the backup function.

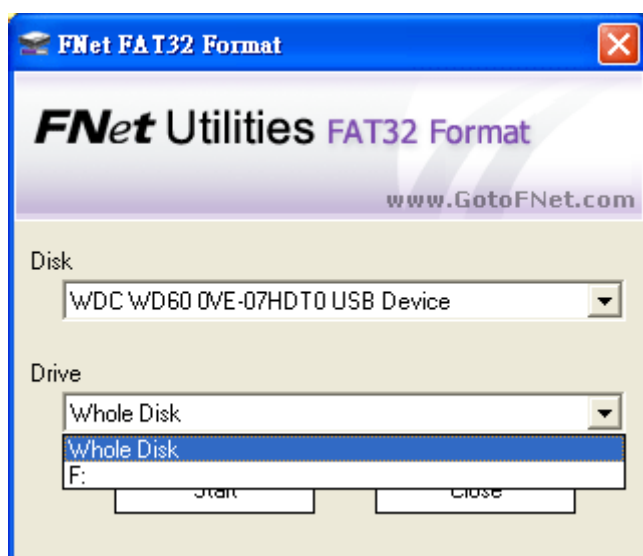
(The detail format steps please refer to the section of "[FNet FAT32 Utility](#)".)

FAT32 Format Utility

For the current HDD capacity is getting bigger, the Fat32 Format Utility in Windows 2000 / XP is not able to support the HDD size exceeding 32GB; FNet recommends [FNet Fat 32 Format Utility](#), which can format the large capacity to be FAT32 Format rapidly and fully, [the size even maximums up to 4 TB \(4000GB\)](#). (**Attention:** all data in USB HDD will be deleted if you use this function)

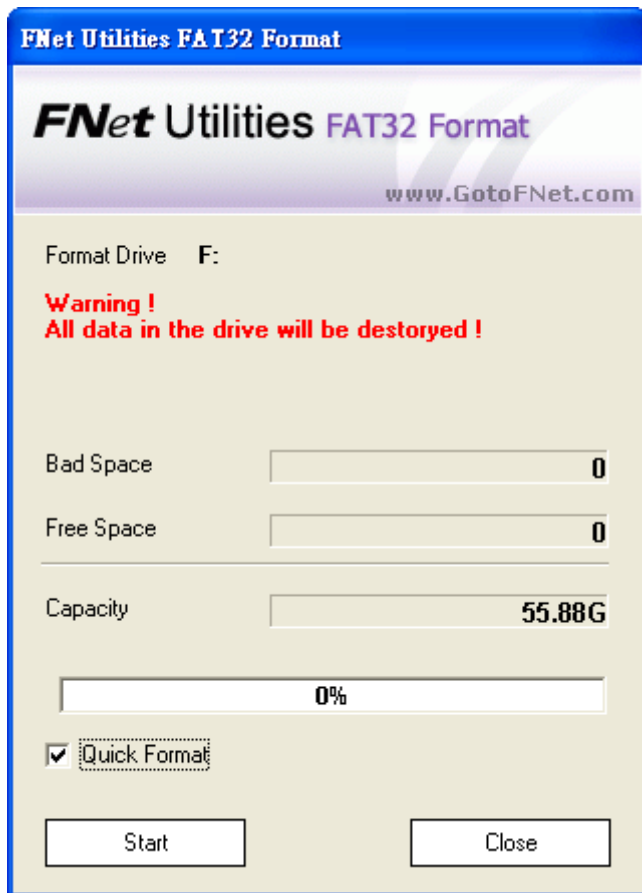


1. Please plug USB HDD, and turn on the computer.
2. Click "Start" -> "All programs" -> "PCClone EX" -> "FNet FAT32 Format" .

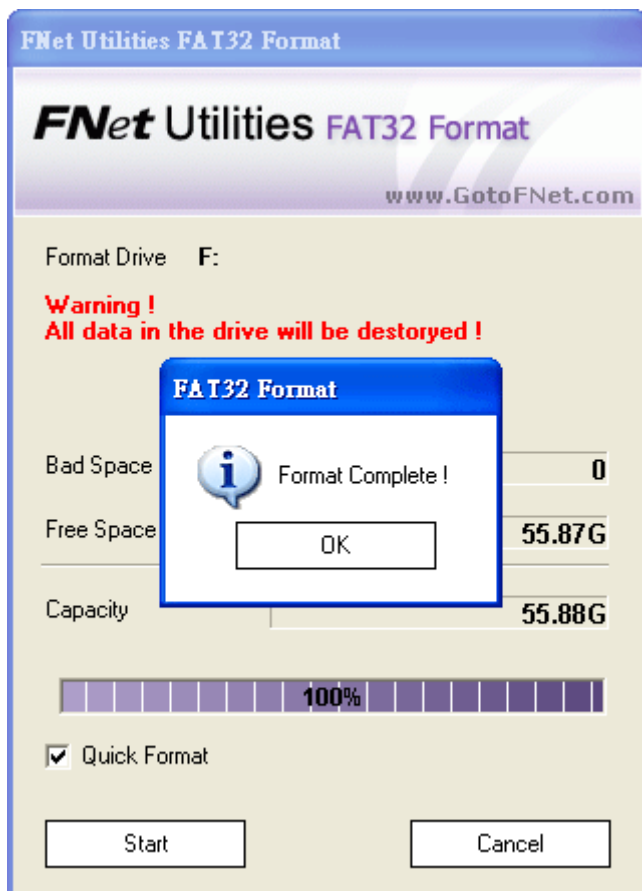


3. Confirm the " USB Device" and "Drive to Format" in the FAT32 Format Utility, and then press "start".





4. Tick " Quick Format" and click "Start" for executing.
(Attention: all data in USB HDD will be deleted if you use this function)



5. The window shows in progress.

One Button File Backup

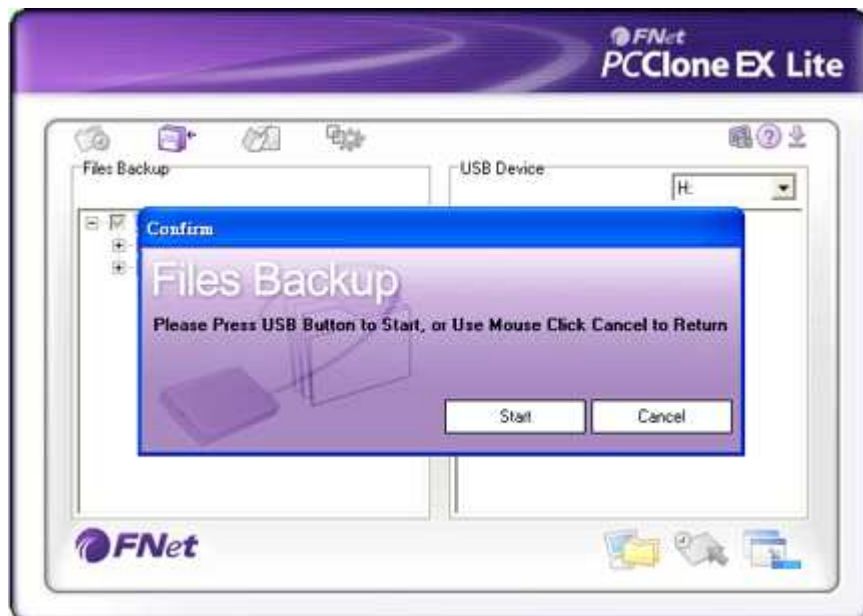
One Button backup function only supports the external HDD case with button design--It won't set comprehensive steps for backup anymore, only use the button on the external HDD case.

Note: when you click the button for backup, the icon of PCClone EX Lite must be staying at the notification area.(For first time using, please refer to the context of "[File backup](#)" and "[Setup](#)".)

The USB driver of Win 98SE/ME to the button trigger support has not unified, therefore, this support in Win98SE/Me does not definite exactly.

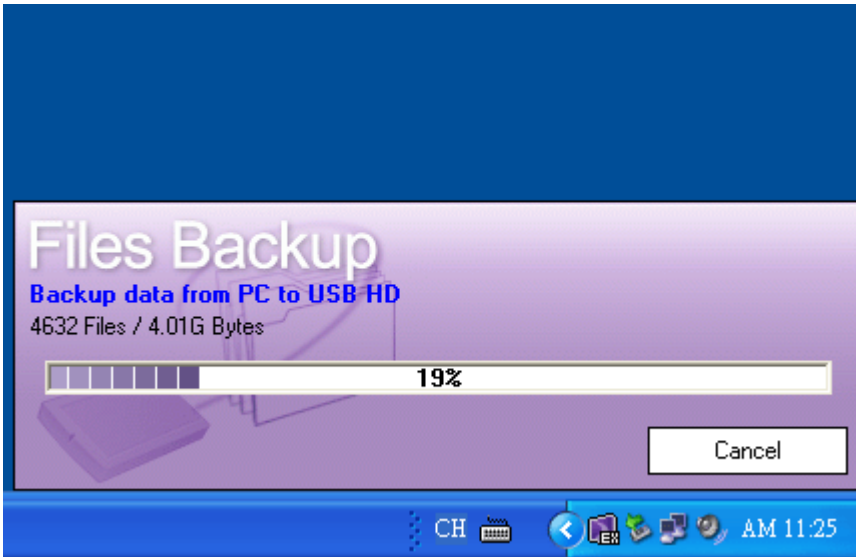


1. Please plug USB HDD. (Turn on USB power)
2. Execute PCClone EX Lite.
3. Just press the button on the external case.
(If the external device has **double buttons** , please click the "File" one.)

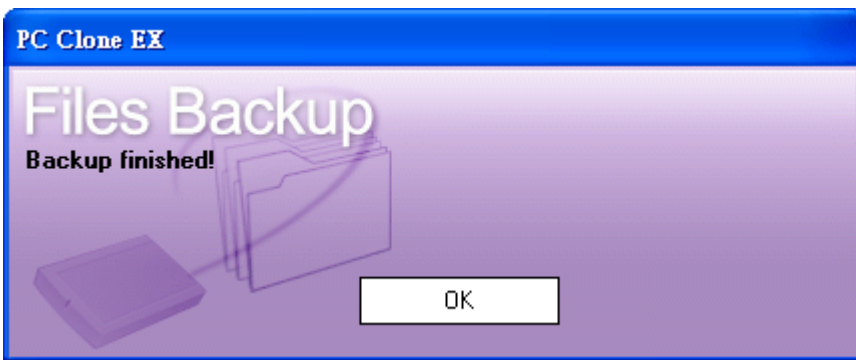


4. A dialog window will jump out for confirming the File backup or, users can click "start" by the mouse.



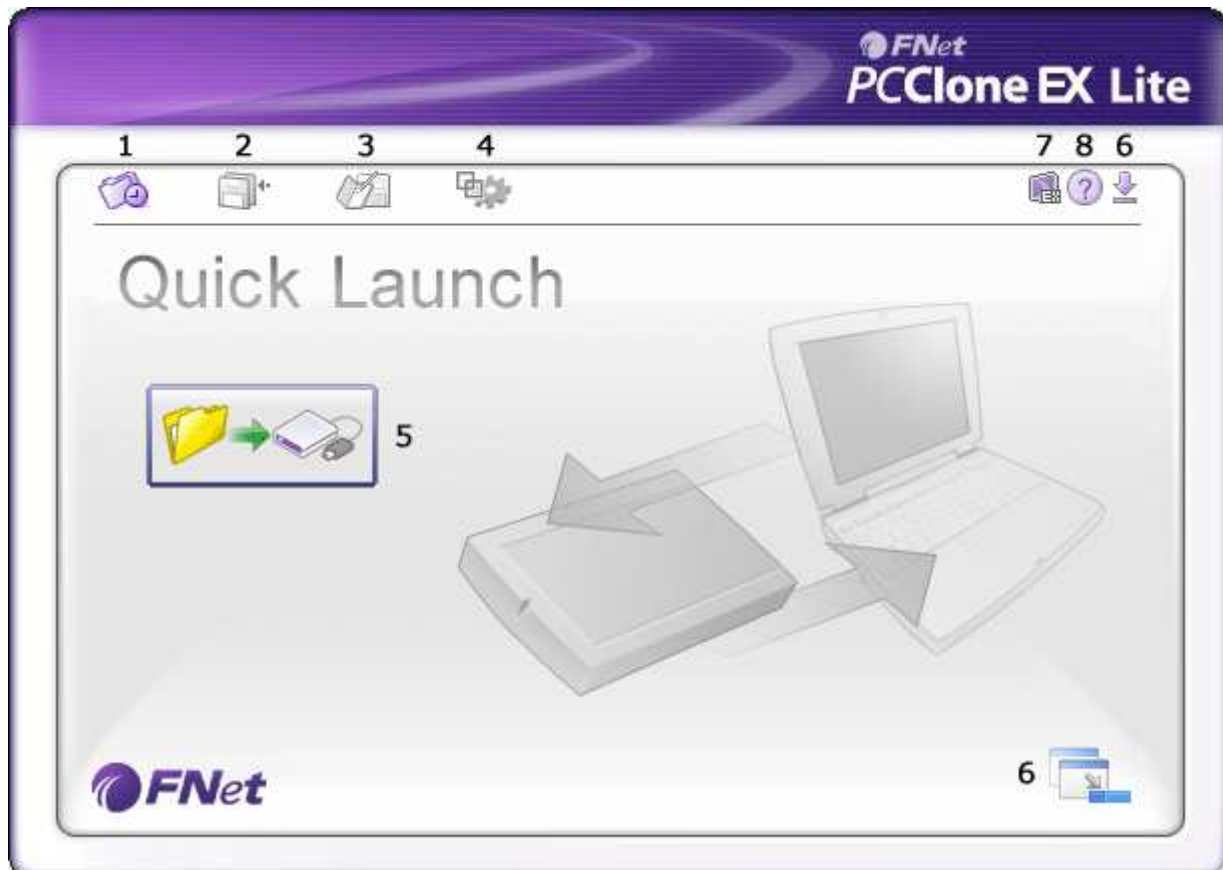


5. When the backup is in progress, PCClone EX Lite diagram will be blinking at the notification area. There is a dialog box will be displayed the progress every single 10 percentages.



6. After the backup is completed, PCClone EX Lite diagram at notification area will appears the "backup finished".

Quick Launch



1. [Quick Launch.](#)
2. [File Backup.](#)
3. [File Manager.](#)
4. [Setup.](#)
5. File Backup.
6. Minimized.
7. [About.](#)
8. [Help.](#)

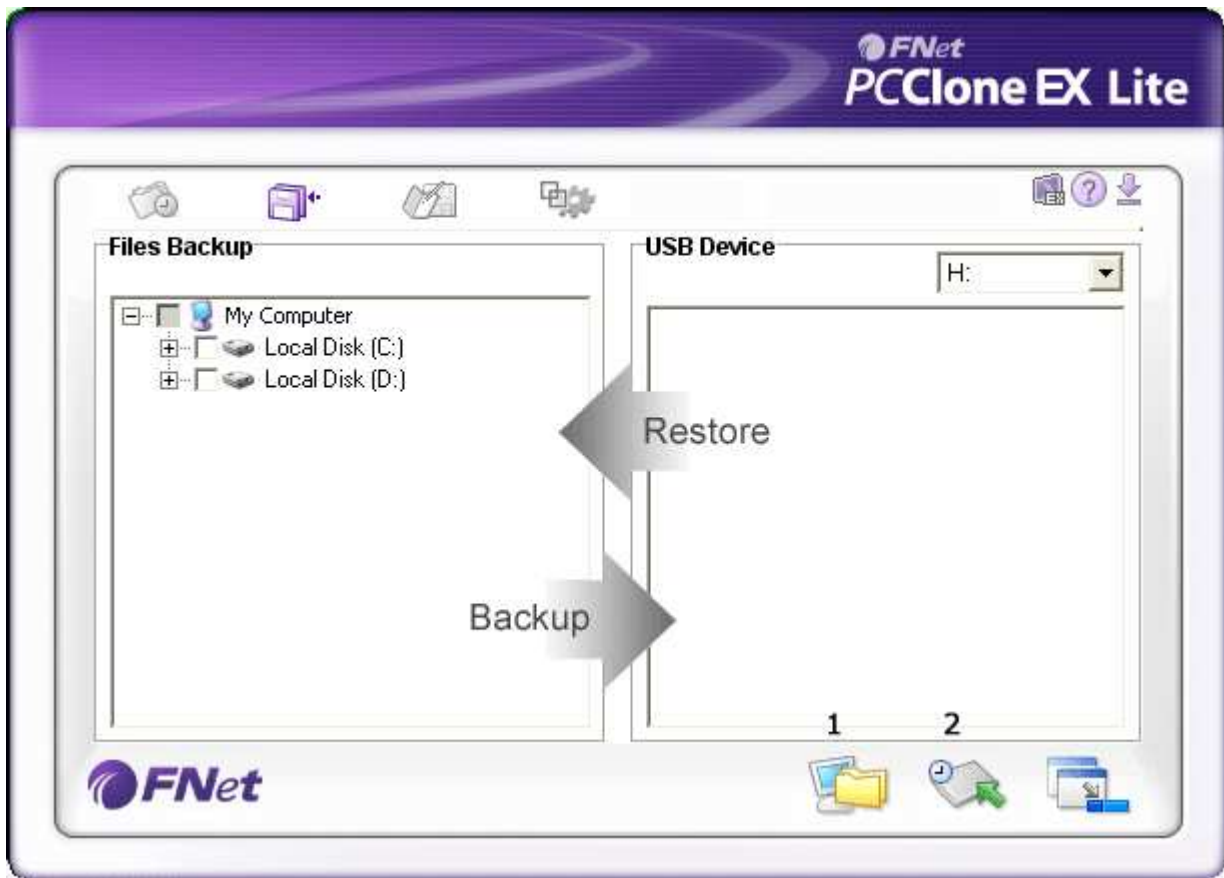
Quick File Backup

Users can directly execute "File Backup" from Quick Launch, or use their own "[hot key](#)", only one step, and the system data will be backed up easily. (For the first time using, please refer to the subject of "[File Backup](#)", or setup your own hot key in "[Setup](#)".)



1. Please plug the external USB HDD into PC, and turn on the power.
2. Execute PCClone EX Lite.
3. Go on PCClone EX Lite /Quick Launch screen.
4. Click "File Backup".
(Users can also use the [hot key](#) they previously set to backup.)
5. Appearing a dialog screen, please click "Start" to backup.
6. When backup is in progress, the widow shows progress and proceed time)
7. When backup is done, click "OK" for backup finish! (The file backup has been successfully through PCClone EX Lite into USB HDD.)

File Backup

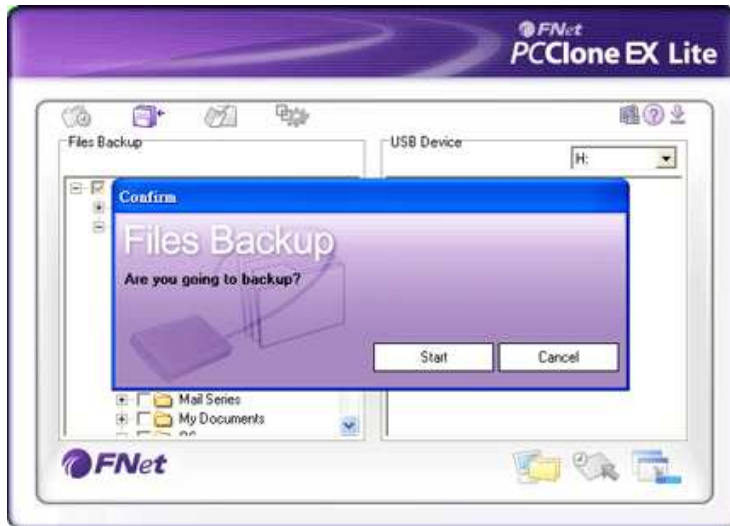


1. File Backup.
2. [File Restore](#).

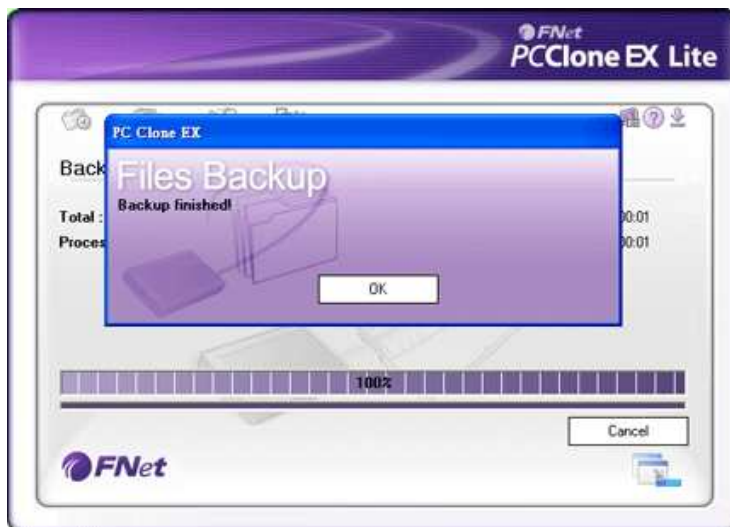


1. Please plug the USB HDD into the computer, and turn on the power.
2. Execute PCClone EX Lite.
3. Click "File backup".
4. Select folders / drives from the fix device.
5. Set one of USB devices for backup.
(Please refer to "[Setup](#)", and then set some options for the first time using.)

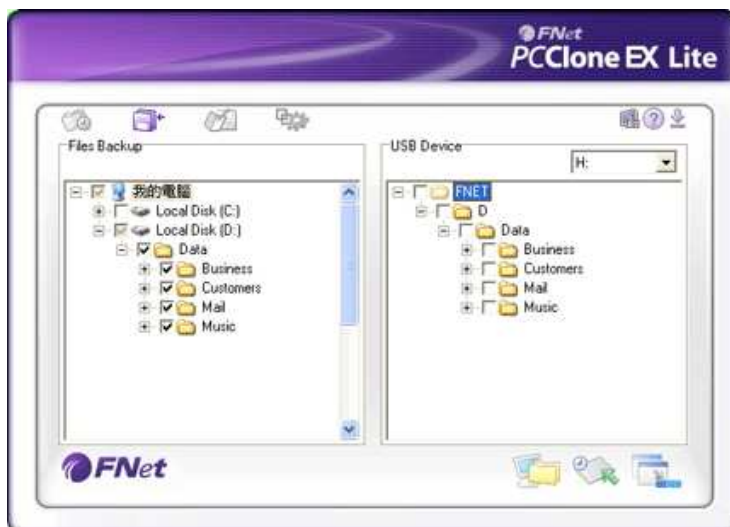




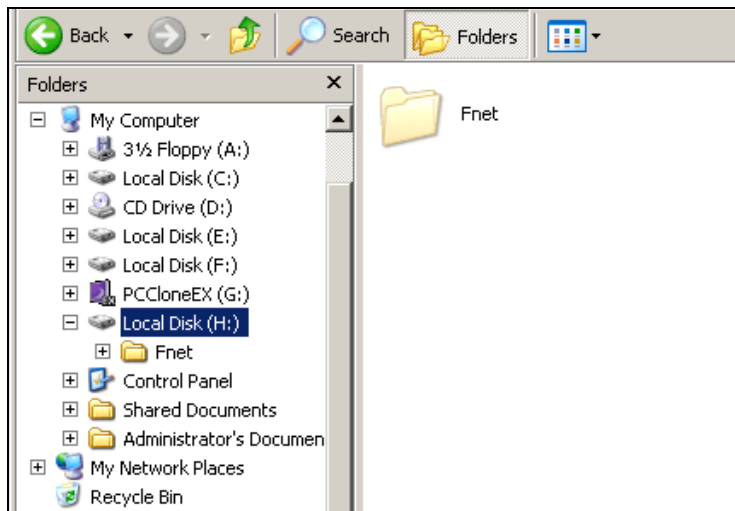
6. Select "Backup" and press "Start" to start.



7. Backup is completed, please press "OK".

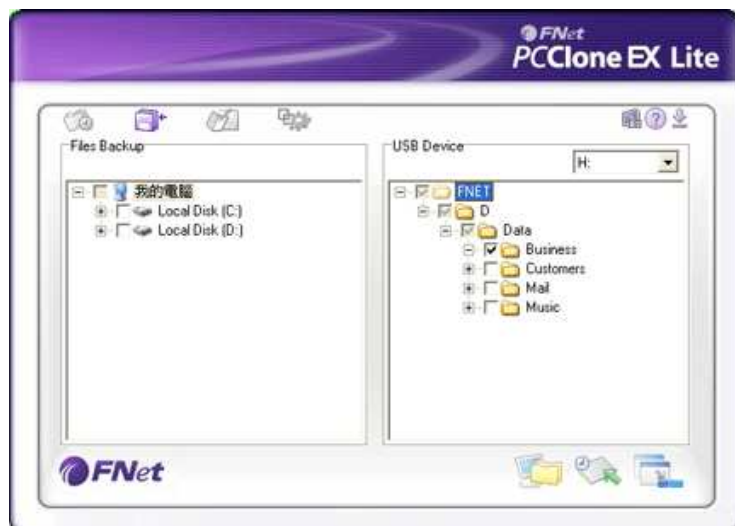


8. The selected folders have been moved from the fixed device to the USB device successfully.

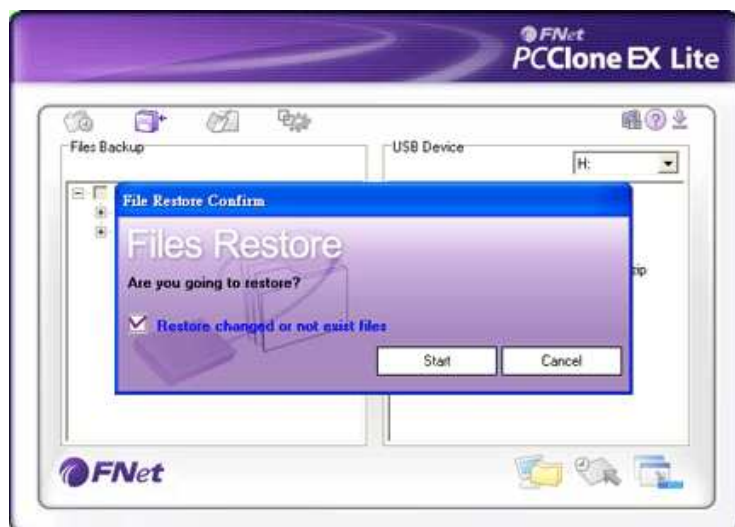


9. There is a hidden root directory F: FNet in the USB device, all the file backups are kept in there. Be careful, don't delete it carelessly.

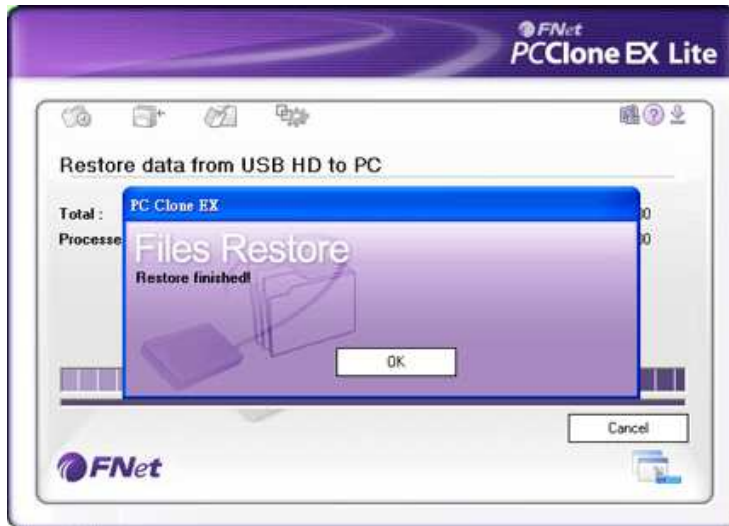
File Restore



1. Please plug the USB HDD, and turn on the power.
2. Execute PCClone EX Lite.
3. Go on the PCClone EX Lite screen.
4. Click "File Backup".
5. Select folders/files of USB device you would like to restore.

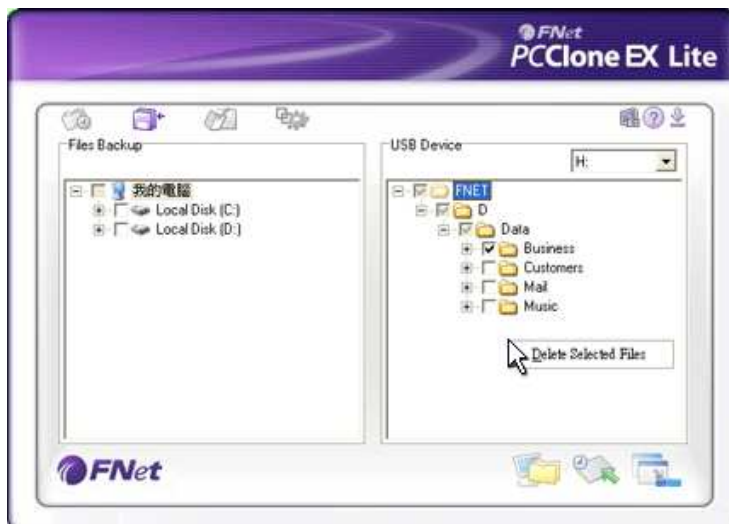


6. Click "Restore", then press "Start" to start.

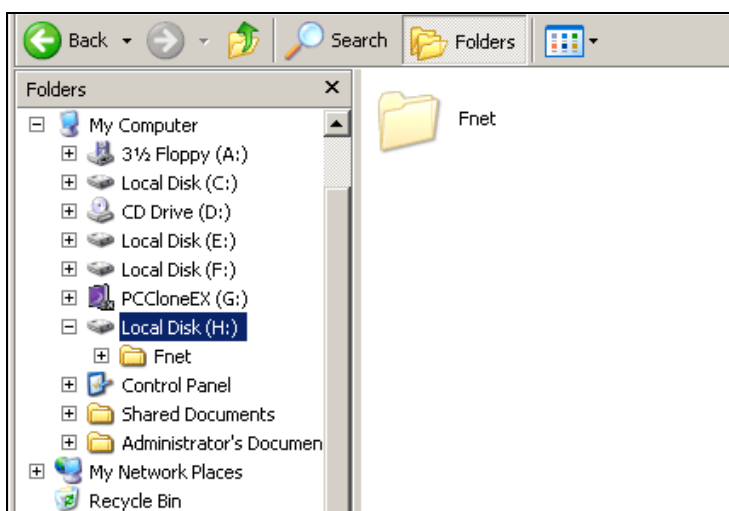


7. When "Restore" is finished, please press "OK".

Erase File Backup

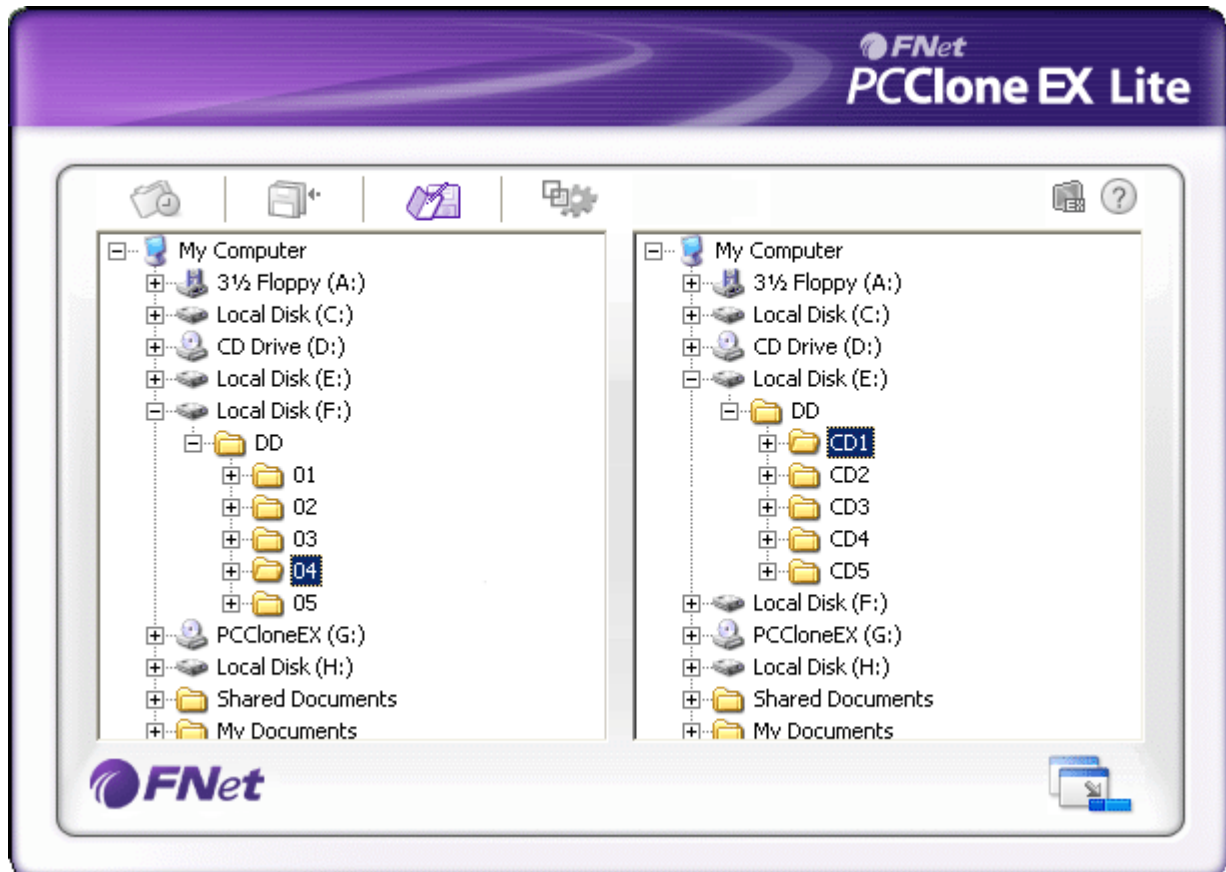


1. Please plug USB HDD, and turn on the power.
2. Execute PCClone EX Lite.
3. Go on PCClone EX Lite screen.
4. Select the "File backup" of USB Device, then, right click the mouse to click "Delete select Files", all select files in the USB device will be deleted.



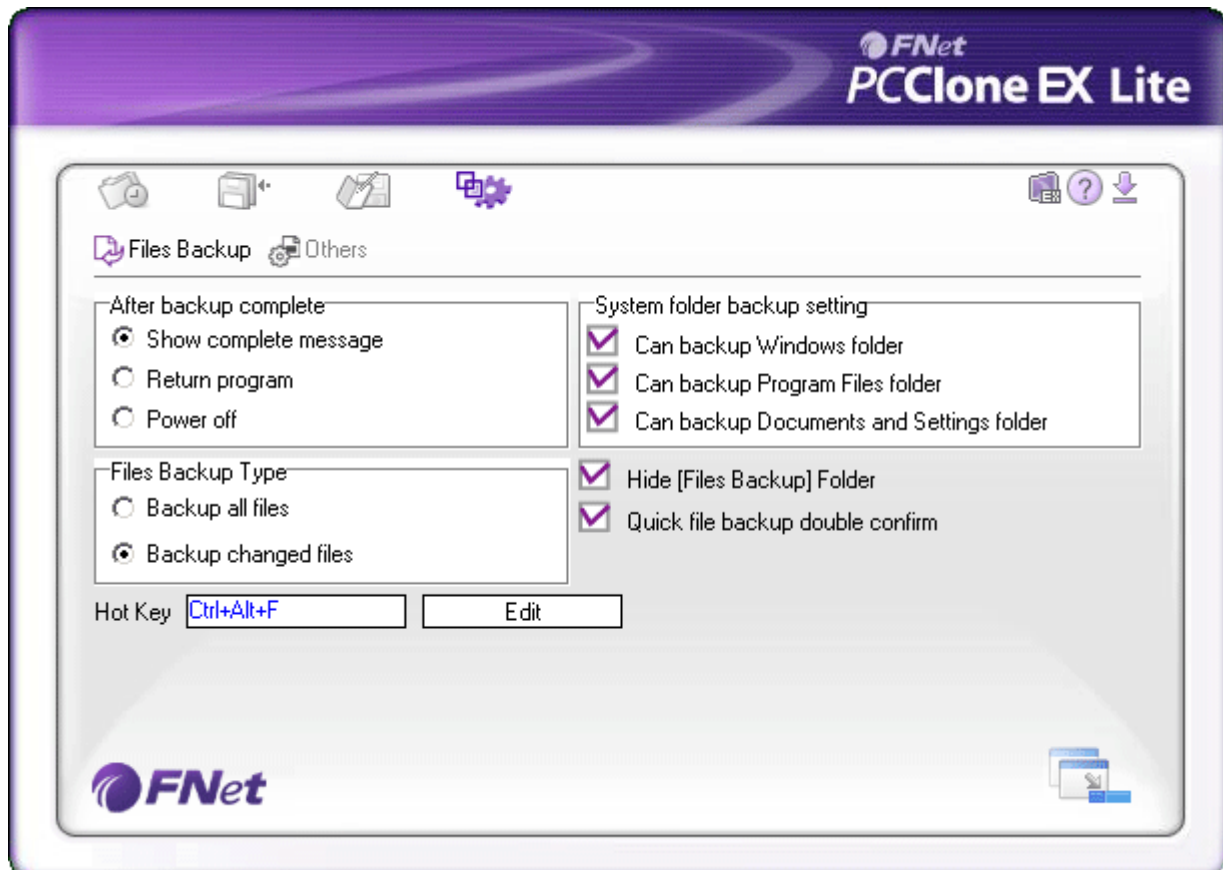
5. Otherwise, delete the root directory F: FNet directly; it will also work.

File Manager



PCClone EX Lite File Manager is the same function as Windows Explorer. Directly cut and paste folders/files between two windows of local and USB HDD. It is convenient for users who can review/manage/ move/access their folders/files directly without clicking the "My computer" or "Windows Explorer".

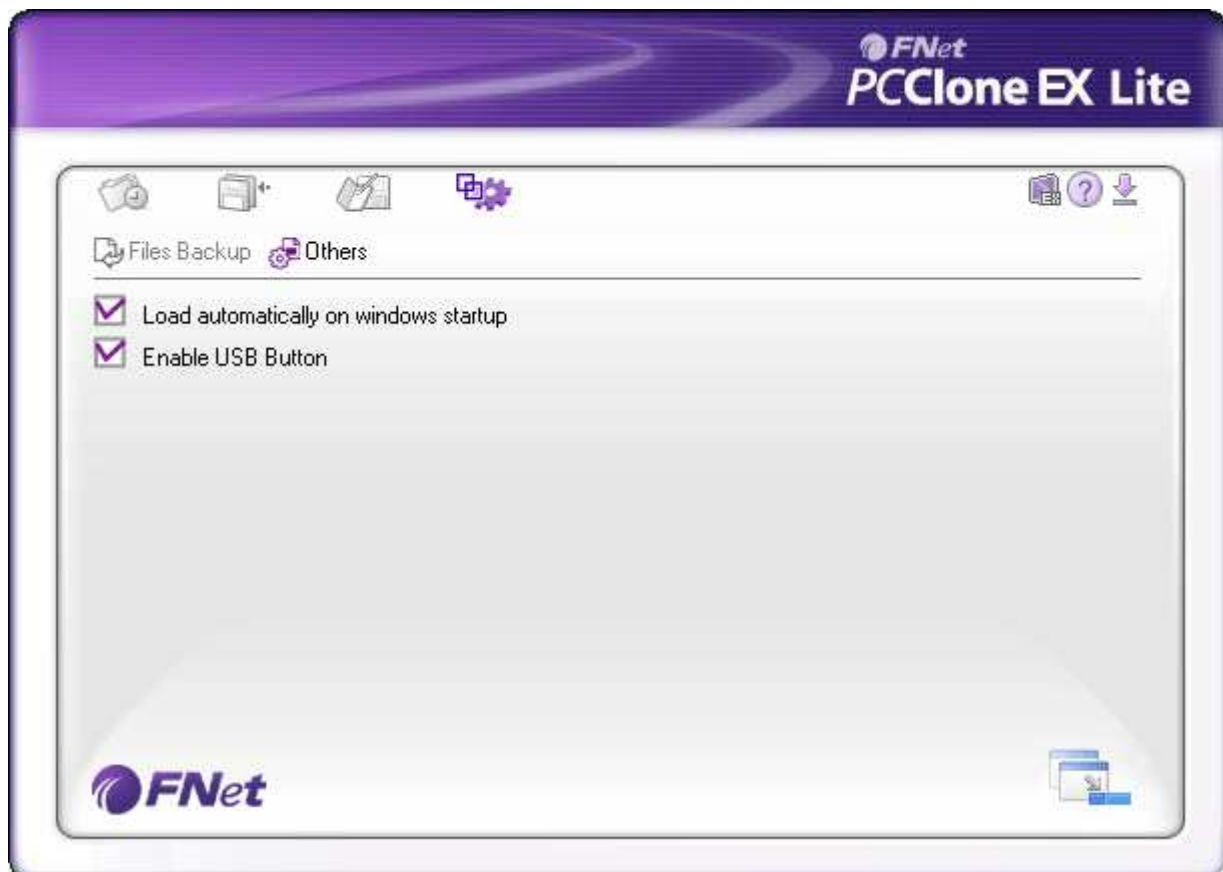
File Backup setting



The options of File Backup setting as the followings:

- After backup completing.
- Files Backup Type.
- Hot key.
- System folder backup setting.
- Hidden "File backup" folder.
- Quick file backup double confirmation.

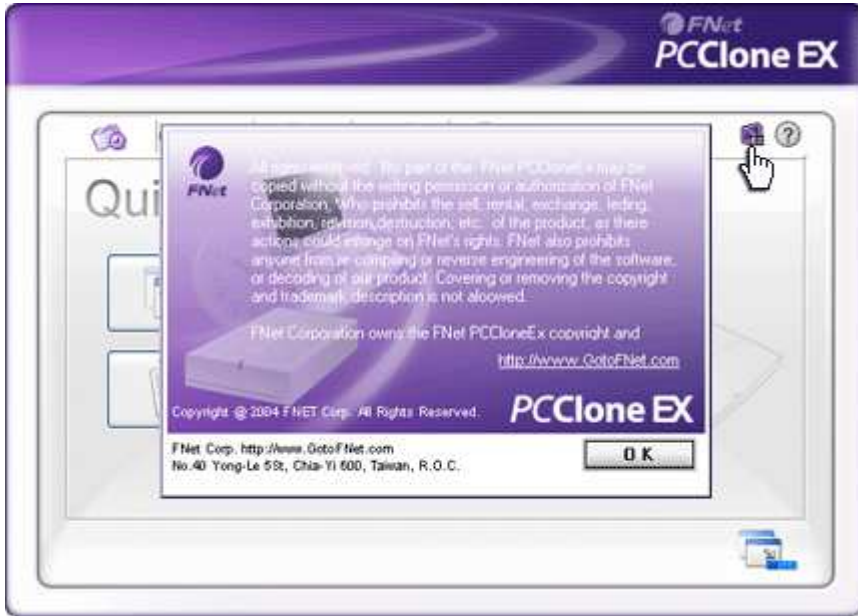
Others



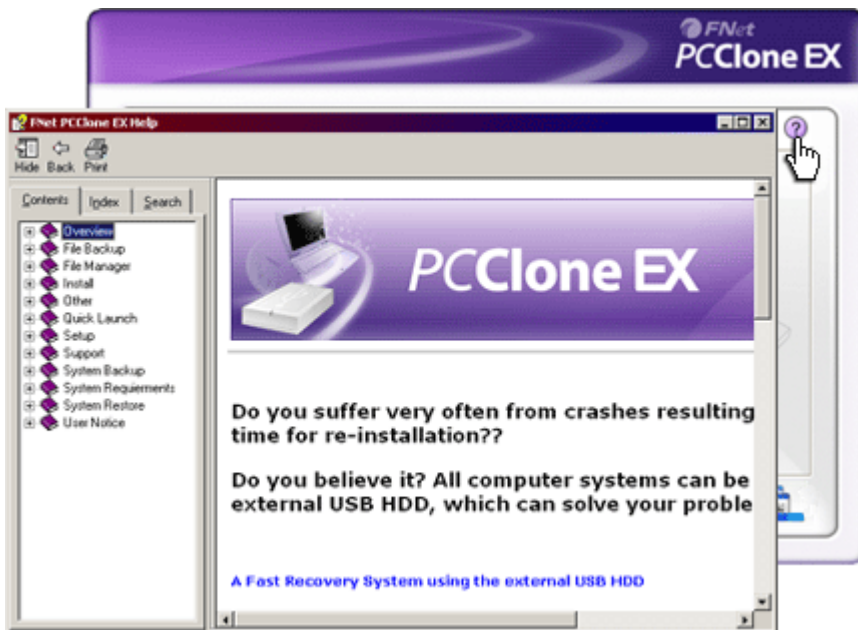
There are two options :

- automatically on Windows startup.
- Enable USB button.

Other



Concerning PCClone EX Lite spec, please click the icon of "PCClone EX Lite" on the right side of upper corner of the screen , or right click the icon of "PCClone EX Lite" in the notification area.



Please click the icon of "PCClone EX Lite"on the right side of upper corner of screen,"About PCClone EX "dialog will display and assist to recognize PCClone EX Lite.

Technical Support and Services

FNet Corp. is a professional R&D software company. Our software solutions bundled and cooperated with many hardware manufacturers. Therefore, FNet is only in charge of software technical problems and what suggestion you want to give FNet. Please see the contact below. Concerning the hardware problem please kindly connect with hardware manufacturers whose contact please refer to the printing box / the registration card of the hardware commodity.



After Service

Thank you for purchasing FNet's Product. In order to obtain the complete service from FNet, please complete and return the registration card to us, or register on-line. We will use this information to notify you of new product announcements and product upgrades.



Technical Support

For additional information you can visit our website at <http://www.GotoFNet.com>. If you need technical support, please e-mail your questions to service@gotoFNet.com, or fill in [Tech Support Request](#), or our head quarter and branch offices (phone numbers are listed at the last page) for direct assistance. Our professional Customer Support and Technical Support engineers will be glad to provide the service to you.

Contact us

FNet Corp. is a professional R&D software company. Our software solutions bundled and cooperated with many hardware manufacturers. Therefore, FNet is only in charge of software technical problems and what suggestion you want to give FNet. Please see the contact below. Concerning the hardware problem please kindly connect with hardware manufacturers whose contact please refer to the printing box / the registration card of the hardware commodity.

Taiwan

Headquarter

No.40 Yong-Le 5St, Chia-Yi 600, Taiwan.

Tel: +886-5-236-6630

Fax: +886-5-286-2872

<http://www.GotoFNet.com>

fnet@gotofnet.com

Taipei

Room 307, 3F., Building E, No.19-13, Sanchong Rd., Nangang District, Taipei City 115, Taiwan.

Tel: 886-2-2655-2833

Fax: 886-2-2655-2832

<http://www.GotoFNet.com>

taipei@gotofnet.com

Free technical service [Skype: fnettaiwan](#)

China / HongKong

Hong Kong

Tel: +852-81990126

china@gotofnet.com

The line will be automatically transfered to Taiwan, and our Customer Support will serve in Mandarin.

USA

USA

Tel: +1-626-9214633

This phone number will be switched to Taiwan office, please notice the office time from 9:00 A.M. to 6:00 P.M. of Taipei time (GMT +8), it is the same as L.A. 6:00 P.M. ~ 3:00 A.M., N.Y. 9:00 P.M. ~ 6:00 A.M., or email to agnes@gotofnet.com, we will reply ASAP. About technical problem, please fill with our [Tech Support Request](#).

Others

General Information : service@gotofnet.com

Sales Information : sales@gotofnet.com

Customer Service : For product information and customer assistance : service@gotofnet.com

Feedback : We welcome your feedback and suggestions on our products : support@gotofnet.com

Technical Support : For technical support issues, please initiate a : [Tech Support Request](#)

Business Development : Companies or individuals who are interested in partnerships and alliances with FNet, please contact : service@gotofnet.com

Legal Adviser

Wang Zeng-Wan

Yu Jui-Hua