



MANUAL

EM7071 - hdMEDIA High-Definition Media Player

WWW.EMINENT-ONLINE.COM

EM7071 - hdMEDIA High-Definition Media Player



Warnings and points of attention

Repairing of the product should be done by qualified Eminent staff!

Table of contents

1.0 Warranty conditions.....	3
2.0 Introduction	3
2.1 Functions and features	4
2.2 Packing contents	4
3.0 Explanation of the remote control	5
3.1 Explanation of the buttons by group.....	6
4.0 Mounting a hard disk	9
5.0 Connecting your hdMEDIA	10
5.1 HDMI (recommended)	10
5.2 Composite	10
5.3 Component (Y/Pb/Pr)	10
5.4 Audio connections	10
5.5 Selecting TV modus	11
5.6 Connecting to your computer with the USB cable	12
5.7 Connecting to your network	12
6.0 Configuring your hdMEDIA for your network	12
6.1 Setting the language.....	12
6.2 Network settings	13
6.3 Formatting the hard disk and installing the NMT programs	15
6.3.1 Installing the NMT programs through the Internet	15
6.3.2 Installing the NMT programs using a USB stick	15
6.3.3 Enabling the NMT Applications	16
6.4 Setting the work group on your computer (optional)	16
6.5 Setting the work group on the hdMEDIA	17
7.0 Accessing the hdMEDIA through your network	17
7.1 Assign a drive letter to your hdMEDIA	17
7.2 Add files to your hdMEDIA with the network connection	18
7.3 Connect the hdMEDIA using your web browser	19
7.4 Using FTP	19
8.0 Add files to your hdMEDIA with a USB connection	20
8.1 Driver installation	20
8.2 Driver usage	21
8.3 Add files	21
8.4 Safely remove the mass storage device	21
9.0 Media playback.....	22

9.1 Media playback from the hard disk	22
9.2 Media playback from a USB device	22
9.3 Media playback from your computer	23
9.3.1 Create a UPnP server.....	23
9.3.2 Playback.....	24
9.4 Share media with another hdMEDIA player	25
10.0 Web services.....	25
10.1 Watch movies or listen to music online	25
10.2 The Transmission module.....	27
10.2.1 Configuration	27
10.2.2 Using the Transmission module.....	27
10.3 Usenet module	29
10.3.1 Configuring the Usenet module.....	29
10.3.2 Using the Usenet module.....	30
11.0 Using the compact media server.....	31
11.1 Software installation.....	31
11.2 Media server setup	32
11.3 Selecting your computer as a media source	33
12.0 Frequently asked questions	33
13.0 Service and Support	35

1.0 Warranty conditions

The five-year Eminent warranty applies to all Eminent products unless mentioned otherwise before or during the moment of purchase. When having bought a second-hand Eminent product the remaining period of warranty is measured from the moment of purchase by the product's first owner.

The Eminent warranty applies to all Eminent products and parts inextricably connected to and/or mounted on the main product. Power supply adapters, batteries, antennas and all other products not integrated in or directly connected to the main product and/or products of which, without reasonable doubt, can be assumed that wear and tear show a different pattern than the main product are not covered by the Eminent warranty. Products are not covered by the Eminent warranty when subjected to incorrect/improper use, external influences and/or when opened by parties other than Eminent.

2.0 Introduction

Congratulations with the purchase of this high-quality Eminent product! This product has undergone extensive testing by Eminent's technical experts. Should you experience any problems with this product, you are covered by a five-year Eminent warranty. Please keep this manual and the receipt in a safe place.

Register your product now on www.eminent-online.com and receive product updates!

2.1 Functions and features

The Eminent EM7071 hdMEDIA High-Definition Media Player enables you to view or listen to movies, music and photos on your television or home cinema set in high definition! Use the HDMI 1.3 connection and enjoy the crystal clear image and sound. You can retrieve the different kinds of media from computers or hard disks in your network, directly from a USB stick or digital camera and even from the Internet. On the Internet you can watch TV channels or download movies and music using the Transmission and Usenet modules.

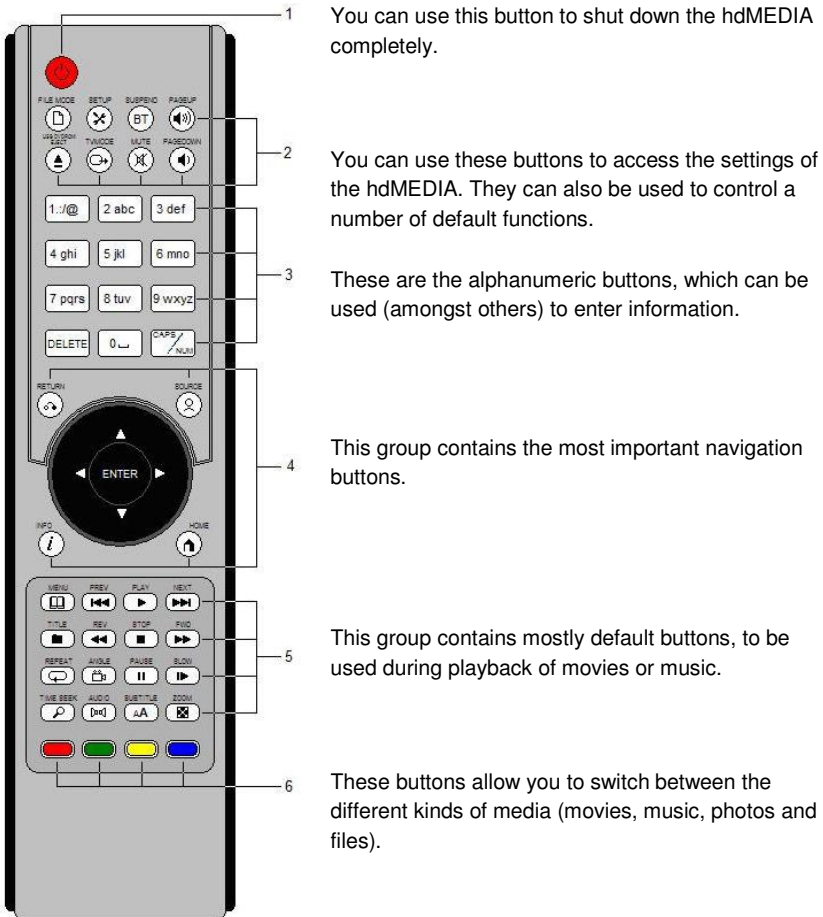
2.2 Packing contents

The following parts need to be present in the packing:

- EM7071-B, hdMEDIA High-Definition Media Player.
- Power adapter.
- HDMI cable.
- Optical cable.
- Remote control
- USB cable (A-B male).
- Manual.
- CD-ROM.

3.0 Explanation of the remote control

In this chapter we will explain the different functions of the remote control. The image below shows the button groups, after which the function of each button in each group will be explained.



3.1 Explanation of the buttons by group

In this paragraph we will explain the functions of the buttons in each button group:

Group 1



Explanation

Power:

- By pushing this button you can shut down the hdMEDIA completely. Push this button again to start the hdMEDIA.

Group 2



Explanation

File Mode:

- Press this button to show available file options (Mark/Copy/Paste).

Setup:

- This button allows you to switch to the settings of the hdMEDIA at any given time.
- During playback of a movie you can use this button to adjust the contrast and brightness of the image.
- By pushing down this button together with the 'Play' button you can unlock the remote control (if necessary).

Suspend (Zzz):

- Use this button to switch the hdMEDIA to sleep mode and to disable the sleep mode.

Page Up:

- When in the menu of the hdMEDIA, you can use this button to go to the next page of a file list.
- During playback of a file, you can use this button to increase the volume.

USB DVD ROM Eject:

- Use this button to eject an external DVD-ROM drive (if connected).

TV Mode:

- By pushing this button, followed by one of the numeric buttons, you can choose between the different TV modes. The possible modes are:

TV Mode + 0 = Auto TV mode

TV Mode + 1 = Component/Composite NTSC 480i

TV Mode + 2 = Component/Composite PAL 576i

TV Mode + 4 = HDMI/Component 720p50

TV Mode + 5 = HDMI/Component 1080i50

TV Mode + 6 = HDMI/Component 1080p50

TV Mode + 7 = HDMI/Component 720p60

TV Mode + 8 = HDMI/Component 1080i60



TV Mode + 9 = HDMI/Component 1080p60

TV Mode + Caps/Num = switches between 50 and 60 Hz

Mute:

- Use this button to mute the sound.

Page Down:

- When in the menu of the hdMEDIA, you can use this button to go to the previous page of a file list.
- During playback of a file, you can use this button to decrease the volume.

Group 3



Explanation

Alphanumeric buttons 0 to 9:

- When entering characters you can use these buttons for the numbers 1 to 9 and letters and punctuation marks as shown on the button itself.

Caps/Num:

- Use this button to enable or disable Numlock and/or Capslock.

Delete:

- Use this button to remove any characters you entered.

Group 4



Explanation

Return:

- Use this button to return to the previous menu item.

Source:

- When in the menu, you can use this button to view the available media sources.
- During playback of a DVD you can use this button to repeat a scene or title.

Info:

- When in the menu, you can use this button to view information about a file, such as size and format.
- During playback of media you can display a progress bar and information about the audio or video codec.

Home:

- Use this button to switch to the main menu at any time.
- During playback of a DVD you can use this button to repeat a section, the beginning and end of which you can determine yourself.

Arrows:

- Use this button to navigate through the menu.
- During playback of a DVD you can use the up and down arrows to select a scene.



Group 5



Enter:

- Use this button to confirm a command.

Explanation

Menu:

- During playback of a DVD you can use this button to switch back to the menu of the DVD at any time.

Prev:

- During playback of media you can use this button to select the previous scene or song.

Play:

- Use this button to playback the selected media file.

Next:

- During playback of media you can use this button to select the next scene or song.

Title:

- At the moment this button does not have a function.

Rev:

- During playback of media you can use this button to rewind. Hold down the button to increase the speed 2, 4 or 8 times.

Stop:

- Use this button to stop playback of a media file.

Fwd:

- During playback of media you can use this button to fast forward. Hold down the button to increase the speed 2, 4 or 8 times.

Repeat:

- Use this button to repeat the media file that is being played back.

Angle:

- If supported, use this button to switch between different camera angles during playback of a DVD.

Pause:

- Use this button to pause playback of a media file.

Slow:

- Use this button to slow down the playback of a media file. Hold down the button to increase the slow down rate by 2, 4 or 8 times.

Time Seek:

- Use this button to search by time within a media file. After pushing this button, you can enter a specific amount of time(for instance 07:30) after which the hdMEDIA will jump to that part of the movie or song.

Audio:

- If a media file has multiple audio tracks, you can use this button to



choose between those tracks.

Subtitle:

- During playback of a DVD or video file you can use this button to turn the subtitles on or off. By holding down the button you can also browse through the available languages.



Zoom:

- During playback of a movie you can use this button to zoom in on the image. By repeatedly pushing the button you can zoom in 100%, 133%, 200% or 400%.

Group 6

Explanation



Red:

- Use this button to immediately view all available movies within the selected media source.



Green:

- Use this button to immediately view all available music files within the selected media source.



Yellow:

- Use this button to immediately view all available photos within the selected media source.



Blue:

- Use this button to immediately view all available files within the selected media source.

4.0 Mounting a hard disk

It is not necessary to mount a SATA hard disk into the hdMEDIA since you are able to select many sources for media files. However, if you want to make full use of all the possibilities of the hdMEDIA you will need to mount a hard disk. This will also have a positive performance impact on other functions of the hdMEDIA. Follow the instructions below to mount a hard disk:

1. Undo the screws on all four corners on bottom of the device.
2. Remove the lid.
3. Lower the SATA hard disk into the hdMEDIA. Push the SATA hard disk towards the connectors until both connections are locked down tight.
4. On the bottom of the hdMEDIA you will find four screw holes. If you correctly placed the hard disk into the hdMEDIA, these holes should be in line with four holes in the hard disk itself. Screw in the four supplied screws to keep the hard disk in place.
5. You can now place back the lid and screw in the thumb screws at the bottom of the device.

Note! If this is the first time this hard disk is used, it will need to be formatted. This will be explained in chapter 6.3.

5.0 Connecting your hdMEDIA

After mounting the hard disk, you can connect the hdMEDIA to your television or home cinema set. This can be accomplished in several ways, which will be explained below:

5.1 HDMI (recommended)

As far as image quality is concerned, you will obtain the best results by connecting the hdMEDIA to a television set using a HDMI cable. The television set will of course need to have a HDMI or DVI port. In case of a DVI port you can connect the hdMEDIA to your television set using a DVI cable in combination with a DVI/HDMI adapter plug (sold separately).

5.2 Composite

If you want to connect the hdMEDIA to a television which does not have a HDMI connection, you can connect the hdMEDIA using a composite cable (sold separately). This cable has a yellow plug used for video and a white and a red plug both used for sound. Connect the yellow plug to the yellow cinch connection on the hdMEDIA, connect the white plug to the white cinch connection on the hdMEDIA and connect the red plug to the red cinch connection on the hdMEDIA. Now, connect the yellow plug on the other side of the composite cable to the corresponding cinch connection on your television set. The red and white plugs can be connected to the red and white cinch connections on your television set (AUDIO IN).

5.3 Component (Y/Pb/Pr)

If your television set has a component input, you can use a component cable (sold separately). Connect the red plug to the red component connection on the hdMEDIA, connect the blue plug to the blue component connection on the hdMEDIA and connect the green plug to the green component connection on the hdMEDIA. Afterwards, connect the red, blue and red plugs on the other side of the component cable to the corresponding component input connections on your television set.

Note! The red component cinch is not an audio output cable!

5.4 Audio connections

There are several different ways to enjoy the digital sound that the hdMEDIA can produce. You can use the enclosed HDMI cable if your television set has HDMI audio support.

The best way is by connecting the optical cable to the optical input on your Dolby Digital or DTS multichannel decoder. This allows you to enjoy the high quality 5.1 multichannel audio tracks on many video files.

If you do not have a multichannel audio decoder, you can connect the red and white audio plugs of the 'AV-out' cable on your television or receiver to achieve a '2.0' audio effect.

In case you have a DTS or Dolby receiver with HDMI-audio/video input, you can also use this device and connect it to the hdMEDIA. There is no need for the optical cable when using a DTS or Dolby receiver.

Note: Do not forget to remove the cover on the tip of the supplied optical cable before using it.

5.5 Selecting TV modus

After connecting the hdMEDIA you will need to use the remote control to select the correct TV modus in order for video and audio to function. As explained in chapter 3, there are a number of choices, depending on the connection method (composite or HDMI) and the connected television set. Push the button 'TV Mode' on the remote control once (aim the remote control to the front of the hdMEDIA) and push one of the alphanumeric buttons. The available choices are:

Composite connection:

Button combination	Mode
TV Mode + 1	Component/Composite NTSC 480i
TV Mode + 2	Component/Composite PAL 576i

HDMI connection:

Button combination	Mode
TV Mode + 4	HDMI/Component 720p50
TV Mode + 5	HDMI/Component 1080i50
TV Mode + 6	HDMI/Component 1080p50
TV Mode + 7	HDMI/Component 720p60
TV Mode + 8	HDMI/Component 1080i60
TV Mode + 9	HDMI/Component 1080p60
TV Mode + Caps/Num	Switches between 50 and 60 Hz

After choosing the correct modus, an image should immediately appear on your television screen. If not, you will need to configure your television to make use of its HDMI port. Consult the manual of your television set or ask the manufacturer to find out how to accomplish this.

Note! If you do not know which mode is the most suitable for your setup, you can also choose TV Mode + 0. The hdMEDIA will then automatically set the most suitable modus.

5.6 Connecting to your computer with the USB cable

You can connect the hdMEDIA as a 'USB mass storage device' to your computer to add or remove files. On the back of the hdMEDIA you will find a 'USB' port. Connect the enclosed USB cable to this port. Connect the other end of the USB cable to your computer.

The hdMEDIA is now in 'USB mode', therefore you will not see any image on your television. Do note that you cannot move files at this moment. Follow the instructions in chapter 8 to continue.

Hint! It is not necessary to move files using the USB cable. You can also move files through your network. Go to chapter 5.7 to continue with setting up a network connection.

5.7 Connecting to your network

The hdMEDIA is also equipped with a network port, allowing the device to be coupled to your network. This enables you to playback media from the computers in your network to your television or home cinema set. It will also enable you to use the hdMEDIA as a network storage device, to view YouTube movies and other Internet media and even to download movies and music, using the Transmission module.

On the back of the hdMEDIA you will find a LAN port. Connect a network cable to this port. You can connect the other end of the cable to one of the LAN ports of your router or switch. The hdMEDIA is now connected to your network. You will need to change a number of settings in the hdMEDIA before it truly becomes a part of the network. These settings can be found in chapter 6.

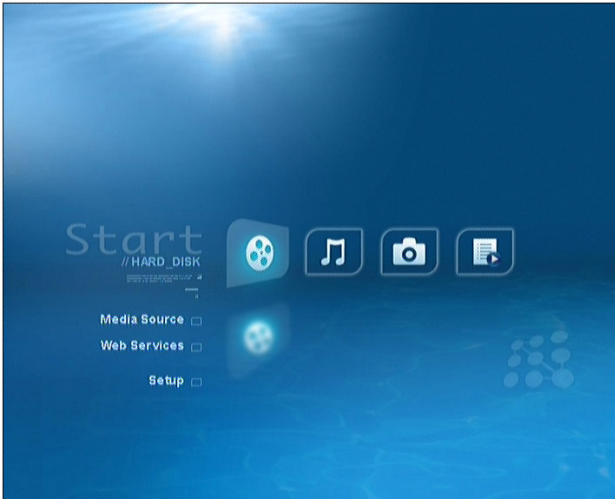
6.0 Configuring your hdMEDIA for your network

Before you can start using the hdMEDIA, there are a number of options that need to be configured. You can configure the hdMEDIA by using the remote control.

6.1 Setting the language

The first thing you may want to do is set the language of the menu. The default language of the hdMEDIA is English. If you wish to choose a different language you can follow the instructions below.

1. Make sure both the hdMEDIA and your television set are on and that they are connected as described in chapter 5. If all is well you should be able to see the opening screen of the hdMEDIA on your television set. It should look like this:



2. Use the arrow buttons to navigate to 'Setup'.
3. After selecting 'Setup', press the 'Enter' button on the remote control. You will now see a new menu.
4. Navigate to the 'Language' field. The default setting is 'English'.
5. Push the 'Enter' button to unfold the field.
6. Choose your preferred language and push the 'Enter' button.
7. Navigate to 'Save' and push the 'Enter' button.
8. The settings have now been saved and the language of the menu has been changed to your preference.
9. Push the 'Home' button on the remote control to return to the main page of the menu.

6.2 Network settings

To be able to use the network connection the hdMEDIA needs to obtain an IP address from your network router. In most situations the IP address will be obtained automatically after the hdMEDIA has been connected to your network as explained in chapter 6. If your router does not use DHCP to assign IP addresses, you will need to manually enter an IP address in the settings of the hdMEDIA. Follow the instructions below:

Note! Before you can configure the network connection you will need to have certain information at hand. You will need to know the Gateway or IP address of your router, as well as the Subnet Mask. You will also need to know the DNS addresses of your

Internet provider. The Gateway or IP address can be found in the manual of your router, you can consult your provider for the DNS addresses.

1. Use the arrow keys on the remote control to navigate to 'Setup'.
2. After selecting 'Setup', push 'Enter'. You will now see the setup screen.
3. Navigate to 'Network' and push 'Enter'.
4. Navigate to 'Mode' and push 'Enter'.
5. Choose 'Wired Manual IP' and push 'Enter'.
6. Navigate to 'save' and push 'Enter'.
7. After a few second the button 'configure IP' will appear.
8. Select 'configure IP' and push 'Enter'.
9. Enter an IP address for the hdMEDIA in the 'IP Address' field. This address should be in the range of your network. For instance, if the gateway of your router is 192.168.1.1, you can enter the IP address 192.168.1.200.
10. Enter the subnet mask of your router in the 'Subnet Mask' field. For instance 255.255.255.0.
11. Enter the primary DNS address of your provider in the 'Primary DNS' field.
12. Enter the secondary DNS address of your provider in the 'Secondary DNS' field.
13. Enter the IP address of your router in the 'Gateway' field, For instance 192.168.1.1.
14. Select 'save' and push 'Enter'.
15. Push 'Home' on the remote control to return to the main page of the menu.

Hint! Write down the IP settings here:

<i>IP Address</i>	: _____
<i>Subnet Mask</i>	: _____
<i>Gateway</i>	: _____
<i>Primary DNS</i>	: _____
<i>Secondary DNS</i>	: _____

If the information you entered is correct, the hdMEDIA has now partially been configured for your network. To make sure the computers in your network can find and access the hdMEDIA, the device will need to be made part of your network. This can only be done after the so-called NMT programs have been installed, as explained in chapter 6.3. After completing this chapter, you can follow the instructions in chapter 6.4 to add the hdMEDIA to your workgroup.

6.3 Formatting the hard disk and installing the NMT programs

The hdMEDIA is supplied with a number of programs, amongst others a FTP server, Samba Server and a Transmission module. These programs will need to be installed first. During installation the hard disk of the hdMEDIA will also be formatted, to make sure the hdMEDIA can use the disk. There are two methods of installing the programs, namely through the Internet or by using a USB stick. Both methods will be explained below:

6.3.1 Installing the NMT programs through the Internet

1. Make sure that your hdMEDIA is connected with your home network, and that a working Internet connection is available.
2. Use the arrow keys on the remote control to navigate to 'Setup'.
3. If you selected 'Setup', push 'Enter'. You will now see the setup screen.
4. Navigate to the option 'Maintenance' and push 'Enter'.
5. Navigate to the 'NMT setup wizard' button and push 'Enter'.
6. Select the option 'Fresh Setup' and push 'Enter'.
7. Navigate to the 'next' button and push 'Enter'.
8. Select 'next' again and push 'Enter'.
9. Choose the option 'Internet' and push 'Enter'.
10. Follow the instructions on your screen to format the hard disk and install the programs through the Internet. (Select 'ext3' when asked for the file system.)

6.3.2 Installing the NMT programs using a USB stick

If you own a USB stick you can use it to install the programs on your hdMEDIA. Follow the instructions below:

1. Make sure your computer is on.
2. Insert your USB stick into a USB port on your computer.
3. Your hdMEDIA came with a CD-ROM containing the NMT programs. Place this CD-ROM in the DVD or CD-ROM drive of your computer.
4. Open 'My Computer' (or another explorer if you are not using Windows) and open the contents of the CD-ROM.
5. Right click the file 'SYB8634.nmt' and choose 'Copy'.
6. Use your explorer to open the contents of the USB stick (a USB stick is usually shown as a drive, for instance G:).
7. Right click in the explorer window and choose 'Paste' to copy the file to your USB stick. Make sure the file does not get copied to a subfolder on your USB stick. It should be copied directly to the main folder.
8. After copying has finished you can remove the stick from your computer.
9. Now insert the USB stick into one of the USB ports of the hdMEDIA.

10. Use the arrow keys on the remote control to navigate to 'Setup' in the menu of the hdMEDIA.
11. If you selected 'Setup', push 'Enter'. You will now see the setup screen.
12. Navigate to the option 'Maintenance' and push 'Enter'.
13. Navigate to the 'NMT setup wizard' button and push 'Enter'.
14. Select the option 'Fresh Setup' and push 'Enter'.
15. Navigate to the 'Next' button and push 'Enter'.
16. Select 'Next' again and push 'Enter'.
17. Choose 'ext3'.
18. Select 'Next' and push 'Enter'.
19. You will see a warning. Select 'Next' and push 'Enter'.
20. Choose 'USB' and push 'Enter'.
21. Select 'Next' and push 'Enter'.
22. The installation is in progress. Wait until the installation is finished.
23. The hdMEDIA will reboot automatically. You can now unplug the USB stick.

6.3.3 Enabling the NMT Applications

After installing the NMT applications they should be enabled in order to use them.

1. Use the arrow keys on the remote control to navigate to 'Setup'.
2. If you selected 'Setup', push 'Enter'. You will now see the setup screen.
3. Navigate to the option 'NMT Applications' and push 'Enter'.
4. For optimal use, we recommend enabling 'Samba', 'Transmission' and 'myiHome'.
5. Navigate to the 'Start' button for the options you wish to enable.
6. Use the 'Enter' key on your remote to start the selected option. Starting an option will take a few seconds, and then switch the state to 'Enabled'.
7. Use the 'Home' key to exit the menu.

6.4 Setting the work group on your computer (optional)

If you are not sure what workgroup you are currently using, it is best to set all computers to use the same one. Follow the steps below to do this. The workgroup name is essential to allow computers to exchange data, and helps you to reach the hdMEDIA in an efficient way.

Windows XP:

1. Click 'Start' and then right-click on 'My Computer'.
2. Click on 'Properties' in the menu that appears..
3. Open the tab 'Computer Name'.
4. Click the button 'Change' to change the name and workgroup as you choose.
5. Click 'OK' to close the 'Properties' screen. You will have to restart your computer for the changes to become active.

Windows Vista:

1. Click 'Start' and then right-click on 'Computer'.
2. Click on 'Properties' in the menu that appears.
3. The Computer Name and workgroup will be shown in the centre of the screen.
4. To modify the name and workgroup, click the button 'Change'.
5. Change the name and workgroup in the new screen that appears.
6. Click 'OK' to close the screen. You will have to restart your computer for the changes to become active.

6.5 Setting the work group on the hdMEDIA

To make sure your computers can find and access the hdMEDIA, the device will need to be made part of the same work group as the other devices in your network. Follow the instructions below:

1. Use the arrow keys on the remote control to navigate to 'Setup' in the menu of the hdMEDIA.
2. If you selected 'Setup', push 'Enter'. You will now see the setup screen.
3. Navigate to the 'NMT setup wizard' button and push 'Enter'.
4. On the top of the page you will find 'Device Name'. For now you can keep the default name 'EM7071'. This is the name with which the hdMEDIA will appear in your network.
5. Enter the name of your work group in the 'Samba Workgroup'. This needs to be the same workgroup name that has also been set in your computers.
6. Select 'save' and push 'Enter'.

If you use one of your computers to view all devices in your network, the hdMEDIA should also appear. If this is not the case, check if the Samba service on the hdMEDIA is enabled. See chapter 6.3 for additional details.

7.0 Accessing the hdMEDIA through your network

Now that the hdMEDIA has become a part of your network and has been fitted with the required software, you can access the device through your network and fill it with media files (if a hard disk has been mounted) so you can view or listen to these media files on your television set or your computer. There are several methods of accessing the hdMEDIA. These methods will be explained below.

7.1 Assign a drive letter to your hdMEDIA

As explained in the previous chapter, all computers within your network can see the hdMEDIA. Because it is not very practical to search for your hdMEDIA using the Windows option 'Network locations' we will assign a drive letter to your mediaplayer.

This will make the hdMEDIA appear as a hard disk drive in Window Explorer. Follow the steps below.

1. Start your computer.
2. Open your Internet browser, e.g. Internet Explorer.
3. Clear the address bar and type in: '\\EM7071'.
4. Press 'Enter'.
5. If required: Type in the username 'nmt' and password '1234'.
6. Press 'Enter'.
7. A folder named 'share' will appear, among others. Click this folder with the right mouse button and select 'Map Network Drive'. A new window will appear.
8. Select a drive letter from the 'Drive' drop-down box.
9. Check the 'Reconnect at logon' Checkbox.
10. Click 'Finish'.

If you return to 'My Computer', you will see that a new drive has been added, with the drive letter that you have chosen and the name of your hdMEDIA.

7.2 Add files to your hdMEDIA with the network connection

You can use your hdMEDIA as a network drive. This will turn the hdMEDIA into a central storage device in your network, that can be used by all computers in your network to add files and to use these files. In this situation, you can use the hdMEDIA to play the media that has been added by the computers in your network on your television and hifi-set. To do this, you will first have to add media to the hdMEDIA. This chapter explains how you can do so. Follow the steps below:

1. We assume that you have followed the steps explained in chapter 7.1 on the computer that you will be using in this chapter.
2. Open 'My documents' and find a file that you want to copy to the hdMEDIA.
3. Right-click on the file and select 'Copy'.
4. Go to 'Start' and then to 'My computer'.
5. You will find the drive letter of the hdMEDIA here.
6. Open it by double-clicking.
7. You will see a number of folders, like 'Music' 'Photo' and 'Video'. These are the subfolders of the 'Share' folder that has been discussed in chapter 7.1.
8. Click the folder where you'd like to add the file to with the right mouse button and select 'Paste'.
9. The file will be copied to the folder on the hard disk of the hdMEDIA.
10. Repeat the steps to add multiple files to the hard disk drive of your hdMEDIA. You can also use your mouse to select multiple files and draw them to the right folder on the hdMEDIA.

7.3 Connect the hdMEDIA using your web browser

You have used Windows Explorer to manage the files on your hdMEDIA in the last paragraph. You can also use Internet Explorer or any other web-compliant browser to connect to the hdMEDIA. In order for this to work, the NMT applications should be installed and enabled as described in chapter 6.3.

You can browse the files on the hdMEDIA this way, and listen to the media files on the hdMEDIA, but you can also use the built-in Transmission module to download movies and music. More about the Transmission module can be found in chapter 10.2. You can connect to the hdMEDIA using your web browser by following the steps below.

1. Open your web browser, e.g. Internet Explorer or Mozilla Firefox.
2. Clear the address bar and type in 'http://', followed by the IP address that you have assigned to the hdMEDIA in chapter 6.2. Add ':8088' after the IP address (e.g. http://192.168.1.100:8088).
3. Press 'Enter'.
4. A new page will be displayed, that offers the choice of 'Media' or 'Transmission'. Choose 'Media' to browse the hard disk of the hdMEDIA, or choose 'Transmission' to manage your Transmission downloads.

Note: The usage of the Transmission module and other functions of the hdMEDIA will be thoroughly explained in chapter 10.

If you chose 'Media', four icons are displayed. These icons allow you to search movies, music, photos or other files. Follow the steps below if you want to watch a movie that is on your hdMEDIA:

1. Click on the first icon, the film reel. A number of folders will be displayed. Click the first icon (movie reel).
2. Open the folder containing the movie you want to see.
3. Click on the movie you want to see. Windows Media Player will be opened and you can play the movie.

Caution! Watching a movie over your network uses a lot of bandwidth. It is not recommended to do so if you have a slow network connection. If the movie playback in Windows Media player is stalling or choppy, it is better to first copy the movie file to your computer, and then watch the movie, or watch the movie on your TV.

7.4 Using FTP

After you have installed the NMT programs on the hdMEDIA, the FTP server is available. By using this FTP server, it is very easy to access the hdMEDIA from the outside, so you can access the hdMEDIA's hard disk from the Internet or from another computer in your network. By doing so, you can simply transfer or upload files to he

hard disk of the hdMEDIA. In other words: You can manage the hard disk externally by using your favorite FTP program. Examples of FTP programs: CuteFTP, FlashFXP, Ws-FTP etc.

1. Start your FTP program (We will use 'FlashFXP' as example).
2. Choose 'Quick Connect' or press the F8 key.
3. Fill in at 'Server' or 'URL' the IP-address of the hdMEDIA. In case you are connecting through the Internet you have to know your WAN IP-address.
4. A connection will be established with the hdMEDIA. A username and password will be asked.
5. Fill in at 'username': 'ftpuser'.
6. Fill in at 'password': '1234'.
7. You are now logged in. Now you can upload files to the hard disk of the hdMEDIA.

Before you can access the hdMEDIA through the Internet, you need to open port 21 towards the hdMEDIA's IP-address. How to accomplish this, can be read in the manual of the router or you can contact the router's manufacturer.

8.0 Add files to your hdMEDIA with a USB connection

If you have connected the hdMEDIA according to the instructions of chapter 5.6, your computer will detect a new hard disk. This hard disk is not added to the hard disk list of 'This Computer' by default. The hard disk is formatted with 'EXT3', which is unknown to Windows computers. You need a driver to be able to see the files on the hard disk. A freeware version of this driver is added to the enclosed CD-ROM.

8.1 Driver installation

Follow these instructions to install the driver:

1. Place the enclosed CD-ROM in the CD-ROM player or DVD-ROM player of your computer.
2. The CD-ROM will start automatically.
3. Choose 'English'.
4. Click 'Next'.
5. Select 'Install USB/EXT3 Driver'.
6. Click 'Next'.
7. The driver is being installed.
8. Click 'Next'.
9. Select 'I agree'.
10. Click 'Next'.
11. Click 'Next'.
12. Click 'Next'.

13. Click 'Next'.
14. Select 'Assign drive letter automatically upon plugging in a device the first time'.
15. Click 'Next'.
16. Click 'Next'.
17. Click 'Finish'.

8.2 Driver usage

After installing the driver you can set a drive letter to the hdMEDIA following these instructions.

1. Go to 'Start', then 'Control panel'.
2. Open 'IFS Drives'.
3. You will see a window with the available hard drives. One of these hard drives has three partitions without a drive letter.
4. The third is also the largest partition and is available for your files. Set a drive letter to this partition by clicking on the list option. Choose 'H:' for example.
5. The drive letter is set to this partition immediately. You can close this program.

8.3 Add files

You can now add files to the hdMEDIA.

Hint! You can also add files using a network connection. Go to chapter 6 for more information.

1. Open 'My Documents' and go the file that you want to copy to the hdMEDIA.
2. Right click on the file and select 'Copy'.
3. Go to 'Start', then 'This Computer'.
4. You will see the hdMEDIA as a hard drive (with the letter 'H:' from the example).
5. Double click on this drive to open it.
6. You will see the folders Music, Photo and Video. These are the subfolders of the 'Share' folder that has been discussed in chapter 7.1.
7. Click the folder where you'd like to add the file to with the right mouse button and select 'Paste'.
8. The file will be copied to the folder on the hard disk of the hdMEDIA.
9. Repeat the steps to add multiple files to the hard disk drive of your hdMEDIA.
You can also use your mouse to select multiple files and draw them to the right folder on the hdMEDIA.

8.4 Safely remove the mass storage device

When you are ready copying the files to the hdMEDIA, you need to remove the device safely following these instructions.

1. You will find the icon, as shown below in the system tray of your screen.



2. Double click on this icon.
3. Select 'USB Mass Storage Device' and click on 'Stop'.
4. Click 'OK'.
5. The hdMEDIA has been removed safely.
6. Remove the USB cable from your computer.

9.0 Media playback

After we have explained how to connect the hdMEDIA to your network and how to add movies, music and other files to the hard disk of the hdMEDIA, you are able to play the media on your TV. You can also play media right away on the computers of your network, and you can use the hdMEDIA to play media on the internet (e.g. YouTube movies). Next to all these options, you can also play media from your computer directly on your TV. The chapter will explain how you can do so.

9.1 Media playback from the hard disk

No further configuration is required to play media from the hard disk of the hdMEDIA. Follow the steps below to play media on the hifi-set or television connected to your hdMEDIA.

1. Make sure that your television and hdMEDIA are turned on, and that you see the menu of your hdMEDIA on your television screen.
2. Use the remote control to navigate to 'Media source'; and press the 'Enter' button.
3. Choose 'HARD_DISK' and press 'Enter'.
4. You will see four icons (movies, music, photo and other files).
5. If you want to watch a movie that you have copied to the hdMEDIA, select the film reel icon and press 'Enter'.
6. Select the folder 'Video' and press 'Enter'.
7. A list of movies on your hard disk will be displayed.
8. Select the movie you want to watch and press 'Enter'.
9. The movie will be played after a few seconds.

Use the same steps, but a different icon to play music or view your photos.

9.2 Media playback from a USB device

The hdMEDIA front connectors can be used to connect various USB devices, including hard disks or USB sticks. If you wish to play media from such a device, follow the steps below.

1. Make sure that your television and hdMEDIA are turned on, and that you see the menu of your hdMEDIA on your television screen.

2. Connect the USB device to an available USB port on the hdMEDIA.
3. After a few seconds the hdMEDIA will report "USB Device" has been found.
4. Use the remote control to navigate to 'Media source'; and press the 'Enter' button.
5. Choose 'USB_DRIVE_A1' and press 'Enter'.
6. You will see four icons. (Movies, music, photo and other files)
7. If you want to view photo's you have copied to the hdMEDIA, select the photo reel icon and press 'Enter'.
8. A list of available folders will be displayed.
9. Select the desired folder and choose the first photo to start.

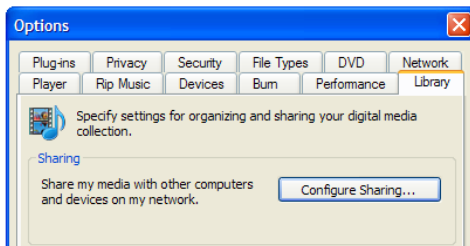
9.3 Media playback from your computer

If you want to play media that is stored on a computer in your network, you will have to change some configurations to be able to do this.

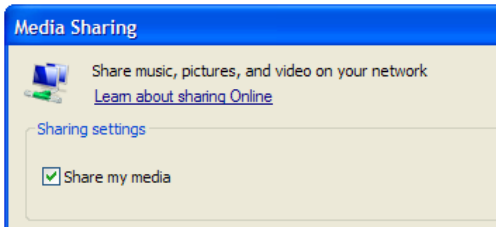
9.3.1 Create a UPnP server

Your computer does not share media by default. You will have to install a UPnP media server on your computer to add this functionality. If you are using Windows XP or Windows Vista, you can use the built-in UPnP media service of Windows Media Player 11. If you enable this option, your hdMEDIA can access the music library on your computer. Follow the steps below to enable this option:

1. Click 'Start'.
2. Click 'Programs'.
3. Click 'Windows Media Player '.
4. Click 'Tools', then 'Options...'. This screen will be displayed:



5. Go to the 'Library' tab in the left upper corner of the options window.
6. Now click 'Configure sharing...'.
7. Check the "Share my media" checkbox and click OK.



8. A list with detected devices will appear within a few seconds.
9. Click the name of your hdMEDIA, as set in chapter 6.4.
10. Click 'Allow'.
11. Click 'Ok'.
12. Click 'Ok'.
13. All files in the media library of Windows Media Player will be shared with your hdMEDIA from now on. The media library will be accessible using the remote control and display of the hdMEDIA.

Caution: Steps above are taken with Windows Media Player 11, available for download at <http://www.microsoft.com>.

Tip: Multiple programs that turn your computer into a UPnP media server are available for download on the internet, like tversity (www.tversity.com) or Twonkymedia (www.twonkymedia.de).

9.3.2 Playback

Now that your computer shares media files with your hdMEDIA, you can play these files on your television. Follow these steps to do so:

1. Make sure that your television and hdMEDIA are turned on, and that you see the menu of your hdMEDIA on your television screen.
2. Use the remote control to navigate to 'Media source'; and press the 'Enter' button.
3. In the field on the right side the name of your computer with a UPnP media server is displayed among other options. Select the name of your computer.
4. You will see four icons. (Movies, music, photo and other files)
5. If you want to watch a movie that you have copied to the hdMEDIA, select the film reel icon and press 'Enter'.
6. Choose the folder 'Video' and press 'Enter'.
7. Movies on you hard disk will be displayed in the media library.
8. Select the movie you want to watch and press 'Enter'.
9. The movie will be played after a few seconds.

Use the same steps, but a different icon to play music or view your photos.

9.4 Share media with another hdMEDIA player

The hdMEDIA has a built-in UPnP media server. This means, that it can share the media on its internal hard drive with other UPnP devices. So, for example, you can set up another hdMEDIA in a different room in your house, and it can seamlessly access the files on the 'main' hdMEDIA. In this setup, you do not even need to place a hard drive into the second hdMEDIA! To enable the built-in UPnP media server, follow the steps below.

On the main unit with a hard drive the NMT applications are installed:

1. Use the arrow keys on the remote control to navigate to 'Setup'
2. If you selected 'Setup', push 'Enter'. You will now see the setup screen.
3. Navigate to the option 'NMT Applications' and push 'Enter'.
4. Navigate to the 'Start' button for the UPnP server option.
5. Push the 'Enter' key to start the selected option. Starting an option will take a few seconds, and then switch the state to 'Enabled'.
6. Use the 'Home' key to exit the menu.

On the secondary unit with no hard drive:

1. Wait about 30 seconds the UPnP server to be fully started.
2. Use the remote control to navigate to 'Media source' and press the 'Enter' button.
3. The UPnP server will be visible in the list of media sources.

You can now browse the UPnP server in the same way you would browse an internal hard drive, and play your media.

10.0 Web services

You can use the hdMEDIA to watch internet movies, television shows, listen to online music and download media using the built-in Transmission module. These Web Services or 'Media Portals' are a part of the software that you have installed in chapter 6.3. The most frequently used options will be discussed in the following chapter.

10.1 Watch movies or listen to music online

You can use the hdMEDIA to watch video's on YouTube or Metacafe, but also online features of networks like CNN. Follow the steps below to watch a video:

1. Make sure that your television and hdMEDIA are turned on, and that you see the menu of your hdMEDIA on your television screen.
2. Use the remote control to navigate to 'Web Services' and press the 'Enter' button.
3. A number of options is displayed in the field on the right side of the screen, like 'Media Service Portal'. The 'Transmission' option will be discussed in chapter 10.3.

4. To watch a YouTube video, select the 'Media Service Portal' and press 'Enter'.
5. A large number of channels will be displayed.
6. To display only video channels, you press '1' on your remote control.
7. Select the YouTube logo and press 'Enter'.
8. Navigate to 'Search' and press 'Enter'.
9. Use the alphanumeric buttons on the remote control to enter something that you want the hdMEDIA to search, then navigate to the button next to the search box and press 'Enter'.
10. The results of your search attempt will be displayed. If you want to watch one of these video's, you can select it and press the 'Enter' button. The video will be played full-screen.
11. To stop playback, you can press the 'Stop' button on the remote control. You will return to the result of your searching.

Many channels are available where videos are offered for playback. You can choose other channels than 'Media Service Portal' in the 'Web Services' menu. Each of them offers a range of channels with a lot of media. The portal is constantly renewed with new media and services, with up-to-date content.

The hdMEDIA allows you not only to watch movies online, but also to listen to music.

1. First press the 'Home' button on your remote control. (Or click the blue MSP icon in the top of the screen to return to the MSP menu.)
2. Use the remote control to navigate to 'Web Services' and press the 'Enter' button.
3. A number of options is displayed in the field on the right side of the screen, like 'Media Service Portal'.
4. To listen to an online radio station, select the 'Media Service Portal' and press 'A' a large number of channels will be displayed.
5. Now you will see a great variety of channels.
6. To display only video channels, press '2' on your remote control.
7. Choose for instance 'Live365.com' and press 'Enter'.
8. Choose a genre and press 'Enter'.
9. A list of available radio stations will be displayed. Choose a station and press 'Enter' to listen to it.
10. To stop playback, you can press the 'Stop' button on the remote control. You will return to the list of radio stations.

Many radio stations are available online. You can choose other stations than 'Media Service Portal' in the 'Web Services' menu. Each of the portals offers a range of stations with a lot of radio content and channels. These portals are constantly renewed with new media and services, with up-to-date content.

10.2 The Transmission module

Note: Internet Explorer is not supported by Transmission. Use Mozilla Firefox, Safari or Opera while using Transmission. Firefox can be downloaded from www.mozilla.com.

The NMT software you have installed in chapter 6.3, contains a Transmission Module. With this module, you can download movies, music and other media without the need of having your computer turned on. It's all done on the hdMEDIA itself!

Before you can use the Transmission module you have to make some settings on the hdMEDIA itself. We will explain how to setup the hdMEDIA and how to use the Transmission module.

10.2.1 Configuration

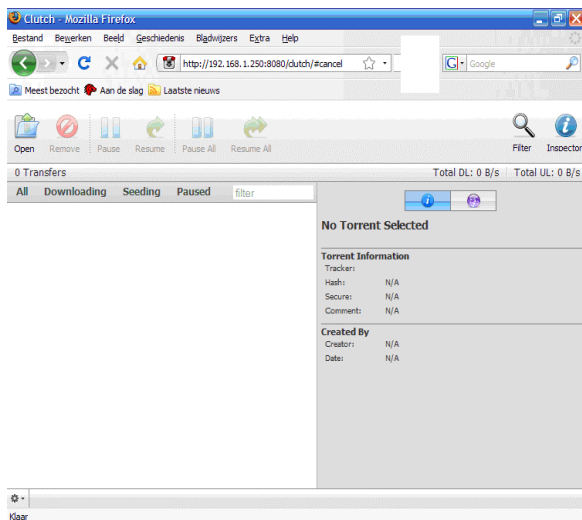
1. Make sure that your television and hdMEDIA are turned on, and that you see the menu of your hdMEDIA on your television screen.
2. Use the remote control to navigate to 'Setup' and press the 'Enter' button.
3. Select 'NMT Applications' in the left menu and press 'Enter'.
4. The last option displayed is 'Transmission'. If this service is stopped, you can select the 'Start' button and press 'Enter'.

Note: Although Transmission uses UPnP, it is possible that you have to open the specific port manually on your router or modem. How to accomplish this can be read in the manual of the device. You can also contact the manufacturer of your device for support.

10.2.2 Using the Transmission module

Now that you have correctly configured your hdMEDIA, you can upload a torrent file to the Transmission module of your hdMEDIA to start downloading. Follow the steps below to start using the Transmission module of your hdMEDIA.

1. Open your Internet browser, e.g. Internet Explorer or Mozilla Firefox.
2. Clear the address bar and type in 'http://', followed by the IP address that you have assigned to the hdMEDIA in chapter 6.2. Add ':8077' after the IP address (e.g. <http://192.168.1.100:8077>).
3. Press 'Enter'.
4. Log in with username 'nmt' and password '1234'.
5. Now you will see the following screen:



6. Click 'Open'.
7. Click 'Browse' to browse your computer and select the desired file.
8. Click 'Upload' to start downloading.
9. Downloaded files will be placed in the main directory 'Download'.

Left at the bottom of the screen you can see a little 'sprocket'. Click this sprocket to go to the settings page of Transmission. Here you can alter settings like your maximum download speed. There is no limit to this download speed by default, so your network and internet connection may experience a sluggish performance. For this reason we recommend you to set a maximum to this download speed.

An other way to start a download with a torrent file:

1. Use Windows Explorer (cf. chapter 7.3) to copy a torrent file into the 'Download' folder of the hdMEDIA.
2. Use the remote control to navigate to 'Media source'; and press the 'Enter' button.
3. Choose 'HARD_DISK' and press 'Enter'
4. You will see four icons. (Movies, music, photo and other files)
5. Open the fourth (last) icon.
6. Your torrent file is listed here. Select it and press 'Enter'.
7. Choose 'Yes' to start downloading.

After downloading is finished, you can find the completed file in the 'Download' folder on the hard disk of the hdMEDIA. Choose 'Media Source' on the main menu of the hdMEDIA, open 'HARD_DISK', select one of the four icons (e.g. if you downloaded a

movie, select the film reel icon) and open it. Then choose the 'Download' folder and open it.

10.3 Usenet module

The hdMEDIA has a built-in Usenet newsgroup download function (NZBget). This allows you to download files from newsgroups quickly and easily. The hdMEDIA uses PAR to check for broken files, and repairs them if needed. When done downloading, the files will be extracted (RAR) automatically. There is no need to keep your pc running. Downloading was never so easy!

10.3.1 Configuring the Usenet module

Before you can start downloading with NZBget, you will need to configure a few settings in the hdMEDIA 'share' folder. You will need your provider details such as newsserver, username and login (if used). Follow the steps below to configure NZBget:

1. Click 'Start'.
2. Click 'Run'.
3. Enter the IP address of your hdMEDIA preceeded by \\, for example \\192.168.1.25
4. Enter nmt as username, and 1234 as password, and click 'ok'.
5. Double-click the folder 'Share'.
6. You will see several folders.
7. The NZBGET folder is a hidden folder. We will need to enable 'hidden files and directories' in order to see it.
8. In the explore-window click 'Tools', then 'File Options'.
9. Click 'View'.
10. Now scroll down the entire list and click 'Show hidden files and folders'.
11. Click 'OK'.
12. Now the '.NZBGET' folder has become visible.
13. Double-click this folder to open it.
14. Select the 'nzbget.conf' file with the right mouse button.
15. Now choose 'open', choose 'Select the program from a list' and click 'OK'.
16. Choose Wordpad from the list, uncheck the box 'always use this program to open this file type' and click 'OK'.
17. The file will now be opened.
18. Go to 'News-Servers', then go to 'server1.host='.
19. Fill in the name of your News Server.
20. Then go to 'server1.username' and fill in the username needed for your News Server.
21. Then go to 'server1.password' and fill in the password needed for your News Server.
22. Now close the file and save the altered settings.

Note! If you are not sure about the name of your News Server or Username and Password, the required data is known by your ISP (Internet Service Provider).

Note! If you are using a News Server without a Username and Password, make sure you do not fill in anything behind 'server1.username and server1.password'. If there are any dots present, remove them!

Now the new settings have been saved we have to configure the hdMEDIA so that the new settings can be used. Use the following steps. Pay attention: These settings have to be done on the hdMEDIA using the television.

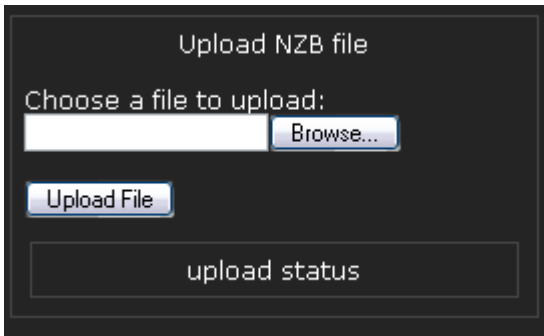
1. Open the menu of the hdMEDIA by pressing down the 'Setup' button.
2. Go to 'NMT programs'.
3. Press the 'Enter' button.
4. Go to 'Usenet Client'.
5. Stop 'Usenet Client' by pressing down the 'Stop' button in the menu and wait for about 5 seconds.
6. Start 'Usenet Client' by pressing down the 'Start' button in the menu.

The hdMEDIA is now ready to use the NZBGET function.

10.3.2 Using the Usenet module

Now that the hdMEDIA has been setup to make use of the NZB function, you can start to download. Use the following steps to start:

1. Search on your Newsgroup for NZB files and download these to your hard disk.
2. Using your computer, open the logon page of the hdMEDIA.
For example: <http://192.168.1.25:8066>
(This is the hdMEDIA IP-address followed by: 8066)
3. Enter 'nmt' as username and '1234' as password
4. The NZBget web interface appears on your screen.



5. Click 'Browse'.
6. Browse to the NZB file you have downloaded from your Newsgroup and select it. This file will be recognized as a .NZB file.
7. Click 'Upload File'.
8. It could take a minute, however, on the right side of the screen the name of your download will appear. Refresh your screen if necessary.
9. You can also view the status of your download on the right side of the screen.
10. As soon the file has been downloaded and extracted, the hdMEDIA is able to play it.

Downloaded files will be placed in the 'Download' folder just like the downloaded 'Torrent Files'. PAR repairs will only be done if PAR files are available for download.

Hint! NZB files can be found on the Web too, use Google to search for "NZB Index". There are many websites that offer complete indexing services of newsgroups.

Note: Downloading may be subject to your local laws, Eminent does not encourage or support downloading of copyrighted material.

11.0 Using the compact media server

A small media server is available to you on the enclosed CD-rom. This program enables you to change your computer into a media server. You can play music, video files and watch photos on your network without copying the files to the hdMEDIA.

11.1 Software installation

1. Place the enclosed CD-rom in the CD-rom player or DVD-rom player of your computer. The CD-rom will start automatically.
2. Choose 'English'.
3. Click 'Next'.
4. Select 'Install Media server'.

5. Click 'Next'.
6. Choose 'English'.
7. Click 'Next'.
8. Select 'I accept the agreement'.
9. Click 'Next'.
10. Click 'Next'.
11. Click 'Next'.
12. Click 'Next'.
13. Click 'Next'.
14. Click 'Finish', 'myiHome' will start automatically.
15. A firewall or antivirus program can report that this software is trying to connect to the internet. Choose 'Allow', or change the settings manually in your security software.

11.2 Media server setup

If the software has not been opened automatically, you can open the software manually by going to 'Start', 'Programs', 'myiHome' and click on 'myiHome'. You will see the window as shown below.



The media server is using a few default folders from your 'My Documents' folder. The folders 'My Music', 'My Video' and 'My Pictures'.

If these folders contain files you can see this by selecting one of the categories. If you did not use these folders you can add/move files to these folders.

It is not necessary to move all your videos, music and photos to these folders. You can also change the default folder settings of the media server.

1. Click 'Edit'.

2. Click 'Preferences'.
3. Choose a category, for example 'Video'.
4. Click 'Browse' and select your own video folder, for example 'D:\Video'.
5. Click 'OK'.

You can also follow these instructions for your music files and photos. Choose a different category at the third step.

11.3 Selecting your computer as a media source

Now that your computer is available as a media server, you can play the files from your computer on the hdMEDIA.

1. Make sure that your television and hdMEDIA are turned on, and that you see the menu of your hdMEDIA on your television screen.
2. Use the remote control to navigate to 'Media source; and press the 'Enter' button.
3. Choose your computer and press 'Enter'
4. You will see a few icons (movies, music, and photo)
5. If you want to watch a movie that you have copied to the hdMEDIA, you select the film reel icon and press 'Enter'.
6. A list of movies on your hard disk will be displayed.
7. Select the movie you want to watch and press 'Enter'
8. The movie will be played after a few seconds.

Use the same steps, but a different icon to play music or view your photos.

12.0 Frequently asked questions

Q. The hard disk in the housing is not detected.

A. Check the connection of the disk inside the housing. Reconnect it if necessary.

Q. How do I reset the hdMEDIA?

A. You can reset the hdMEDIA using the remote control. Press and hold the 'Power' button and 'USB DVD-ROM Eject' button at the same time.

Q. Is there another way to turn off the hdMEDIA besides using the remote control?

A. You can also turn off the hdMEDIA by using the 'POWER' button. Switch the power button to the '0' position to completely turn off the hdMEDIA.

Q. Which file systems are supported by the hdMEDIA ?

A. For read-only: EXT2/3, NTFS, FAT16/32 and HFS+.
For read-write purposes: EXT 2/3 and FAT 16/32 (recommended).

Q. What HDMI version uses the hdMEDIA?

A. The hdMEDIA uses the latest HDMI 1.3 connection.

Q. Does the hdMEDIA support subtitles ?

A. The hdMEDIA supports SRT, SMI, SUB and SSA subtitles files. These can be downloaded from the internet, and need to be placed in the same folder as your video file. They also need to be renamed to match the video file. For example 'StarWarsEpisode3-DVD.avi', will have a subtitle file called 'StarWarsEpisode3-DVD.srt' (if the subtitles are in SRT format).

Q. Does the hdMEDIA support DVD's ?

A. Yes. DVD's can be played completely from ISO file format, with all the menu's and options as you would expect.

Q. Which media formats are supported by the hdMEDIA ?

A. The following formats are supported: **Video:** MPEG 1/2/4 (M1V, M2v, M4V, M2P, MPG) MPEG-2 Transport Stream (TS, TP, TRP, M2T, M2TS, MTS). VOB, AVI, ASF WMV, Matroska (MKV container), MOV (H.264), MP4, RMP4. **Audio:** AAC, M4A, MP1, MP2, MP3, MPA, WAV and WMA.

Q. Which codecs are supported by the hdMEDIA ?

A. The following codecs are supported: **Video:** XviD (SD/HD), MPEG-1, MPEG-1/2(MP@HL), MPEG-4.2 (ASP@L5, 720P, 1Pt. GMC) WMV9 (MP@HL), H.264 (BP@L3, MP@L4.0, HP@L4.0 & L4.1), VC-1 (MP@HL, AP@L3). **Audio:** WMA, WMA Pro, AAC, MP1/2/3, LPCM. Other formats: JPEG, BMP, PNG, GIF, ISO, IFO, SRT, SMI, SUB and SSA. DTS, DTS-HD and Dolby TrueHD

** Future codecs and formats may be available by firmware update.*

Q. My computer is not listed as a media source?

A. Check the installation and settings as described in chapter 11. Note that an antivirus program and/or firewall can block the network connection. You need to open port 8000 (by default) for the program to be able to be visible in your network. Change the settings of your security settings if you do not see your computer in the list of media sources.

Q. How can I start and control a slideshow?

A. Open the folder with the pictures you want to view. Select a picture and push the 'Play' button to start the slideshow. You can navigate with the buttons 'Prev' and 'Next'. Push 'Pause' if you want to view a picture for a while.

Q. Does the hdMEDIA also support wireless networks?

A. The hdMEDIA can support Atheros 300N USB Wireless adapters. However, even though the speed and range of modern day wireless devices is greatly improved, high-definition video requires a lot of bandwidth. We have only successfully tested this USB device with standard definition video under optimal conditions. If

you wish to use the wireless functions, you will need to purchase an “Atheros AR9001U-2NG USB 11n WiFi” stick. The supported chipset is ZD1221. Performance may vary depending on your wireless environment.

13.0 Service and Support

This users manual has been carefully written by Eminent’s technical experts.

If you have problems installing or using the product, please fill out the support form at the website www.eminent-online.com/support.

Declaration of Conformity

To ensure your safety and compliance of the product with the directives and laws created by the European Commission you can obtain a copy of the Declaration of Conformity concerning your product by sending an e-mail message to: info@eminent-online.com. You can also send a letter to:

Eminent Computer Supplies
P.O. Box 276
6160 AG Geleen
The Netherlands

Clearly state 'Declaration of Conformity' and the article code of the product of which you would like to obtain a copy of the Declaration of Conformity.



Trademarks: all brand names are trademarks and/or registered trademarks of their respective holders.

The information contained in this document has been created with the utmost care. No legal rights can be derived from these contents. Eminent cannot be held responsible, nor liable for the information contained in this document.



Eminent is a member of the Intronic Group