



MANUAL

## EM7041 - 2.5" Harddisk Enclosure SATA

[WWW.EMINENT-ONLINE.COM](http://WWW.EMINENT-ONLINE.COM)

# EM7041 - 2.5" Harddisk Enclosure SATA



## Warnings and points of attention

Repairing of the product should be done by qualified Eminent staff

## Table of contents

1.0 Warranty conditions .....	2
2.0 Introduction .....	3
2.1 Functions and features .....	3
2.2 Packing contents .....	3
3.0 Installation procedure .....	3
3.1 Installing a hard disk .....	3
3.2 Installing drivers .....	4
3.2.1 Windows ME/2000/XP/Vista and Mac OS X .....	4
3.2.2 Windows 98SE .....	5
3.3 Preparing your hard disk for usage .....	5
3.3.1 Windows 98SE/ME .....	5
3.3.2 Windows 2000/ XP/Vista .....	6
3.3.3 Mac OS X .....	6
4.0 Using the EM7041 .....	7
4.1 Windows 98SE/ME .....	7
4.2 Windows 2000/XP/Vista .....	7
4.3 Mac OS X .....	7
5.0 Frequently asked questions .....	7
6.0 Service and Support .....	8

## 1.0 Warranty conditions

The five-year Eminent warranty applies to all Eminent products unless mentioned otherwise before or during the moment of purchase. When having bought a second-hand Eminent product the remaining period of warranty is measured from the moment of purchase by the product's first owner. The Eminent warranty applies to all Eminent products and parts inextricably connected to and/or mounted on the main product. Power supply adapters, batteries, antennas and all other products not integrated in or directly connected to the main product and/or products of which, without reasonable doubt, can be assumed that wear and tear show a different pattern than the main product are not covered by the Eminent warranty. Products are not covered by the Eminent warranty when subjected to incorrect/improper use, external influences and/or when opened by parties other than Eminent.

## 2.0 Introduction

Congratulations with the purchase of this high-quality Eminent product! This product has undergone extensive testing by Eminent's technical experts. Should you experience any problems with this product, you are covered by a five-year Eminent warranty. Please keep this manual and the receipt in a safe place.

*Register your purchase now on [www.eminent-online.com](http://www.eminent-online.com) and receive product updates!*

### 2.1 Functions and features

The Eminent 2,5" SATA Hard Disk Enclosure enables you make backups or copy data at high speeds. The solid housing offers an excellent protection for your data. Because of the USB 2.0 connection you immediately profit from faster transfer speeds. Your hard disk can easily be mounted in to the housing, enabling you to use it anytime, anywhere.

### 2.2 Packing contents

The following parts need to be present in the packing:

- EM7041 Portable 2,5" SATA Hard Disk Enclosure.
- USB connection cable.
- Manual.
- Screw driver.
- Sleeve.

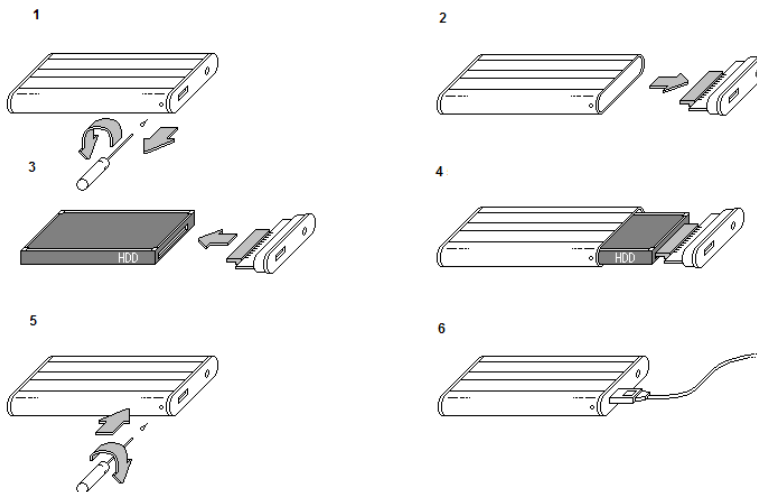
## 3.0 Installation procedure

This chapter explains how to connect and install the Hard Disk Enclosure.

*Note! We recommend you to make a backup of the data on the hard disk you wish to use. Eminent can not be held responsible for any loss of or damage to data resulting in the use of this device.*

### 3.1 Installing a hard disk

To be able to use your EM7041 you will first need to install a hard disk. Follow these steps to install a hard disk:



1. Use the supplied screw driver to unscrew the small screws on the sides of the enclosure.
2. Pull out the front panel of the enclosure.
3. Make sure the front panel and the hard disk are aligned. Connect the SATA plug on the front panel to the hard disk.
4. Slide the hard disk into the enclosure.
5. Use the small screws to fasten the front panel to the enclosure.
6. Connect the USB 2.0 cable to the enclosure. The hardware installation is now finished.

**Note!** You can not connect a power adapter to the EM7041. To make sure the enclosure receives enough power, you can connect the EM7041 to two USB ports on your computer using the supplied double USB cable. This way the EM7041 will receive more power then when you should use just one USB port.

## 3.2 Installing drivers

### 3.2.1 Windows ME/2000/XP/Vista and Mac OS X

When using Windows ME, 2000, XP, Vista and Mac OS X no additional driver is required. These operating systems have built-in drivers that enable the Hard Disk Enclosure to automatically be recognized when connected to the computer.

### 3.2.2 Windows 98SE

Windows 98SE does not have a built-in driver for the Hard Disk Enclosure. Follow the instructions below to install a driver for Windows.

1. Start your computer.
2. Download the EM7041 driver from the website <http://www.eminent-online.com>.
3. Shut down your computer.
4. Connect the EM7041 to a free USB port on your computer. If your computer has a USB2.0 port we recommend you to use it.
5. Start your computer.
6. Windows will recognize the EM7041. The wizard 'Found new hardware' will appear.
7. Click 'Next'.
8. Select 'Search for the best driver for your device (recommended)'.
9. Click 'Next'.
10. Select 'Specify a location'.
11. Select the folder containing the EM7041 driver.
12. Click 'Next'.
13. Windows will now find the best driver for the EM7041.
14. Follow the instructions on your screen to finish the installation procedure.
15. Restart your computer.

### 3.3 Preparing your hard disk for usage

*Note! The steps below are only necessary if you use a new hard disk.*

#### 3.3.1 Windows 98SE/ME

1. Click 'Start'.
2. Click 'Run'.
3. Enter 'Command' and click 'Ok'.
4. Enter 'FDISK' in the DOS window.
5. Press the 'Enter' key on your keyboard.
6. Press the 'J' key on your keyboard.
7. Press the 'Enter' key on your keyboard.
8. Select option '5'.
9. Select the disk you wish to partition.
10. Select option '1' (Setup a DOS or Logical partition).
11. Select option '1' again to create a primary partition.
12. Your computer will now check the integrity of the hard disk, proceed with the steps below after the check has finished.
13. Select the largest possible partition size.
14. Press "Esc" on your keyboard to terminate FDISK.

### 3.3.2 Windows 2000/ XP/Vista

1. Right click the 'My Computer' icon.
2. Click 'Manage'.
3. Select the option 'Disk Management' from the left side of the screen.
4. Right click the new hard disk.
5. Select 'Initialize'.
6. Click 'Ok'.
7. Right click the new hard disk.
8. Click 'New Partition'.
9. Click 'Next'.
10. Click 'Next'.
11. Click 'Next'.
12. Choose the desired partition size (Note: when using FAT32 the partition size is limited to 32GB).
13. Click 'Next'.
14. Select the drive letter you wish to assign to this partition (this is not required).
15. Click 'Next'.
16. Select the desired file system: FAT32 or NTFS. If you will only use the hard disk for Windows XP or Vista systems we recommend you to select the NTFS file system.
17. Enter a name for the new partition in the field 'Volume label'.
18. Check 'Quick format' and click 'Next'.
19. Click 'Next'.
20. Click 'Finish'.

### 3.3.3 Mac OS X

1. Open Finder in your Dock by clicking it.
2. Click 'Applications' in the left menu of the Finder.
3. Click the 'Utilities' folder in the right part of the Finder.
4. Click the 'Disk Utility' icon in the right part of the Finder.
5. Select the new USB disk in the left list of the Disk Utility.
6. Click the 'Partition' tab in the right part of the Disk Utility.
7. Select '1 partition' as the partitioning scheme.

*Note: If you will only use the hard disk for Mac OS systems, we recommend you choose 'Mac OS X Extended' as the file system. If you need to use the disk on both Mac and Windows systems, you can choose the 'FAT32' file system.*

8. Click the 'Partition' button to partition the disk.
9. After several minutes, the partitioning should be completed.
10. Your EM7041 is now ready for use.

## 4.0 Using the EM7041

This chapter explains how to start using the EM7041 in combination with several operating systems.

### 4.1 Windows 98SE/ME

You will need to plug in the EM7041 while the computer is switched off. After you have switched on your computer the drive and all partitions (FAT/FAT32) will be accessible through 'My Computer' or through Windows Explorer.

### 4.2 Windows 2000/XP/Vista

Normally you should be able to plug in your EM7041 when the computer is switched on. After you connect the EM7041, Windows will automatically find and install the drivers and all partitions will be available through 'My Computer' or through Windows Explorer.

### 4.3 Mac OS X

Normally you should be able to plug in your EM7041 when the Mac is switched on. After you connect the EM7041, OS X will automatically find and install the drivers. The extra partitions will be available through the new icon on the desktop.

## 5.0 Frequently asked questions

*Q: Can I use the FAT32 file system?*

*A: When using Windows 98SE/ME this is mandatory but please note that the maximum size of a file is 4GB.*

*Q: Can I connect my EM7041 to the computer when its powered on?*

*A: Yes, if you are using Windows 2000, XP, Vista or Mac OS X.*

*Q: Can I use this product when my computer is running Windows 95/NT?*

*A: Unfortunately not. The EM7041 can only operate using 98SE, ME, 2000, XP, Vista and Mac OS X.*

*Q: My hard disk does not appear in 'Disc Management'.*

*A: Verify that the USB ports on your computer are functioning properly and that the hard disk is connected properly to the enclosure.*

## 6.0 Service and Support

This users manual has been carefully written by Eminent's technical experts. If you have problems installing or using the product, please contact [support@eminent-online.com](mailto:support@eminent-online.com).



# Declaration of Conformity

To ensure your safety and compliance of the product with the directives and laws created by the European Commission you can obtain a copy of the Declaration of Conformity concerning your product by sending an e-mail message to: [info@eminent-online.com](mailto:info@eminent-online.com). You can also send a letter to:

Eminent Computer Supplies  
P.O. Box 276  
6160 AG Geleen  
The Netherlands

Clearly state 'Declaration of Conformity' and the article code of the product of which you would like to obtain a copy of the Declaration of Conformity.



Trademarks: all brand names are trademarks and/or registered trademarks of their respective holders.

The information contained in this document has been created with the utmost care. No legal rights can be derived from these contents. Eminent cannot be held responsible, nor liable for the information contained in this document.



Eminent is a member of the Intronic Group